

知 S3110收集诊断信息的方法 (WEB版)

产品特性 韦家宁 2020-04-10 发表

组网及说明

S3110交换机收集诊断信息的方法有两种，分别是网页版和命令行版，以下是网页版的收集方法：

S3110版本信息如下：

H3C Comware Platform Software

Comware Software, Version 5.20.99, Release 1106

Copyright (c) 2004-2015 Hangzhou H3C Tech. Co., Ltd. All rights reserved.

H3C S3110-26TP uptime is 0 week, 0 day, 7 hours, 36 minutes

H3C S3110-26TP

128M bytes DRAM

32M bytes Flash Memory

Config Register points to Flash

Hardware Version is REV.A

Bootrom Version is 110

[SubSlot 0] 24FE+2GE Combo Hardware Version is REV.A

配置步骤

S3110要先开启WEB功能，并创建相应用户和赋予权限，可参考如下配置。

```
[H3C]ip https enable
```

```
[H3C]ip http enable
```

```
[H3C]local-user admin
```

```
[H3C-luser-admin]password simple admin
```

```
[H3C-luser-admin]service-type web
```

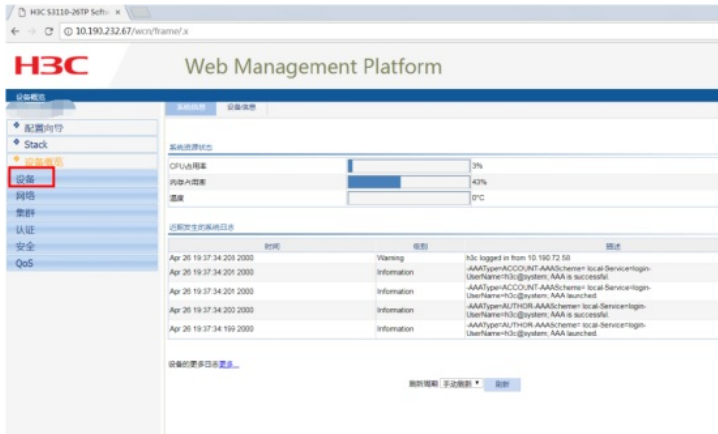
```
[H3C-luser-admin]authorization-attribute level 3
```

```
[H3C-luser-admin]quit
```

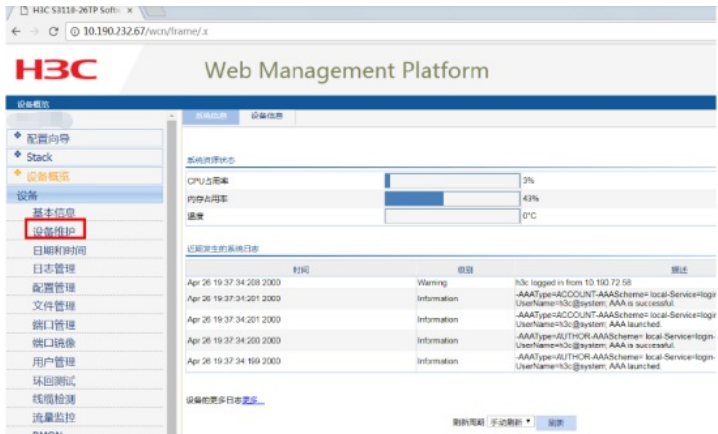
登录WEB界面：



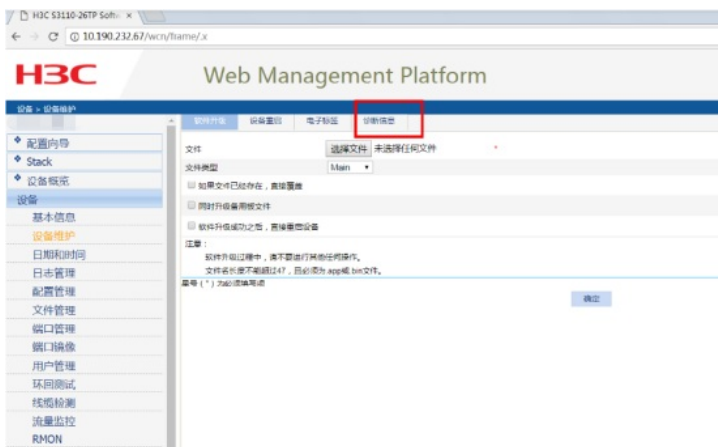
点击“设备”



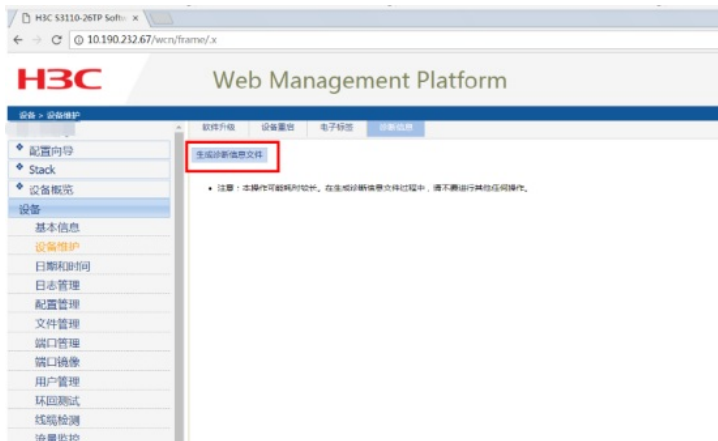
点击“设备维护”



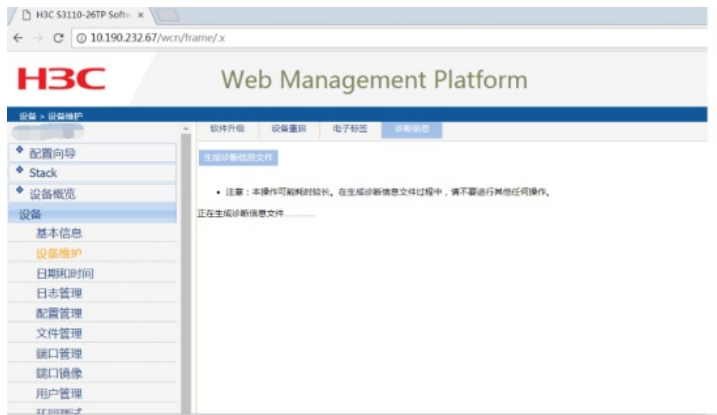
点击“诊断信息”



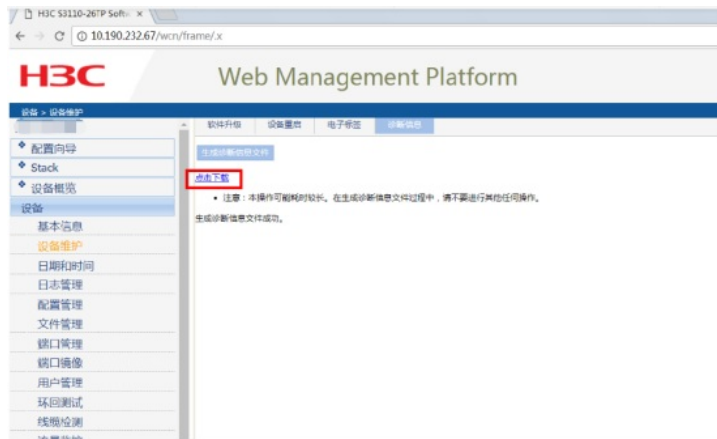
点击“生成诊断信息文件”



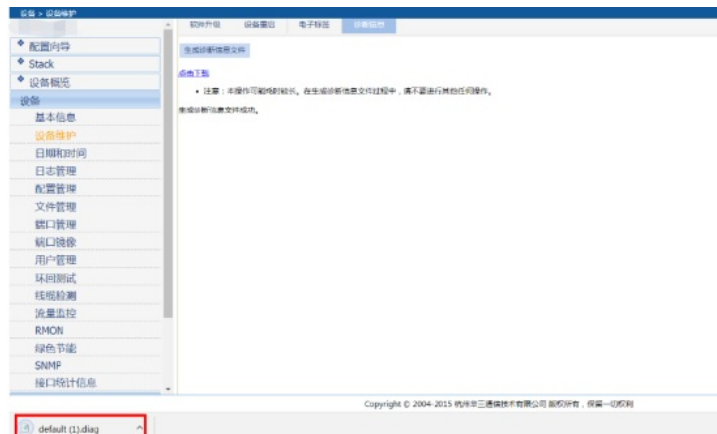
正在生成



生成完成，“点击下载”



下载完成



配置关键点