

## 组网及说明

### 1 配置需求或说明

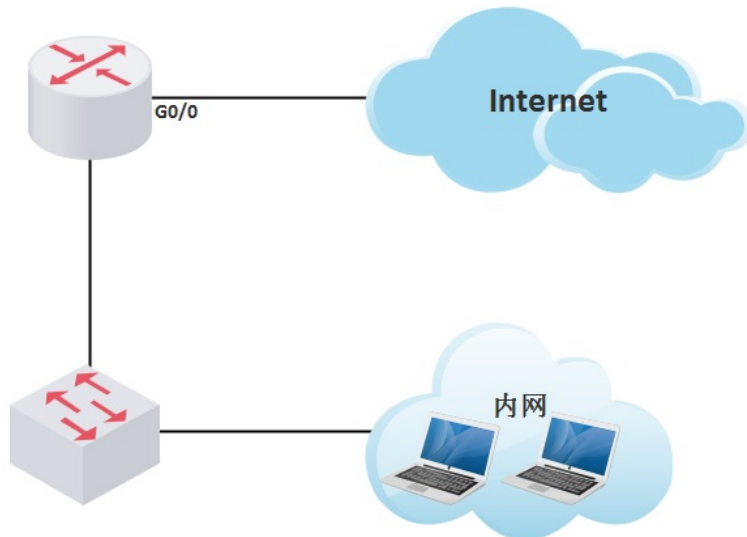
#### 1.1 适用产品系列

本案例适用于如MSR800、MSR830、MSR900、MSR900E、MSR930等MSR800、MSR830、MSR900、MSR930系列的路由器。

#### 1.2 配置需求及实现的效果

配置当MSR公网接口出现拥塞时，保证内网视频会议终端（IP：192.168.1.250）的相关流量优先转发。

### 2 组网图



## 配置步骤

### 3 配置步骤

#### 3.1 定义匹配的数据流

```
<H3C>system
```

System View: return to User View with Ctrl+Z.

```
[H3C]acl number 3970 //MSR V7路由器命令为acl advanced 3970
```

```
[H3C-acl-adv-3970]rule 0 permit ip source 192.168.0.250 0 //匹配感兴趣流源是内网服务器的ip地址
```

```
[H3C-acl-adv-3970]quit
```

#### 3.2 创建QOS类和流行为

```
[H3C]traffic classifier AdvWeb3970 //创建QOS类
```

```
[H3C-classifier-AdvWeb3970]if-match acl 3970
```

```
[H3C-classifier-AdvWeb3970]quit
```

```
[H3C]traffic behavior AdvWeb3970 //创建流行为
```

```
[H3C-behavior-AdvWeb3970]queue ef bandwidth 2048 //配置报文进入ef队列，最大带宽为2048kbps
```

```
[H3C-behavior-AdvWeb3970]quit
```

#### 3.3 创建QOS策略，绑定类和流行为

```
[H3C]qos policy PolicyLimit-1048576
```

```
[H3C-qospolicy-PolicyLimit-1048576]classifier AdvWeb3970 behavior AdvWeb3970
```

```
[H3C-qospolicy-PolicyLimit-1048576]quit
```

#### 3.4 将QOS策略应用到接口

```
[H3C]interface GigabitEthernet0/0
```

```
[H3C-GigabitEthernet0/0]qos apply policy PolicyLimit-1048576 outbound
```

```
[H3C]save force保存配置
```

## 配置关键点