

知 S5110本地端口镜像配置 (WEB版)

镜像 产品特性 韦家宁 2020-05-23 发表

组网及说明

本案例为S5110本地端口镜像配置，其中G1/0/27为源端口，G1/0/28为目的端口。

S5110版本信息如下：

H3C Comware Platform Software

Comware Software, Version 5.20.99, Release 1110

Copyright (c) 2004-2016 Hangzhou H3C Tech. Co., Ltd. All rights reserved.

H3C S5110-52P uptime is 7 weeks, 4 days, 4 hours, 6 minutes

H3C S5110-52P

128M bytes DRAM

32M bytes Flash Memory

Config Register points to Flash

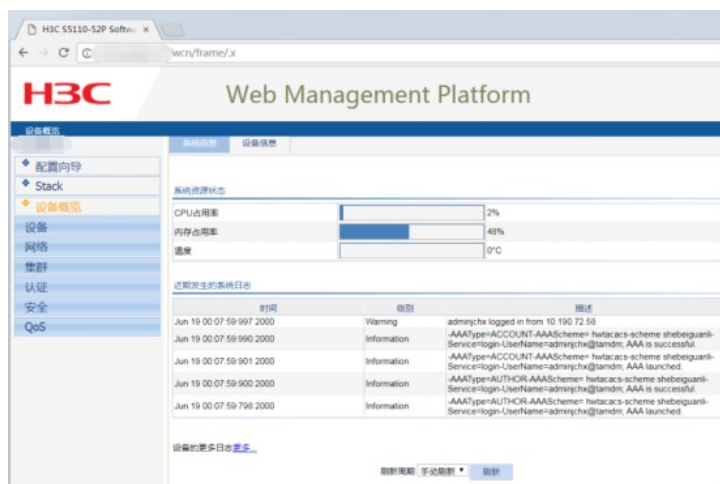
Hardware Version is REV.A

Bootrom Version is 111

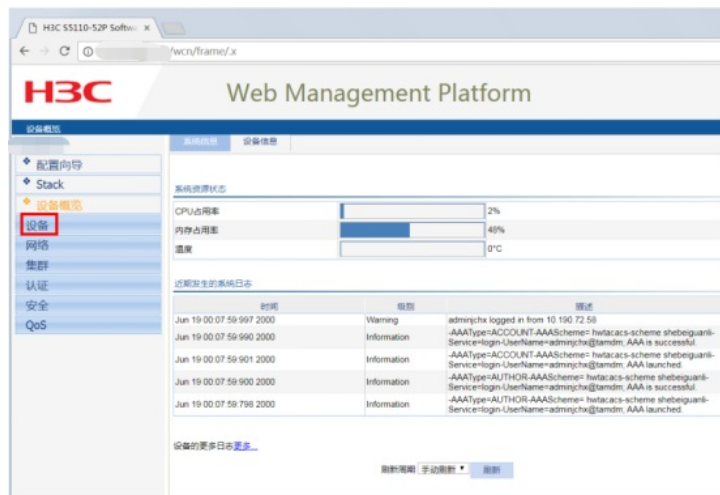
[SubSlot 0] 48GE+4SFP Hardware Version is REV.A

配置步骤

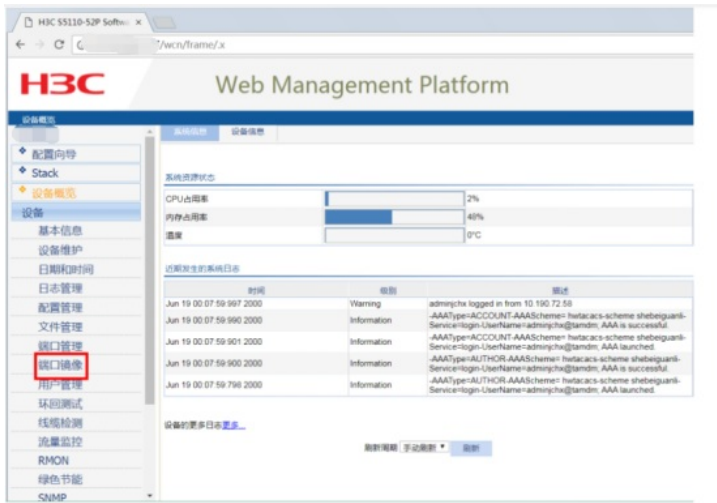
登录网页版：



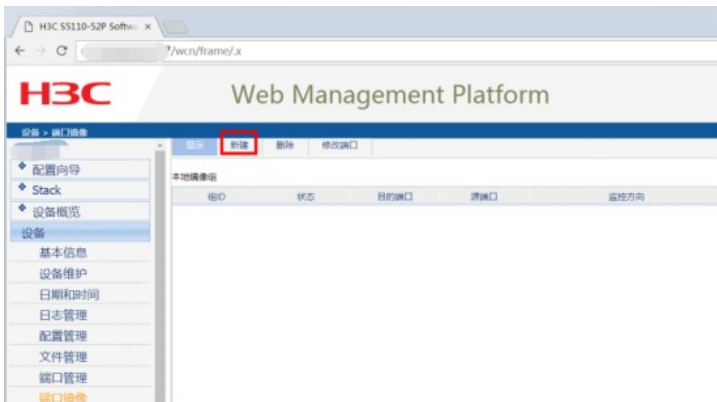
点击“设备”：



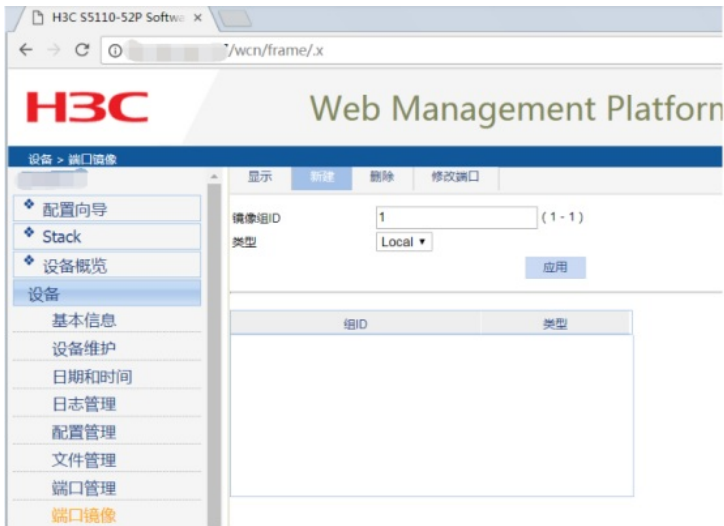
点击“端口镜像”：



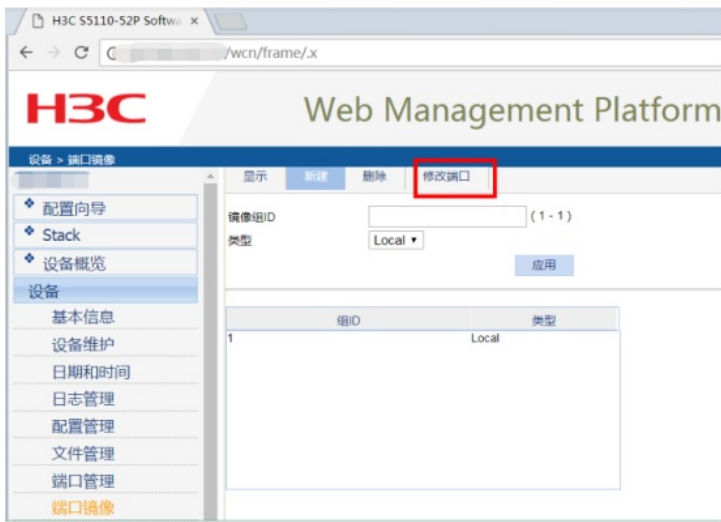
点击“新建”:



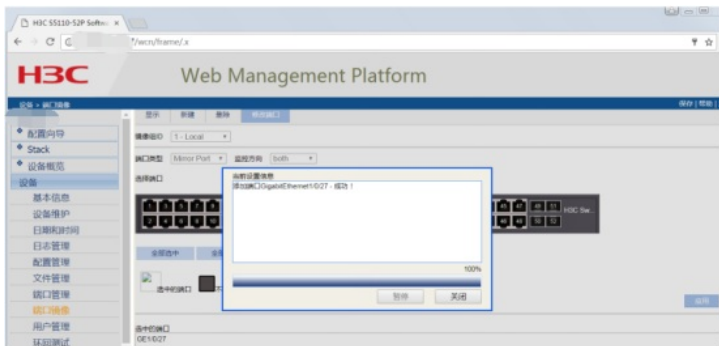
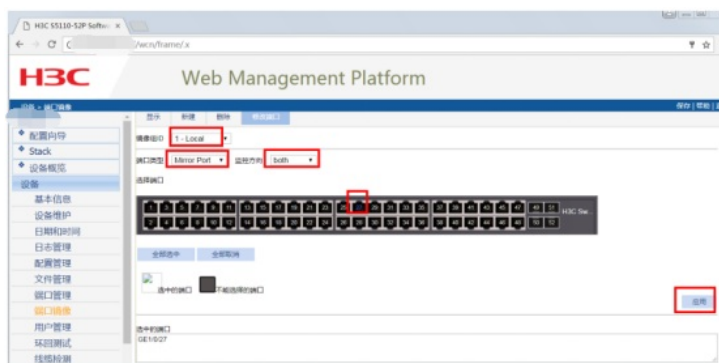
输入镜像组的ID, 点击“应用”:



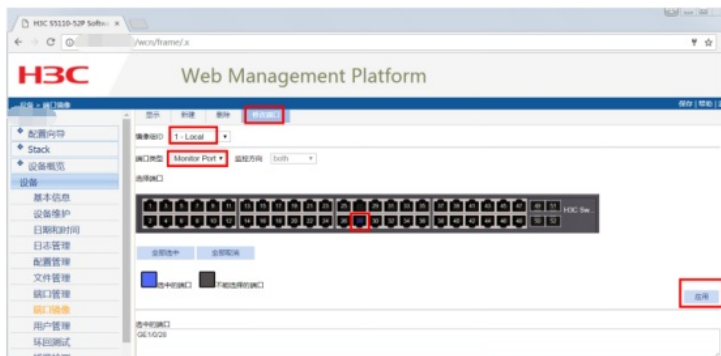
点击“修改端口”:

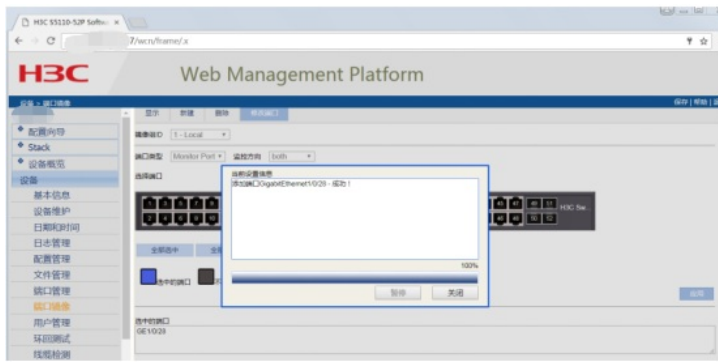


指定源端口：选择“镜像组ID”、选择端口类型为“Mirror port”，监控方向为“both”，在交换机面板选择“27”后点击应用，说明27口为镜像口。

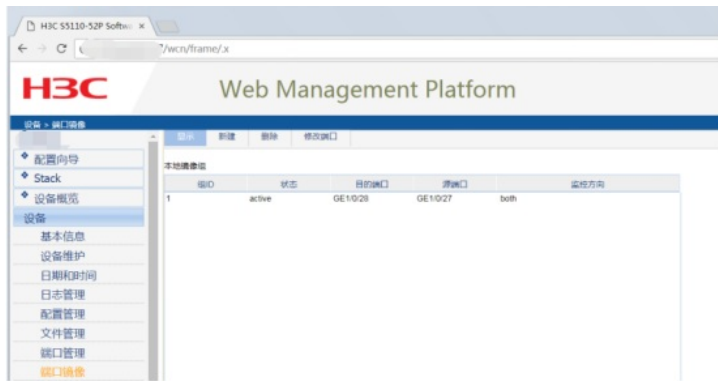


指定目的端口：选择“镜像组ID”、选择端口类型为“Monitor port”，在交换机面板选择“28”后点击应用，说明28口为目的端口。





配置完成：



至此，S5110本地镜像端口典型配置（WEB版）已完成！

配置关键点