

知 S5500本地端口镜像配置 (WEB版)

镜像 产品特性 韦家宁 2020-05-23 发表

组网及说明

本案例为S5500本地端口镜像配置，其中G1/0/27为源端口，G1/0/28为目的端口。

S5500版本信息如下：

H3C Comware Platform Software

Comware Software, Version 5.20, Release 2202

Copyright (c) 2004-2009 Hangzhou H3C Tech. Co., Ltd. All rights reserved.

H3C S5500-28F-EI uptime is 6 weeks, 3 days, 4 hours, 58 minutes

H3C S5500-28F-EI with 1 Processor

256M bytes SDRAM

32768K bytes Flash Memory

Hardware Version is REV.C

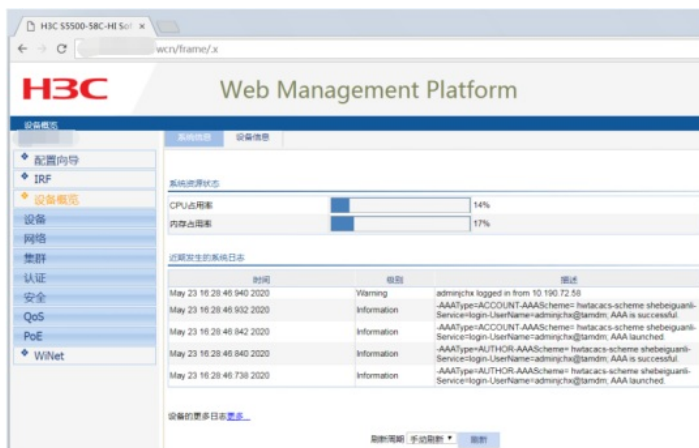
CPLD Version is 002

Bootrom Version is 509

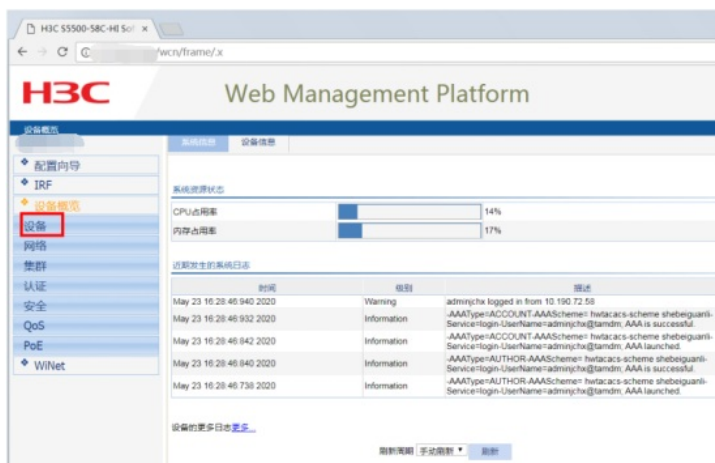
[SubSlot 0] 24SFP+8GE Hardware Version is REV.C

配置步骤

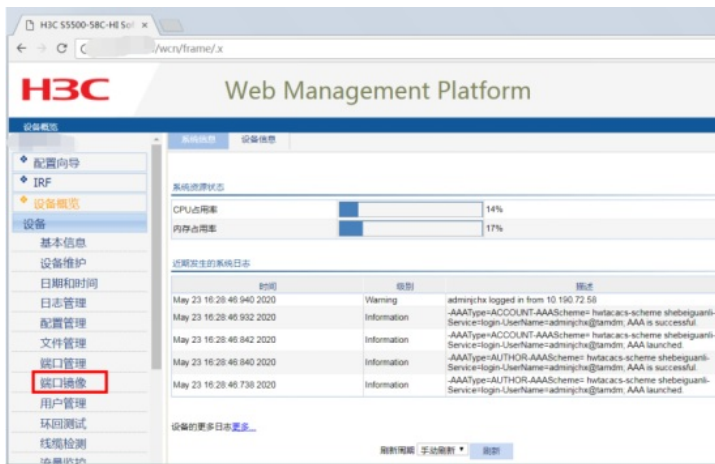
登录网页版：



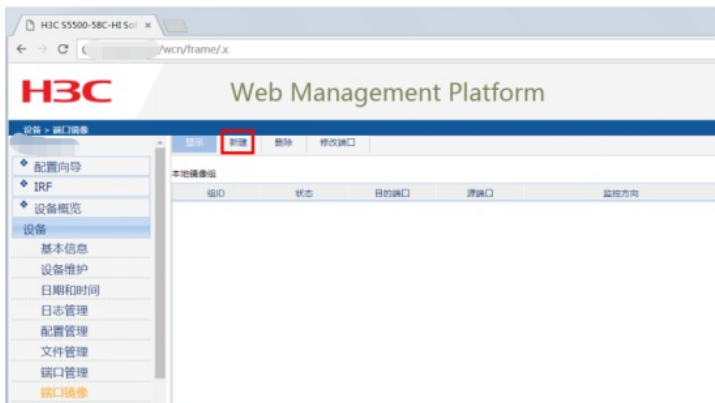
点击“设备”：



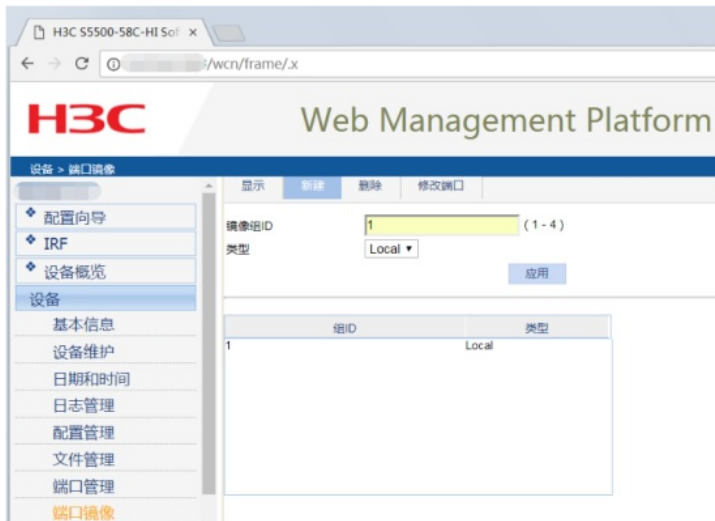
点击“端口镜像”：



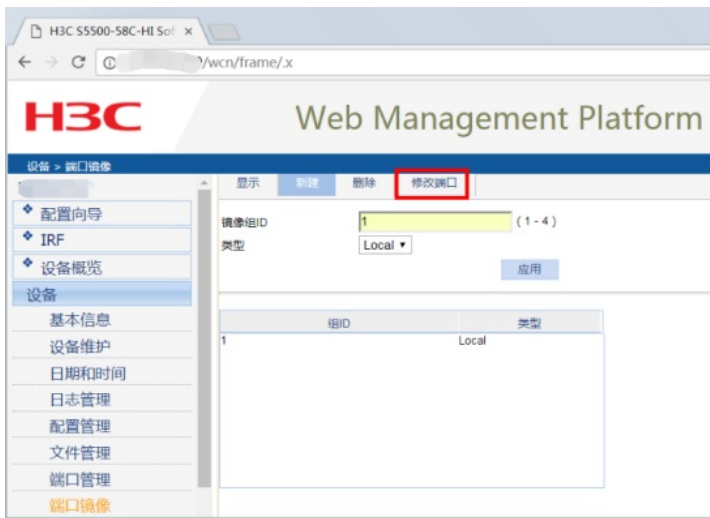
点击“新建”:



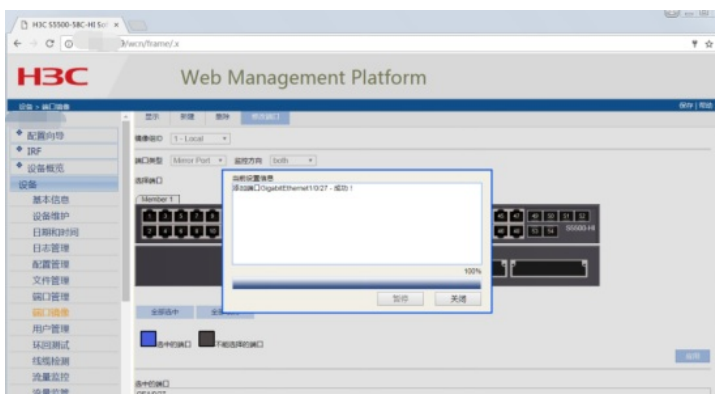
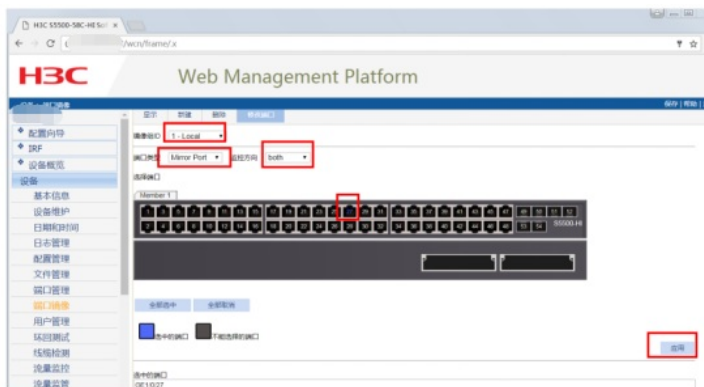
输入镜像组的ID, 点击“应用”:



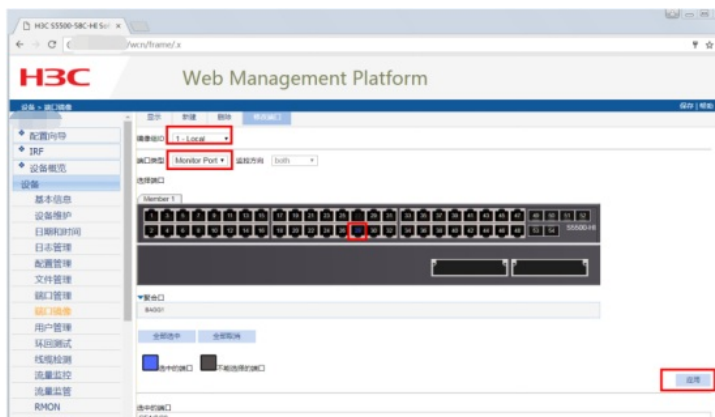
点击“修改端口”:

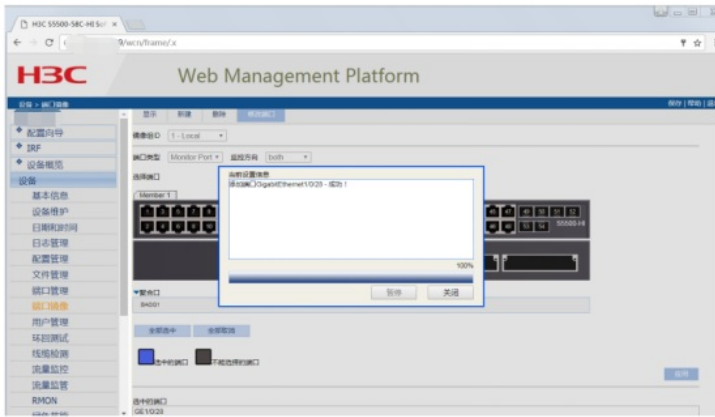


指定源端口：选择“镜像组ID”、选择端口类型为“Mirror port”，监控方向为“both”，在交换机面板选择“27”后点击应用，说明27口为镜像口。

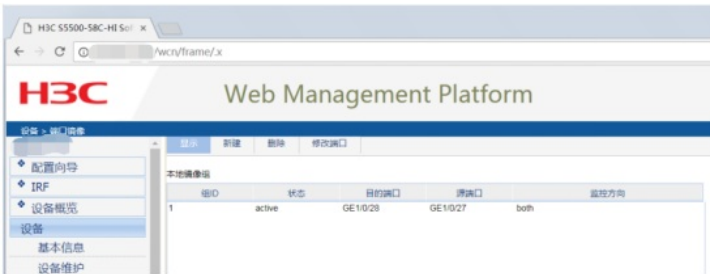


指定目的端口：选择“镜像组ID”、选择端口类型为“Monitor port”，在交换机面板选择“28”后点击应用，说明28口为目的端口。





配置完成:



至此，S5500本地端口镜像配置（WEB版）已完成！

配置关键点