

## 组网及说明

### 1 配置需求或说明

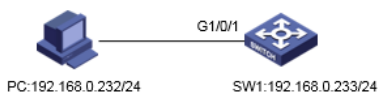
#### 1.1 适用产品系列

本案例适用于如S7006、S7503E、S7506E、S7606、S10510、S10508等S7000、S7500E、S10500系列，且软件版本是V5的交换机

#### 1.2 配置需求及实现的效果

将系统的日志信息发送到日志主机上保存，防止设备重启导致日志丢失

### 2 组网图



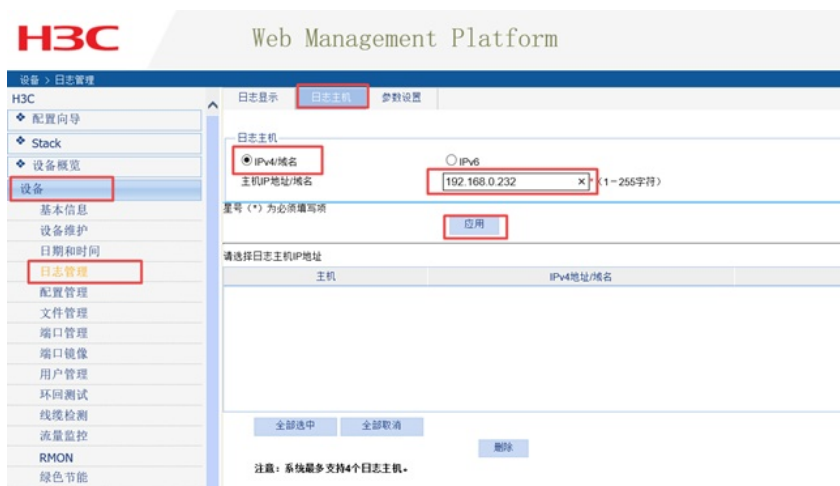
## 配置步骤

### 3 配置步骤

#### 3.1 配置日志主机

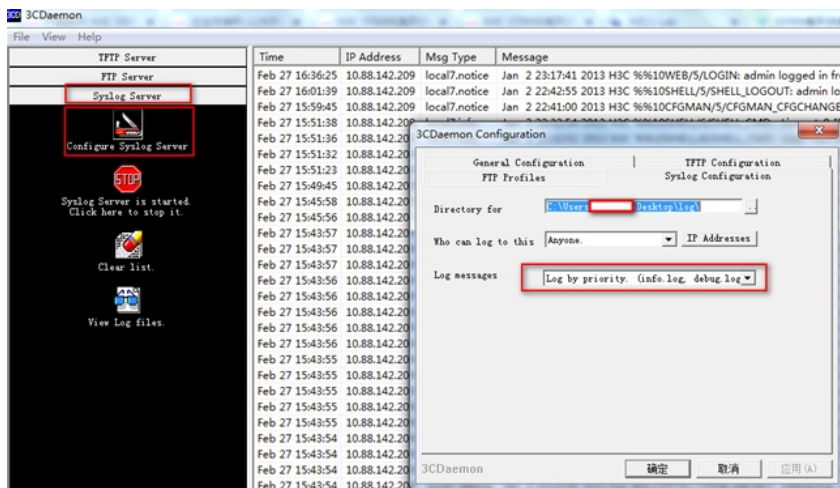
配置日志主机前需要保证日志主机设备和交换机之间网络可达

(1)在导航栏中选择“设备> 日志管理”



#### 3.2 日志服务器的配置

#在日志主机上安装并配置syslog server，这里应用3CDaemon软件为例，操作界面如下图所示，log messages可以根据priority、facility以及ip address将信息记录到不同的文档。



### 4 验证配置

#设备上的日志信息就会被记录下来保存到3CDaemon软件设置的路径：

Time	IP Address	Msg Type	Message
Feb 27 20:18:36	192.168.0.233	local7.info	Apr 26 12:15:00 2000 H3C %%10SHELL/6/SHELL_CMD(1): -Task=au0-IPAddr=""-User="": Command is dis th
Feb 27 20:18:18	192.168.0.233	local7.info	Apr 26 12:14:43 2000 H3C %%10PING/6/PING_LOG(1): 192.168.0.232 ping statistics: 5 packet(s) transmitted; 5 packet(s) received; packet
Feb 27 20:18:17	192.168.0.233	local7.info	Apr 26 12:14:41 2000 H3C %%10SHELL/6/SHELL_CMD(1): -Task=au0-IPAddr=""-User="": Command is ping 192.168.0.232
Feb 27 20:18:08	192.168.0.233	local7.info	Apr 26 12:14:31 2000 H3C %%10SHELL/6/SHELL_CMD(1): -Task=au0-IPAddr=""-User="": Command is dis th
Feb 27 20:18:03	192.168.0.233	local7.info	Apr 26 12:14:28 2000 H3C %%10SHELL/6/SHELL_CMD(1): -Task=au0-IPAddr=""-User="": Command is un info-center loghost 192.168.0.2
Feb 27 20:17:56	192.168.0.233	local7.info	Apr 26 12:14:20 2000 H3C %%10SHELL/6/SHELL_CMD(1): -Task=au0-IPAddr=""-User="": Command is dis th
Feb 27 20:17:51	192.168.0.233	local7.info	Apr 26 12:14:16 2000 H3C %%10SHELL/6/SHELL_CMD(1): -Task=au0-IPAddr=""-User="": Command is info-center loghost 192.168.0.232
Feb 27 20:12:29	local	user.info	Listening for Syslog messages on IP address: 192.168.0.232

#日志主机上会生成相应的日志文件:

名称	修改日期	类型	大小
alert.log	2019/2/27 20:06	Text Document	0 KB
crit.log	2019/2/27 20:06	Text Document	0 KB
debug.log	2019/2/27 20:06	Text Document	0 KB
emerg.log	2019/2/27 20:06	Text Document	0 KB
err.log	2019/2/27 20:06	Text Document	0 KB
error.log	2019/2/27 20:06	Text Document	0 KB
info.log	2019/2/27 20:12	Text Document	1 KB
none.log	2019/2/27 20:06	Text Document	0 KB
notice.log	2019/2/27 20:06	Text Document	0 KB
panic.log	2019/2/27 20:06	Text Document	0 KB
warn.log	2019/2/27 20:06	Text Document	0 KB
warning.log	2019/2/27 20:06	Text Document	0 KB

```

info.log - 记事本
文件(F) 编辑(E) 格式(O) 查看(V) 帮助(H)
Feb 27 20:06:49 local Listening for Syslog messages on IP address: 192.168.0.232
Feb 27 20:12:29 local Listening for Syslog messages on IP address: 192.168.0.232
Feb 27 20:17:51 192.168.0.233 Apr 26 12:14:16 2000 H3C %%10SHELL/6/SHELL_CMD(1): -Tasl
Feb 27 20:17:56 192.168.0.233 Apr 26 12:14:20 2000 H3C %%10SHELL/6/SHELL_CMD(1): -Tasl
Feb 27 20:18:03 192.168.0.233 Apr 26 12:14:28 2000 H3C %%10SHELL/6/SHELL_CMD(1): -Tasl
Feb 27 20:18:06 192.168.0.233 Apr 26 12:14:31 2000 H3C %%10SHELL/6/SHELL_CMD(1): -Tasl
Feb 27 20:18:17 192.168.0.233 Apr 26 12:14:41 2000 H3C %%10SHELL/6/SHELL_CMD(1): -Tasl
Feb 27 20:18:18 192.168.0.233 Apr 26 12:14:43 2000 H3C %%10PING/6/PING_LOG(1): 192.16
Feb 27 20:18:36 192.168.0.233 Apr 26 12:15:00 2000 H3C %%10SHELL/6/SHELL_CMD(1): -Tasl

```

配置关键点