

组网及说明

1 配置需求或说明

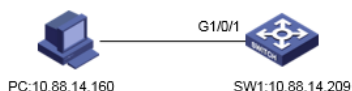
1.1 适用产品系列

本案例适用于如S3100V3-28TP-SI、S3100V3-28TP-EI、S3100V3-20TP-PWR-SI、S3100V3-28TP-PWR-EI等S3100V3系列的交换机。

1.2 配置需求及实现的效果

将系统的日志信息发送到日志主机上保存，防止设备重启导致日志丢失

2 组网图



配置步骤

3 配置步骤

配置日志主机前需要保证日志主机设备和交换机之间网络可达

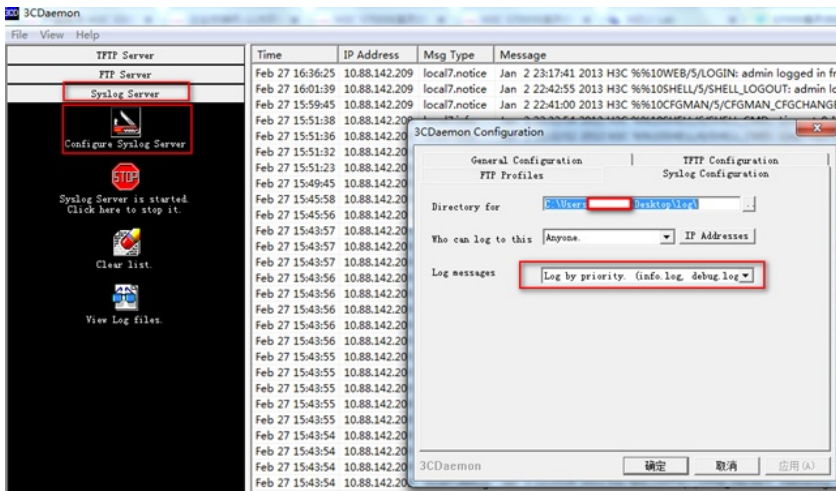
3.1 配置日志主机

点击日志——设置中配置日志主机地址



3.2 日志服务器的配置

#在日志主机上安装并配置syslog server，这里应用3CDaemon软件为例，操作界面如下图所示，log messages可以根据priority、facility以及ip address将信息记录到不同的文档。

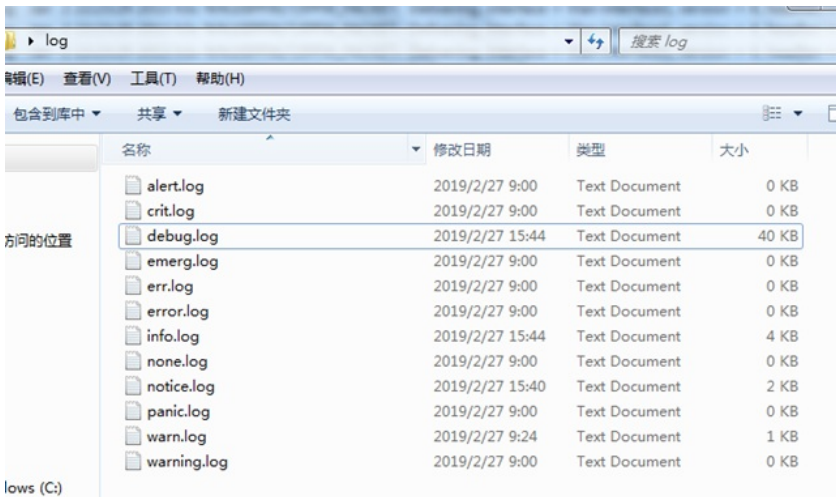


4 验证配置

#设备上的日志信息就会被记录下来保存到3C Daemon软件设置的路径:

| Time | IP Address | Msg Type | Message |
|-----------------|---------------|---------------|---|
| Feb 27 09:34:25 | 10.88.142.209 | local7.notice | Jan 2 16:15:39 2013 h3c %%10SHELL/5/SHELL_LOGOUT: admin logged out from 10.88.14.160. |
| Feb 27 09:29:46 | 10.88.142.209 | local7.notice | Jan 2 16:11:00 2013 h3c %%10CFGMAN/5/CFGMAN_CFGCHANGED: EventIndex=12,CommandSource=srmp-ConfigSox |
| Feb 27 09:24:23 | 10.88.142.209 | local7.info | Jan 2 16:05:37 2013 h3c %%10SHELL/5/SHELL_CMD: -Line-vty0-IPAddr=10.88.14.160-User=admin; Command is dis th |
| Feb 27 09:24:20 | 10.88.142.209 | local7.warn | Jan 2 16:05:35 2013 h3c %%10SHELL/4/SHELL_CMD_MATCHFAIL: -User=admin-IPAddr=10.88.14.160; Command dis t in |
| Feb 27 09:23:46 | 10.88.142.209 | local7.info | Jan 2 16:05:00 2013 h3c %%10SHELL/6/SHELL_CMD: -Line-vty0-IPAddr=10.88.14.160-User=admin; Command is info-c |
| Feb 27 09:22:59 | 10.88.142.209 | local7.info | Jan 2 16:04:13 2013 h3c %%10SHELL/6/SHELL_CMD: -Line-vty0-IPAddr=10.88.14.160-User=admin; Command is dis th |
| Feb 27 09:22:57 | 10.88.142.209 | local7.info | Jan 2 16:04:11 2013 h3c %%10SHELL/6/SHELL_CMD: -Line-vty0-IPAddr=10.88.14.160-User=admin; Command is info-c |
| Feb 27 09:14:51 | 10.88.142.209 | local7.info | Jan 2 15:56:06 2013 h3c %%10PING/6/PING_STATUS_INFO: Ping statistics for 10.88.14.160: 5 packet(s) transmitted, 5 pac |
| Feb 27 09:12:41 | 10.88.142.209 | local7.info | Jan 2 15:53:55 2013 h3c %%10PING/6/PING_STATUS_INFO: Ping statistics for 10.88.14.160: 5 packet(s) transmitted, 5 pac |
| Feb 27 09:00:16 | local | userinfo | Listening for Syslog messages on IP address: 10.88.14.160 |

#日志主机上会生成相应的日志文件:



| Time | IP Address | Msg Type | Message |
|-----------------|---------------|---------------|--|
| Feb 27 09:29:46 | 10.88.142.209 | local7.notice | Jan 2 16:11:00 2013 h3c %%10CFGMAN/5/CFGMAN_CFGCHANGED: EventIndex=12,CommandSource=srmp-ConfigSox |
| Feb 27 09:34:25 | 10.88.142.209 | local7.notice | Jan 2 16:15:39 2013 h3c %%10SHELL/5/SHELL_LOGOUT: admin logged out from 10.88.14.160. |
| Feb 27 09:48:04 | 10.88.142.209 | local7.notice | Jan 2 16:29:19 2013 h3c %%10SHELL/5/SHELL_LOGIN: admin logged in from 10.88.14.160. |
| Feb 27 09:49:46 | 10.88.142.209 | local7.notice | Jan 2 16:31:00 2013 h3c %%10CFGMAN/5/CFGMAN_CFGCHANGED: EventIndex=12,CommandSource=srmp-ConfigSox |
| Feb 27 09:59:31 | 10.88.142.209 | local7.notice | Jan 2 16:40:45 2013 h3c %%10SHELL/5/SHELL_LOGOUT: admin logged out from 10.88.14.160. |
| Feb 27 10:29:43 | 10.88.142.209 | local7.notice | Jan 2 17:10:58 2013 h3c %%10SHELL/5/SHELL_LOGIN: admin logged in from 10.88.14.160. |
| Feb 27 10:39:47 | 10.88.142.209 | local7.notice | Jan 2 17:21:02 2013 h3c %%10SHELL/5/SHELL_LOGOUT: admin logged out from 10.88.14.160. |
| Feb 27 13:52:23 | 10.88.142.209 | local7.notice | Jan 2 20:33:38 2013 h3c %%10WEB/5/LOGIN: admin logged in from 10.88.14.160. |
| Feb 27 14:02:43 | 10.88.142.209 | local7.notice | Jan 2 20:43:58 2013 h3c %%10WEB/5/LOGOUT: admin logged out from 10.88.14.160. |
| Feb 27 15:40:31 | 10.88.142.209 | local7.notice | Jan 2 22:21:46 2013 h3c %%10SHELL/5/SHELL_LOGIN: admin logged in from 10.88.14.160. |
| Feb 27 15:49:45 | 10.88.142.209 | local7.notice | Jan 2 22:31:00 2013 h3c %%10CFGMAN/5/CFGMAN_CFGCHANGED: EventIndex=12,CommandSource=srmp-ConfigSox |
| Feb 27 15:59:45 | 10.88.142.209 | local7.notice | Jan 2 22:41:00 2013 H3C %%10CFGMAN/5/CFGMAN_CFGCHANGED: EventIndex=12,CommandSource=srmp-ConfigSox |
| Feb 27 16:01:39 | 10.88.142.209 | local7.notice | Jan 2 22:42:55 2013 H3C %%10SHELL/5/SHELL_LOGOUT: admin logged out from 10.88.14.160. |
| Feb 27 16:36:25 | 10.88.142.209 | local7.notice | Jan 2 23:17:41 2013 H3C %%10WEB/5/LOGIN: admin logged in from 10.88.14.160. |
| Feb 27 16:46:35 | 10.88.142.209 | local7.notice | Jan 2 23:27:51 2013 H3C %%10WEB/5/LOGOUT: admin logged out from 10.88.14.160. |
| Feb 27 16:47:16 | 10.88.142.209 | local7.notice | Jan 2 23:28:32 2013 H3C %%10SHELL/5/SHELL_LOGIN: admin logged in from 10.88.14.160. |
| Feb 27 16:57:18 | 10.88.142.209 | local7.notice | Jan 2 23:38:33 2013 H3C %%10SHELL/5/SHELL_LOGOUT: admin logged out from 10.88.14.160. |
| Feb 27 16:59:22 | 10.88.142.209 | local7.notice | Jan 2 23:40:38 2013 H3C %%10SHELL/5/SHELL_LOGIN: admin logged in from 10.88.14.160. |
| Feb 27 17:09:47 | 10.88.142.209 | local7.notice | Jan 2 23:51:03 2013 H3C %%10SHELL/5/SHELL_LOGOUT: admin logged out from 10.88.14.160. |
| Feb 27 17:17:15 | 10.88.142.209 | local7.notice | Jan 2 23:58:31 2013 H3C %%10SHELL/5/SHELL_LOGIN: admin logged in from 10.88.14.160. |
| Feb 27 17:27:22 | 10.88.142.209 | local7.notice | Jan 3 00:08:38 2013 H3C %%10SHELL/5/SHELL_LOGOUT: admin logged out from 10.88.14.160. |
| Feb 27 17:47:32 | 10.88.142.209 | local7.notice | Jan 3 00:28:48 2013 H3C %%10WEB/5/LOGIN_FAILED: admin failed to log in from 10.88.14.160. |
| Feb 27 17:47:36 | 10.88.142.209 | local7.notice | Jan 3 00:28:52 2013 H3C %%10WEB/5/LOGIN: admin logged in from 10.88.14.160. |
| Feb 27 17:58:16 | 10.88.142.209 | local7.notice | Jan 3 00:39:32 2013 H3C %%10WEB/5/LOGOUT: admin logged out from 10.88.14.160. |
| Feb 27 18:26:44 | 10.88.142.209 | local7.notice | Jan 3 01:07:59 2013 H3C %%10WEB/5/LOGIN: admin logged in from 10.88.14.160. |
| Feb 27 18:32:43 | 10.88.142.209 | local7.notice | Jan 3 01:13:58 2013 H3C %%10SHELL/5/SHELL_LOGIN: admin logged in from 10.88.14.160. |
| Feb 27 18:35:36 | 10.88.142.209 | local7.notice | Jan 3 01:16:51 2013 H3C %%10SHELL/5/SHELL_LOGOUT: admin logged out from 10.88.14.160. |

配置关键点