

组网及说明

1 配置需求或说明

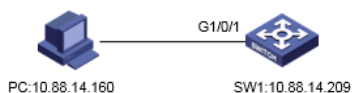
1.1 适用产品系列

本案例适用于如S5024PV3-EI-HPWR、S5048PV3-EI、S5120V2-52P-LI、S5120V2-28P-SI、S5130-52S-EI、S5130S-28S-EI、S5150X-16ST-EI等S5000PV3、S5120V2、S5130、S5150系列的交换机。

1.2 配置需求及实现的效果

将系统的日志信息发送到日志主机上保存，防止设备重启导致日志丢失

2 组网图



配置步骤

3 配置步骤

配置日志主机前需要保证日志主机设备和交换机之间网络可达

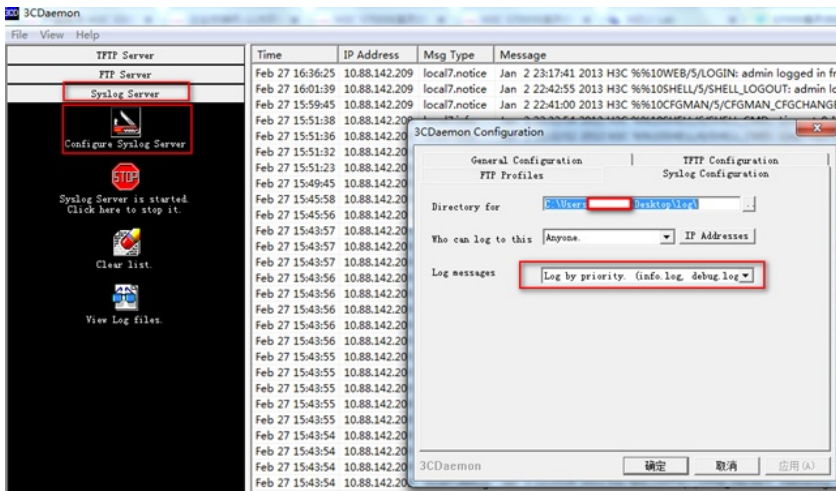
3.1 配置日志主机

点击日志——设置中配置日志主机地址



3.2 日志服务器的配置

#在日志主机上安装并配置syslog server，这里应用3CDaemon软件为例，操作界面如下图所示，log messages可以根据priority、facility以及ip address将信息记录到不同的文档。

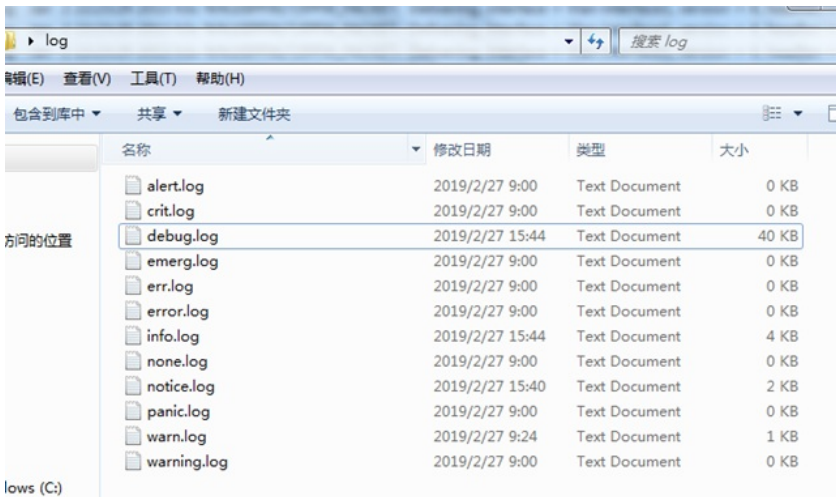


4 验证配置

#设备上的日志信息就会被记录下来保存到3C Daemon软件设置的路径:

```
Feb 27 09:34:25 10.88.142.209 local7.notice Jan 2 16:15:39 2013 h3c %%10SHELL/5/SHELL_LOGOUT: admin logged out from 10.88.14.160.
Feb 27 09:29:46 10.88.142.209 local7.notice Jan 2 16:11:00 2013 h3c %%10CFGMAN/5/CFGMAN_CFGCHANGED: EventIndex=12,CommandSource=smp-ConfigSox
Feb 27 09:24:23 10.88.142.209 local7.info Jan 2 16:05:37 2013 h3c %%10SHELL/5/SHELL_CMD: Line-vty0-IPAddr=10.88.14.160-User=admin; Command is dis th
Feb 27 09:24:20 10.88.142.209 local7.warn Jan 2 16:05:35 2013 h3c %%10SHELL/4/SHELL_CMD_MATCHFAIL: User=admin-IPAddr=10.88.14.160; Command dis t in
Feb 27 09:23:46 10.88.142.209 local7.info Jan 2 16:05:00 2013 h3c %%10SHELL/6/SHELL_CMD: Line-vty0-IPAddr=10.88.14.160-User=admin; Command is info-c
Feb 27 09:22:59 10.88.142.209 local7.info Jan 2 16:04:13 2013 h3c %%10SHELL/6/SHELL_CMD: Line-vty0-IPAddr=10.88.14.160-User=admin; Command is dis th
Feb 27 09:22:57 10.88.142.209 local7.info Jan 2 16:04:11 2013 h3c %%10SHELL/6/SHELL_CMD: Line-vty0-IPAddr=10.88.14.160-User=admin; Command is info-c
Feb 27 09:14:51 10.88.142.209 local7.info Jan 2 15:56:06 2013 h3c %%10PING/6/PING_STATUS_INFO: Ping statistics for 10.88.14.160: 5 packet(s) transmitted, 5 pac
Feb 27 09:12:41 10.88.142.209 local7.info Jan 2 15:53:55 2013 h3c %%10PING/6/PING_STATUS_INFO: Ping statistics for 10.88.14.160: 5 packet(s) transmitted, 5 pac
Feb 27 09:00:16 local userinfo Listening for Syslog messages on IP address: 10.88.14.160
```

#日志主机上会生成相应的日志文件:



```
Feb 27 09:29:46 10.88.142.209 Jan 2 16:11:00 2013 h3c %%10CFGMAN/5/CFGMAN_CFGCHAN
Feb 27 09:34:25 10.88.142.209 Jan 2 16:15:39 2013 h3c %%10SHELL/5/SHELL_LOGOUT: a
Feb 27 09:48:04 10.88.142.209 Jan 2 16:29:19 2013 h3c %%10SHELL/5/SHELL_LOGIN: ad
Feb 27 09:49:46 10.88.142.209 Jan 2 16:31:00 2013 h3c %%10CFGMAN/5/CFGMAN_CFGCHAN
Feb 27 09:59:31 10.88.142.209 Jan 2 16:40:45 2013 h3c %%10SHELL/5/SHELL_LOGOUT: a
Feb 27 10:29:43 10.88.142.209 Jan 2 17:10:58 2013 h3c %%10SHELL/5/SHELL_LOGIN: ad
Feb 27 10:39:47 10.88.142.209 Jan 2 17:21:02 2013 h3c %%10SHELL/5/SHELL_LOGOUT: a
Feb 27 13:52:23 10.88.142.209 Jan 2 20:33:38 2013 h3c %%10WEB/5/LOGIN: admin logg
Feb 27 14:02:43 10.88.142.209 Jan 2 20:43:58 2013 h3c %%10WEB/5/LOGOUT: admin log
Feb 27 15:40:31 10.88.142.209 Jan 2 22:21:46 2013 h3c %%10SHELL/5/SHELL_LOGIN: ad
Feb 27 15:49:45 10.88.142.209 Jan 2 22:31:00 2013 h3c %%10CFGMAN/5/CFGMAN_CFGCHAN
Feb 27 15:59:45 10.88.142.209 Jan 2 22:41:00 2013 H3C %%10CFGMAN/5/CFGMAN_CFGCHAN
Feb 27 16:01:39 10.88.142.209 Jan 2 22:42:55 2013 H3C %%10SHELL/5/SHELL_LOGOUT: a
Feb 27 16:36:25 10.88.142.209 Jan 2 23:17:41 2013 H3C %%10WEB/5/LOGIN: admin logg
Feb 27 16:46:35 10.88.142.209 Jan 2 23:27:51 2013 H3C %%10WEB/5/LOGOUT: admin log
Feb 27 16:47:16 10.88.142.209 Jan 2 23:28:32 2013 H3C %%10SHELL/5/SHELL_LOGIN: ad
Feb 27 16:57:18 10.88.142.209 Jan 2 23:38:33 2013 H3C %%10SHELL/5/SHELL_LOGOUT: a
Feb 27 16:59:22 10.88.142.209 Jan 2 23:40:38 2013 H3C %%10SHELL/5/SHELL_LOGIN: ad
Feb 27 17:09:47 10.88.142.209 Jan 2 23:51:03 2013 H3C %%10SHELL/5/SHELL_LOGOUT: a
Feb 27 17:17:15 10.88.142.209 Jan 2 23:58:31 2013 H3C %%10SHELL/5/SHELL_LOGIN: ad
Feb 27 17:27:22 10.88.142.209 Jan 3 00:08:38 2013 H3C %%10SHELL/5/SHELL_LOGOUT: a
Feb 27 17:47:32 10.88.142.209 Jan 3 00:28:48 2013 H3C %%10WEB/5/LOGIN_FAILED: adm
Feb 27 17:47:36 10.88.142.209 Jan 3 00:28:52 2013 H3C %%10WEB/5/LOGIN: admin logg
Feb 27 17:58:16 10.88.142.209 Jan 3 00:39:32 2013 H3C %%10WEB/5/LOGOUT: admin log
Feb 27 18:26:44 10.88.142.209 Jan 3 01:07:59 2013 H3C %%10WEB/5/LOGIN: admin logg
Feb 27 18:32:43 10.88.142.209 Jan 3 01:13:58 2013 H3C %%10SHELL/5/SHELL_LOGIN: ad
Feb 27 18:35:36 10.88.142.209 Jan 3 01:16:51 2013 H3C %%10SHELL/5/SHELL_LOGOUT: a
```

配置关键点