

## 组网及说明

### 1 配置需求或说明

#### 1.1 适用产品系列

本案例适用于如S7006、S7503E、S7506E、S7606、S10510、S10508等S7000、S7500E、S10500系列，且软件版本是V7的交换机

#### 1.2 配置需求及实现的效果

将系统的日志信息发送到日志主机上保存，防止设备重启导致日志丢失

### 2 组网图



## 配置步骤

### 3 配置步骤

配置日志主机前需要保证日志主机设备和交换机之间网络可达

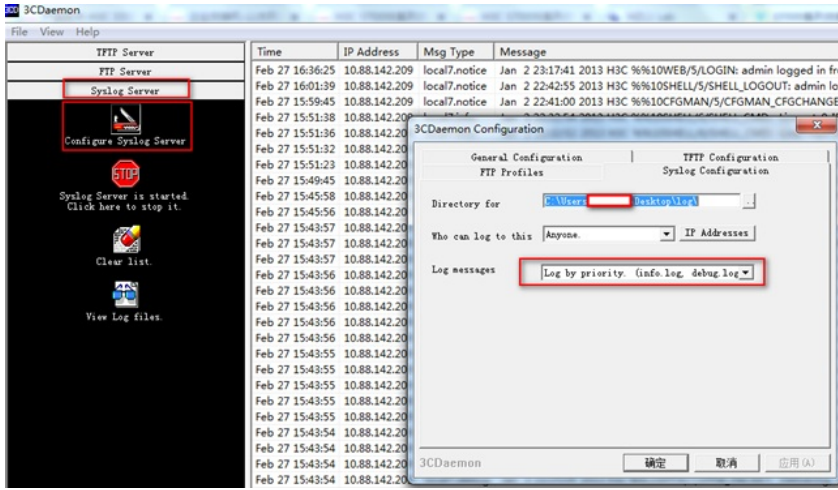
#### 3.1 配置日志主机

点击日志——设置中配置日志主机地址



#### 3.2 日志服务器的配置

#在日志主机上安装并配置syslog server，这里应用3CDaemon软件为例，操作界面如下图所示，log messages可以根据priority、facility以及ip address将信息记录到不同的文档。

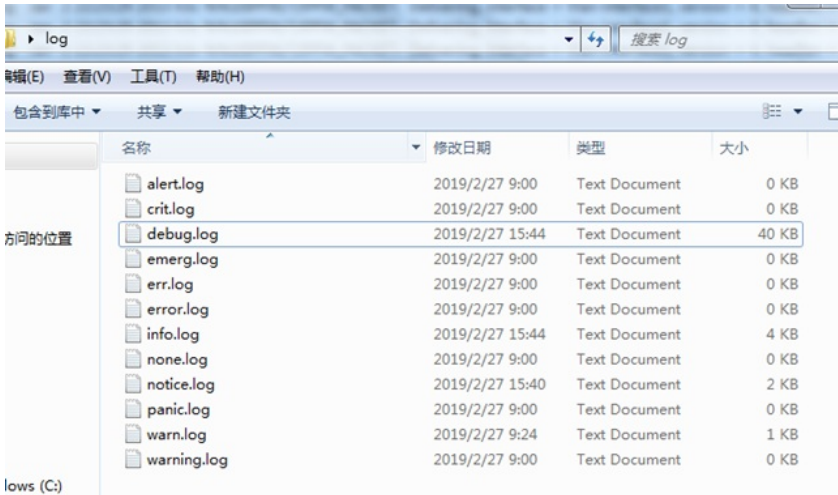


#### 4 验证配置

#设备上的日志信息就会被记录下来保存到3C Daemon软件设置的路径:

Time	IP Address	Msg Type	Message
Feb 27 09:34:25	10.88.142.209	local7.notice	Jan 2 16:15:39 2013 h3c %%10SHELL/5/SHELL_LOGOUT: admin logged out from 10.88.14.160.
Feb 27 09:29:46	10.88.142.209	local7.notice	Jan 2 16:11:00 2013 h3c %%10CFGMAN/5/CFGMAN_CFGCHANGED: EventIndex=12,CommandSource=smp-ConfigSox
Feb 27 09:24:23	10.88.142.209	local7.info	Jan 2 16:05:37 2013 h3c %%10SHELL/5/SHELL_CMD: Line-vty0-IPAddr=10.88.14.160-User=admin; Command is dis th
Feb 27 09:24:20	10.88.142.209	local7.warn	Jan 2 16:05:35 2013 h3c %%10SHELL/4/SHELL_CMD_MATCHFAIL: User=admin-IPAddr=10.88.14.160; Command dis t in
Feb 27 09:23:46	10.88.142.209	local7.info	Jan 2 16:05:00 2013 h3c %%10SHELL/6/SHELL_CMD: Line-vty0-IPAddr=10.88.14.160-User=admin; Command is info-c
Feb 27 09:22:59	10.88.142.209	local7.info	Jan 2 16:04:13 2013 h3c %%10SHELL/6/SHELL_CMD: Line-vty0-IPAddr=10.88.14.160-User=admin; Command is dis th
Feb 27 09:22:57	10.88.142.209	local7.info	Jan 2 16:04:11 2013 h3c %%10SHELL/6/SHELL_CMD: Line-vty0-IPAddr=10.88.14.160-User=admin; Command is info-c
Feb 27 09:14:51	10.88.142.209	local7.info	Jan 2 15:56:06 2013 h3c %%10PING/6/PING_STATUS_INFO: Ping statistics for 10.88.14.160: 5 packet(s) transmitted, 5 pac
Feb 27 09:12:41	10.88.142.209	local7.info	Jan 2 15:53:55 2013 h3c %%10PING/6/PING_STATUS_INFO: Ping statistics for 10.88.14.160: 5 packet(s) transmitted, 5 pac
Feb 27 09:00:16	local	userinfo	Listening for Syslog messages on IP address: 10.88.14.160

#日志主机上会生成相应的日志文件:



Time	IP Address	Msg Type	Message
Feb 27 09:29:46	10.88.142.209	local7.notice	Jan 2 16:11:00 2013 h3c %%10CFGMAN/5/CFGMAN_CFGCHANGED: EventIndex=12,CommandSource=smp-ConfigSox
Feb 27 09:34:25	10.88.142.209	local7.notice	Jan 2 16:15:39 2013 h3c %%10SHELL/5/SHELL_LOGOUT: admin logged out from 10.88.14.160.
Feb 27 09:48:04	10.88.142.209	local7.notice	Jan 2 16:29:19 2013 h3c %%10SHELL/5/SHELL_LOGIN: admin logged in from 10.88.14.160.
Feb 27 09:49:46	10.88.142.209	local7.notice	Jan 2 16:31:00 2013 h3c %%10CFGMAN/5/CFGMAN_CFGCHANGED: EventIndex=12,CommandSource=smp-ConfigSox
Feb 27 09:59:31	10.88.142.209	local7.notice	Jan 2 16:40:45 2013 h3c %%10SHELL/5/SHELL_LOGOUT: admin logged out from 10.88.14.160.
Feb 27 10:29:43	10.88.142.209	local7.notice	Jan 2 17:10:58 2013 h3c %%10SHELL/5/SHELL_LOGIN: admin logged in from 10.88.14.160.
Feb 27 10:39:47	10.88.142.209	local7.notice	Jan 2 17:21:02 2013 h3c %%10SHELL/5/SHELL_LOGOUT: admin logged out from 10.88.14.160.
Feb 27 13:52:23	10.88.142.209	local7.notice	Jan 2 20:33:38 2013 h3c %%10WEB/5/LOGIN: admin logged in from 10.88.14.160.
Feb 27 14:02:43	10.88.142.209	local7.notice	Jan 2 20:43:58 2013 h3c %%10WEB/5/LOGOUT: admin logged out from 10.88.14.160.
Feb 27 15:40:31	10.88.142.209	local7.notice	Jan 2 22:21:46 2013 h3c %%10SHELL/5/SHELL_LOGIN: admin logged in from 10.88.14.160.
Feb 27 15:49:45	10.88.142.209	local7.notice	Jan 2 22:31:00 2013 h3c %%10CFGMAN/5/CFGMAN_CFGCHANGED: EventIndex=12,CommandSource=smp-ConfigSox
Feb 27 15:59:45	10.88.142.209	local7.notice	Jan 2 22:41:00 2013 H3C %%10CFGMAN/5/CFGMAN_CFGCHANGED: EventIndex=12,CommandSource=smp-ConfigSox
Feb 27 16:01:39	10.88.142.209	local7.notice	Jan 2 22:42:55 2013 H3C %%10SHELL/5/SHELL_LOGOUT: admin logged out from 10.88.14.160.
Feb 27 16:36:25	10.88.142.209	local7.notice	Jan 2 23:17:41 2013 H3C %%10WEB/5/LOGIN: admin logged in from 10.88.14.160.
Feb 27 16:46:35	10.88.142.209	local7.notice	Jan 2 23:27:51 2013 H3C %%10WEB/5/LOGOUT: admin logged out from 10.88.14.160.
Feb 27 16:47:16	10.88.142.209	local7.notice	Jan 2 23:28:32 2013 H3C %%10SHELL/5/SHELL_LOGIN: admin logged in from 10.88.14.160.
Feb 27 16:57:18	10.88.142.209	local7.notice	Jan 2 23:38:33 2013 H3C %%10SHELL/5/SHELL_LOGOUT: admin logged out from 10.88.14.160.
Feb 27 16:59:22	10.88.142.209	local7.notice	Jan 2 23:40:38 2013 H3C %%10SHELL/5/SHELL_LOGIN: admin logged in from 10.88.14.160.
Feb 27 17:09:47	10.88.142.209	local7.notice	Jan 2 23:51:03 2013 H3C %%10SHELL/5/SHELL_LOGOUT: admin logged out from 10.88.14.160.
Feb 27 17:17:15	10.88.142.209	local7.notice	Jan 2 23:58:31 2013 H3C %%10SHELL/5/SHELL_LOGIN: admin logged in from 10.88.14.160.
Feb 27 17:27:22	10.88.142.209	local7.notice	Jan 3 00:08:38 2013 H3C %%10SHELL/5/SHELL_LOGOUT: admin logged out from 10.88.14.160.
Feb 27 17:47:32	10.88.142.209	local7.notice	Jan 3 00:28:48 2013 H3C %%10WEB/5/LOGIN_FAILED: admin failed to log in from 10.88.14.160.
Feb 27 17:47:36	10.88.142.209	local7.notice	Jan 3 00:28:52 2013 H3C %%10WEB/5/LOGIN: admin logged in from 10.88.14.160.
Feb 27 17:58:16	10.88.142.209	local7.notice	Jan 3 00:39:32 2013 H3C %%10WEB/5/LOGOUT: admin logged out from 10.88.14.160.
Feb 27 18:26:44	10.88.142.209	local7.notice	Jan 3 01:07:59 2013 H3C %%10WEB/5/LOGIN: admin logged in from 10.88.14.160.
Feb 27 18:32:43	10.88.142.209	local7.notice	Jan 3 01:13:58 2013 H3C %%10SHELL/5/SHELL_LOGIN: admin logged in from 10.88.14.160.
Feb 27 18:35:36	10.88.142.209	local7.notice	Jan 3 01:16:51 2013 H3C %%10SHELL/5/SHELL_LOGOUT: admin logged out from 10.88.14.160.

配置关键点