

知 A case to solve the problem that error occurs when accessing CAS cvm in non-Chinese or English browsers

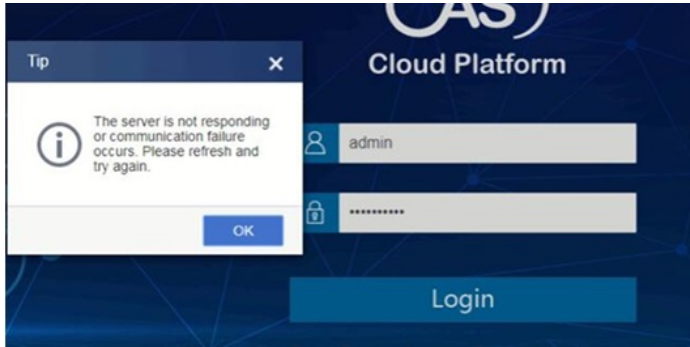
Cloud Computing 唐劼 2020-09-28 Published

Network Topology

version: CAS E0706

Problem Description

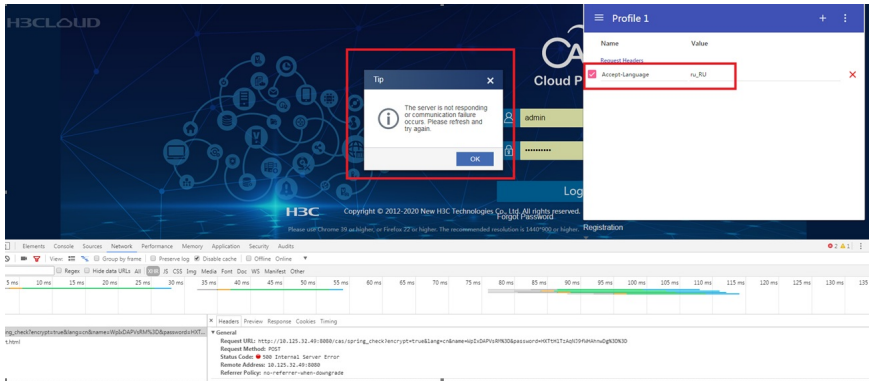
Russian engineer reported an cvm error when accessing CAS cvm in google chrome. The tip is that "the server is not responding or communication failure occurs. Please refresh and try again".



Process Analysis

After the check of network status, the engineer try to connect the pc to the CAS server directly. The error still occurs.

The problem is caused by the Accept-Language of the request header set to ru_RU. CAS E0706 only supports chinese and english language header in browser.



Solution

We recommend you to use google chrome. When the browser uses non-Chinese or English, you need setup browser language in "browser settings---language settings---add Chinese or English language" directory, and move Chinese or English up to the top.

