

组网及说明

1 配置需求或说明

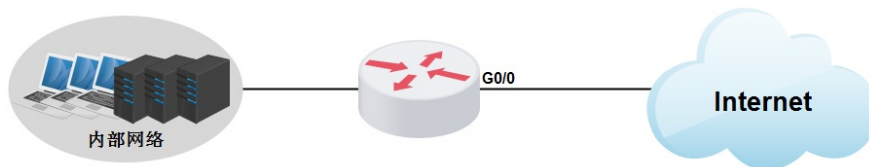
1.1 适用产品系列

本案例适用于如MSR810、MSR93X系列的路由器

1.2 配置需求及实现的效果

路由器作为企业网络的出口路由器，要实现有状态的IPv6上网。此案例中，运营商地址为3001::1/64，运营商给的公网地址为3001::2/64，网关为3001::1/64，内网地址段为2001::/64，内网网关为2001::1/64，运营商DNS为1::1。

2 组网图



配置步骤

3 配置步骤

3.1 配置WAN接口IPv6地址

#将运营商给的固定IP设置在WAN口

```
system-view
```

```
[H3C]interface GigabitEthernet 0/0
```

```
[H3C-GigabitEthernet0/0] ipv6 address 3001::2/64
```

```
[H3C-GigabitEthernet0/0]quit
```

3.2 配置内网IPv6网关和DHCPv6地址池

```
#
```

```
[H3C]interface GigabitEthernet 0/1
```

```
[H3C-GigabitEthernet0/1]ipv6 address 2001::1/64
```

```
[H3C-GigabitEthernet0/1]undo ipv6 nd ra halt
```

```
[H3C-GigabitEthernet0/1]ipv6 dhcp server apply pool 1 allow-hint rapid-commit
```

```
[H3C-GigabitEthernet0/1]ipv6 nd autoconfig managed-address-flag
```

```
[H3C-GigabitEthernet0/1]ipv6 nd autoconfig other-flag
```

```
[H3C-GigabitEthernet0/1]quit
```

```
#
```

```
[H3C]ipv6
```

```
[H3C]ipv6 dhcp server enable
```

```
#
```

```
[H3C]ipv6 dhcp pool 1
```

```
[H3C-dhcp6-pool-1]network 2001::/64
```

```
[H3C-dhcp6-pool-1]gateway-list 2001::1
```

```
[H3C-dhcp6-pool-1]dns-server 1::1
```

```
[H3C-dhcp6-pool-1]quit
```

```
#
```

3.3 配置IPv6默认路由

#默认路由由下一跳地址配置运营商分配的网关地址

```
#
```

```
[H3C]ipv6 route 0::0 3001::1
```

```
#
```

#默认路由由运营商指向内网下一跳是WAN口地址

```
#
```

```
[H3C]ipv6 route 2001::64 3001::2
```

```
#
```

保存配置

```
[H3C]save force
```

配置关键点