

组网及说明

1 配置需求或说明

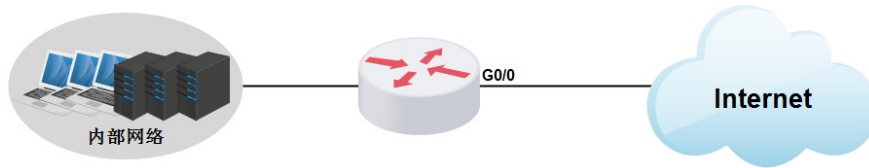
1.1 适用产品系列

本案例适用于如2600-6-X1、MSR2600-10-X1、MSR3600-28-X1、MSR3600-28-X1-DP等MSR2600-XX-X1、3610-X1系列的路由器

1.2 配置需求及实现的效果

路由器作为企业网络的出口路由器，要实现有状态的IPv6上网。此案例中，运营商地址为3001::1/64，运营商给的公网地址为3001::2/64，网关为3001::1/64，内网地址段为2001::/64，内网网关为2001::1/64，运营商DNS为1::1。

2 组网图



配置步骤

3 配置步骤

3.1 配置WAN接口IPv6地址

#将运营商给的固定IP设置在WAN口

```
<H3C>system-view
[H3C]interface GigabitEthernet 0/0
[H3C-GigabitEthernet0/0] ipv6 address 3001::2/64
[H3C-GigabitEthernet0/0] quit
```

3.2 配置内网IPv6网关和DHCPv6地址池

```
#
[H3C]interface GigabitEthernet 0/1
[H3C-GigabitEthernet0/1] ipv6 address 2001::1/64
[H3C-GigabitEthernet0/1] undo ipv6 nd ra halt
[H3C-GigabitEthernet0/1] ipv6 dhcp server apply pool 1 allow-hint rapid-commit
[H3C-GigabitEthernet0/1] ipv6 nd autoconfig managed-address-flag
[H3C-GigabitEthernet0/1] ipv6 nd autoconfig other-flag
[H3C-GigabitEthernet0/1] quit
```

```
#
[H3C]ipv6
[H3C]ipv6 dhcp server enable
#
[H3C]ipv6 dhcp pool 1
[H3C-dhcp6-pool-1] network 2001::/64
[H3C-dhcp6-pool-1] gateway-list 2001::1
[H3C-dhcp6-pool-1] dns-server 1::1
[H3C-dhcp6-pool-1] quit
```

3.3 配置IPv6默认路由

#默认路由由下一跳地址配置运营商分配的网关地址

```
#
[H3C]ipv6 route 0::0 3001::1
#
#默认路由由运营商指向内网下一跳是WAN口地址
#
[H3C]ipv6 route 2001::64 3001::2
```

```
#
保存配置
[H3C]save force
```

配置关键点

