

## 组网及说明

### 1 配置需求或说明

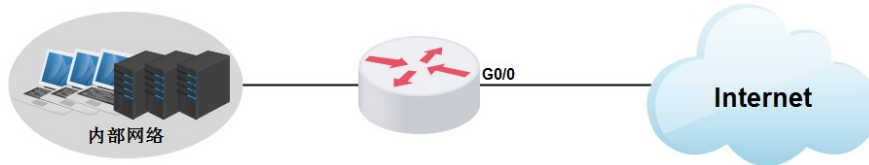
#### 1.1 适用产品系列

本案例适用于如ICG5000G、ICG5000T、ICG6000系列的路由器

#### 1.2 配置需求及实现的效果

路由器作为企业网络的出口路由器，要实现有状态的IPv6上网。此案例中，运营商地址为3001::1/64，运营商给的公网地址为3001::2/64，网关为3001::1/64，内网地址段为2001::/64，内网网关为2001::1/64，运营商DNS为1::1。

### 2 组网图



## 配置步骤

### 3 配置步骤

#### 3.1 配置WAN接口IPv6地址

#将运营商给的固定IP设置在WAN口

```
<H3C>system-view
[H3C]interface GigabitEthernet 0/0
[H3C-GigabitEthernet0/0] ipv6 address 3001::2/64
[H3C-GigabitEthernet0/0]quit
```

#### 3.2 配置内网IPv6网关和DHCPv6地址池

```
#
[H3C]interface GigabitEthernet 0/1
[H3C-GigabitEthernet0/1]ipv6 address 2001::1/64
[H3C-GigabitEthernet0/1]undo ipv6 nd ra halt
[H3C-GigabitEthernet0/1]ipv6 dhcp server apply pool 1 allow-hint rapid-commit
[H3C-GigabitEthernet0/1]ipv6 nd autoconfig managed-address-flag
[H3C-GigabitEthernet0/1]ipv6 nd autoconfig other-flag
[H3C-GigabitEthernet0/1]quit
```

```
#
[H3C]ipv6
[H3C]ipv6 dhcp server enable
#
[H3C]ipv6 dhcp pool 1
[H3C-dhcp6-pool-1]network 2001::/64
[H3C-dhcp6-pool-1]gateway-list 2001::1
[H3C-dhcp6-pool-1]dns-server 1::1
[H3C-dhcp6-pool-1]quit
```

#### 3.3 配置IPv6默认路由

#默认路由由下一跳地址配置运营商分配的网关地址

```
#
[H3C]ipv6 route 0::0 3001::1
#
#默认路由由运营商指向内网下一跳是WAN口地址
#
[H3C]ipv6 route 2001::64 3001::2
```

```
#
保存配置
[H3C]save force
```

## 配置关键点

