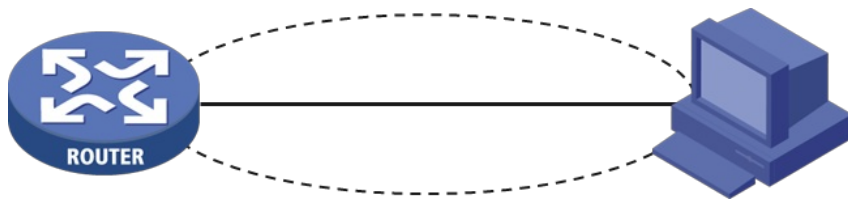


知 MSR路由器用iNode拨L2tp over ipsec典型配置

IPSec VPN L2TP VPN 单畅 2022-10-31 发表

组网及说明



配置步骤

设备侧配置：

```
#
interface Virtual-Template1
  ppp authentication-mode chap domain system
  remote address pool 1
  ip address 192.168.10.1 255.255.255.0
#
interface GigabitEthernet0/1
  port link-mode route
  combo enable copper
  ip address 113.135.195.230 255.255.255.224
  nat outbound
  ipsec apply policy 1
#
interface GigabitEthernet0/2
  port link-mode route
  ip address 172.168.100.1 255.255.255.0
#
local-user vpn class network
  password cipher $c$3$HQmQBQquyfz0iPV52E+t2OkKba7Vn9A=
  service-type ppp
  authorization-attribute user-role network-operator
#
ipsec transform-set 1
  encapsulation-mode tunnel
  esp encryption-algorithm aes-cbc-128
  esp authentication-algorithm md5
#
ipsec transform-set 2
  encapsulation-mode tunnel
  esp encryption-algorithm aes-cbc-256
  esp authentication-algorithm md5
#
ipsec transform-set 3
  encapsulation-mode tunnel
  esp encryption-algorithm 3des-cbc
  esp authentication-algorithm md5
#
ipsec transform-set 4
  encapsulation-mode tunnel
  esp encryption-algorithm aes-cbc-192
  esp authentication-algorithm md5
#
ipsec transform-set 5
  encapsulation-mode tunnel
  esp encryption-algorithm 3des-cbc
  esp authentication-algorithm md5
#
ipsec transform-set 6
  encapsulation-mode tunnel
  esp encryption-algorithm aes-cbc-256
  esp authentication-algorithm md5
#
ipsec policy-template 1 1
  transform-set 1 2 3 4 5 6
  local-address 113.135.xx.xx
  ike-profile 1
  reverse-route dynamic
```

```
#
ipsec policy 1 1 isakmp template 1
#
l2tp-group 1 mode lns
allow l2tp virtual-template 1
```

配置关键点
 tunnel authentication

设备侧ipsec配置需要注意：

1. 两边的加密算法需保持一致；

2. 与iNode对接，ipsec transform-set 里 encapsulation-mode tunnel 安全提议需要配置为传输模式。

否则iNode侧拨号会建立失败，有如下报错：



```
dh group2
```

```
#
```

```
ike proposal 4
```

```
encryption-algorithm aes-cbc-256
```

```
dh group2
```

```
#
```

```
ike proposal 5
```

```
dh group2
```

```
#
```

```
ike proposal 6
```

```
encryption-algorithm aes-cbc-192
```

```
dh group2
```

```
#
```

```
ike keychain 1
```

```
pre-shared-key address 0.0.0.0 0.0.0.0 key cipher $c$3$AY0t5qKEqCJIFOXDUAtStcB6ckWRN/0=
```

```
#
```

iNode上配置：

IPsec VPN认证

基本设置

连接设置

LNS服务器: 113.135.

备用LNS服务器: 113.135.