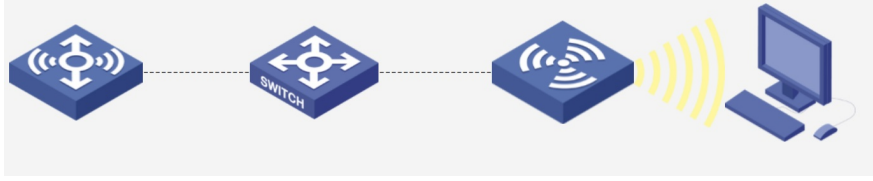


# 本地portal结合user-profile限制用户连接固定无线

wlan安全 Portal zhlliao\_k6c56S 2024-03-25 发表

## 组网及说明



## 配置步骤

创建domain域:

```
domain portal
authorization-attribute idle-cut 15 1024
authorization-attribute user-profile cwytest1 //在domain域下面绑定user-profile cwytest1
authentication portal local
authorization portal local //这一步一定要选择local
accounting portal none
```

创建domain域:

```
domain portal1
authorization-attribute idle-cut 15 1024
authorization-attribute user-profile cwytest2 //在domain域下面绑定user-profile cwytest2
authentication portal local
authorization portal local //这一步一定要选择local
accounting portal none
```

配置portal的web服务:

```
portal web-server newpt
url http://10.40.92.1/portal
```

创建无线服务模板portal:

```
wlan service-template portal
ssid test123
vlan 100
client forwarding-location ap
portal enable method direct
portal domain portal
portal apply web-server newpt
service-template enable
```

创建无线服务模板portal1

```
wlan service-template portal1
ssid test1234
vlan 100
client forwarding-location ap
portal enable method direct
portal domain portal1
portal apply web-server newpt
service-template enable
```

创建user-profile cwytest1

```
user-profile cwytest1
wlan permit-ssid test123 //在user-profile下面只允许test123信号
```

创建user-profile cwytest2

```
user-profile cwytest2
wlan permit-ssid test1234 //在user-profile下面只允许test123信号
```

创建本地portal用户:

```
local-user cwytest1 class network
password simple client@12345
service-type portal
authorization-attribute user-profile cwytest1 //在用户下面关联相关的user-profile属性
authorization-attribute user-role network-operator
```

local-user cwytest2 class network

```
password simple client@12345
service-type portal
authorization-attribute user-profile cwytest2 //在用户下面关联相关的user-profile属性
authorization-attribute user-role network-operator
```

## 配置关键点

在配置domain的时候认证需要选择本地:

```
domain portal1
```

```
authorization-attribute idle-cut 15 1024
```

```
authorization-attribute user-profile cwytest2 //在domain域下面绑定user-profile cwytest2
```

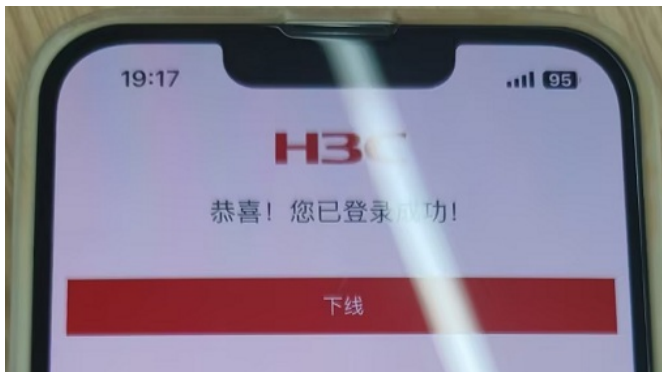
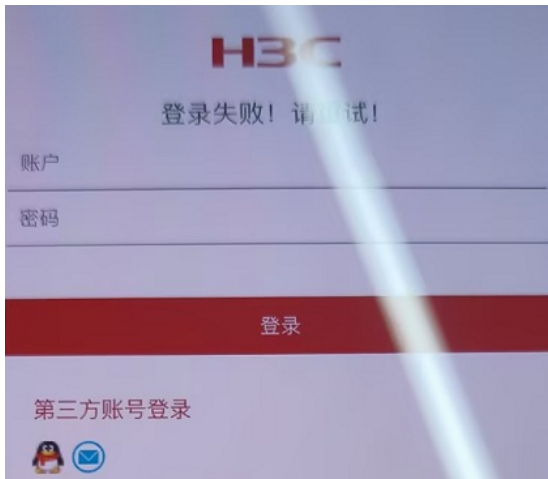
```
authentication portal local
```

```
authorization portal local //这一步一定要选择local
```

```
accounting portal none
```

测试结果:

连接ssid test123,使用用户cwytest2用户进行认证,无法认证成功拒绝接入,使用cwytest1用户登陆正常



```
<AC>dis portal user username cwyttest1 verbose
```

```
Basic:
```

```
AP name: ap1
```

```
Radio ID: 2
```