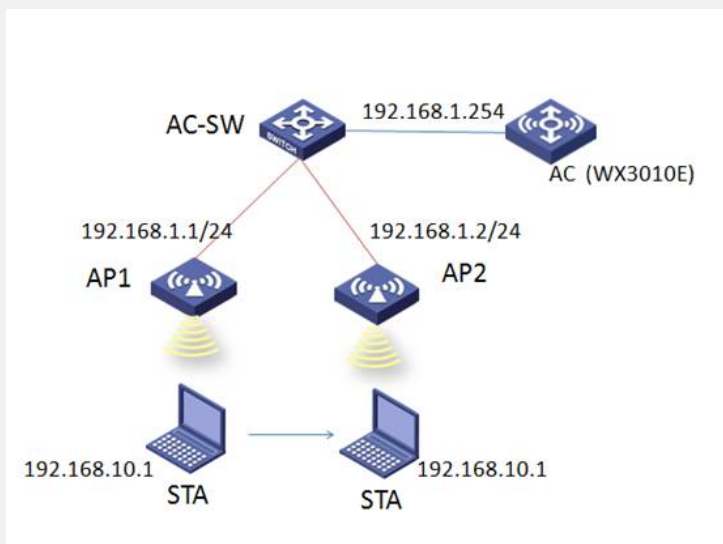


## wx系列无线漫游测试的配置

### 一、组网需求

AC、AP1和AP2在VLAN 1中，客户端先通过AP1接入无线网络，然后漫游到同一无线控制器相连的AP2上。

#### 1. 组网图



### 二、配置步骤:

#### 1.AC侧配置（二层漫游）

```
[WX3010E]dis cu
#
version 5.20, Release 3308P23
#
sysname WX3010E
#
domain default enable system
#
telnet server enable
#
port-security enable
#
oap management-ip 192.168.0.101 slot 0
#
wlan auto-ap enable
#
password-recovery enable
#
vlan 1
#
vlan 10
#
```

```
domain system
access-limit disable
state active
idle-cut disable
self-service-url disable
#
dhcp server ip-pool pool-ap
network 192.168.1.0 mask 255.255.255.0
#
dhcp server ip-pool pool-cilent
network 192.168.10.0 mask 255.255.255.0
gateway-list 192.168.10.254
dns-list 8.8.8.8
#
user-group system
group-attribute allow-guest
#
local-user admin
password cipher $c$3$xwQerkLRnNejWOuUGcohWGxGHyZUXS0g
authorization-attribute level 3
service-type telnet
#
wlan rrm
dot11a mandatory-rate 6 12 24
dot11a supported-rate 9 18 36 48 54
dot11b mandatory-rate 1 2
dot11b supported-rate 5.5 11
dot11g mandatory-rate 1 2 5.5 11
dot11g supported-rate 6 9 12 18 24 36 48 54
#
wlan service-template 1 clear
ssid romain
bind WLAN-ESS 1
service-template enable
#
interface Bridge-Aggregation1
port link-type trunk
port trunk permit vlan all
#
interface NULL0
#
interface Vlan-interface1
ip address 192.168.1.254 255.255.255.0
#
interface Vlan-interface10
ip address 192.168.10.254 255.255.255.0
#
```

```
interface GigabitEthernet1/0/1
port link-type trunk
port trunk permit vlan all
port link-aggregation group 1
#
interface GigabitEthernet1/0/2
port link-type trunk
port trunk permit vlan all
port link-aggregation group 1
#
interface WLAN-ESS1
port access vlan 10
#
wlan ap ap1_0003 model WA2612 id 3
serial-id 219801A0CJC124002846
radio 1
max-power 15
service-template 1
radio enable
#
wlan ap ap2_0037 model WA2612-AGN id 4
serial-id 210235A35WB09C000028
radio 1
max-power 15
service-template 1
radio enable
#
dhcp enable
#
arp-snooping enable
#
load xml-configuration
#
user-interface con 0
user-interface vty 0 4
authentication-mode scheme
user privilege level 3
#
Return
2.AC侧配置 (三层漫游)
[WX3010E]dis cu
#
version 5.20, Release 3308P23
#
sysname WX3010E
#
domain default enable system
```

```
#
telnet server enable

#
port-security enable

#
oap management-ip 192.168.0.101 slot 0

#
wlan auto-ap enable

#
password-recovery enable

#
vlan 1

#
vlan 10 to 11

#
domain system
access-limit disable
state active
idle-cut disable
self-service-url disable

#
dhcp server ip-pool client
network 192.168.11.0 mask 255.255.255.0
gateway-list 192.168.11.254
dns-list 8.8.8.8

#
dhcp server ip-pool pool-ap
network 192.168.1.0 mask 255.255.255.0

#
dhcp server ip-pool pool-cilent
network 192.168.10.0 mask 255.255.255.0
gateway-list 192.168.10.254
dns-list 8.8.8.8

#
user-group system
group-attribute allow-guest

#
local-user admin
password cipher $c$3$xwQerkLRnNejWOuUGcohWGxGHyZUXS0g
authorization-attribute level 3
service-type telnet

#
wlan rrm
dot11a mandatory-rate 6 12 24
dot11a supported-rate 9 18 36 48 54
dot11b mandatory-rate 1 2
dot11b supported-rate 5.5 11
```

```
dot11g mandatory-rate 1 2 5.5 11
dot11g supported-rate 6 9 12 18 24 36 48 54
#
wlan service-template 1 clear
ssid remain
bind WLAN-ESS 1
service-template enable
#
interface Bridge-Aggregation1
port link-type trunk
port trunk permit vlan all
#
interface NULL0
#
interface Vlan-interface1
ip address 192.168.1.254 255.255.255.0
#
interface Vlan-interface10
ip address 192.168.10.254 255.255.255.0
#
interface Vlan-interface11
ip address 192.168.11.254 255.255.255.0
#
interface GigabitEthernet1/0/1
port link-type trunk
port trunk permit vlan all
port link-aggregation group 1
#
interface GigabitEthernet1/0/2
port link-type trunk
port trunk permit vlan all
port link-aggregation group 1
#
interface WLAN-ESS1
port link-type hybrid
undo port hybrid vlan 1
port hybrid vlan 10 to 11 untagged
mac-vlan enable
#
wlan ap ap1_0003 model WA2612 id 3
serial-id 219801A0CJC124002846
radio 1
max-power 15
service-template 1 vlan-id 10
radio enable
#
wlan ap ap2_0037 model WA2612-AGN id 4
```

```
serial-id 210235A35WB09C000028
```

```
radio 1
```

```
max-power 15
```

```
service-template 1 vlan-id 11
```

```
radio enable
```

```
#
```

```
dhcp enable
```

```
#
```

```
arp-snooping enable
```

```
#
```

```
load xml-configuration
```

```
#
```

```
user-interface con 0
```

```
user-interface vty 0 4
```

```
authentication-mode scheme
```

```
user privilege level 3
```

```
#
```

```
Return
```

**3.SW侧配置：略**

### 三、配置关键点：

#### 1.AC侧主要配置（二层漫游）

##### 1.配置服务模板

```
#创建一个clear类型的无线服务模板1
```

```
[WX3010E]wlan service-template 1 clear
```

```
#设置当前服务模板的SSID为romain
```

```
[WX3010E]ssid romain
```

```
#在服务模板1下绑定无线接口1
```

```
[WX3010E]bind WLAN-ESS 1
```

```
#使能服务模板
```

```
[WX3010E]service-template enable
```

##### 2.配置无线接口

```
[WX3010E]interface WLAN-ESS1
```

```
[WX3010E]port access vlan 10
```

##### 3.配置AP管理模板

```
#在AP视图下的射频接口上绑定服务模板1
```

```
wlan ap ap1_0003 model WA2612 id 3
```

```
serial-id 219801A0CJC124002846
```

```
radio 1
```

```
max-power 15
```

```
service-template 1
```

```
radio enable
```

```
#在AP视图下的射频接口上绑定服务模板1
```

```
wlan ap ap2_0037 model WA2612-AGN id 4
```

```
serial-id 210235A35WB09C000028
```

```
radio 1
```

```
max-power 15
```

```
service-template 1
```

```
radio enable
```

## 2.AC侧主要配置 (三层漫游)

1. 增加vlan信息, 添加STA接入的VLAN 11和VLAN 12

```
[WX3010E]vlan 10 to 11
```

2. 配置服务模板

```
#创建一个clear类型的无线服务模板1
```

```
[WX3010E]wlan service-template 1 clear
```

```
#设置当前服务模板的SSID为romain
```

```
[WX3010E]ssid romain
```

```
#在服务模板1下绑定无线接口1
```

```
[WX3010E]bind WLAN-ESS 1
```

```
#使能服务模板
```

```
[WX3010E]service-template enable
```

3.配置无线接口为hybrid混合类型, 三层漫游必须配置mac-vlan enable

```
[WX3010E]interface WLAN-ESS1
```

```
[WX3010E]port link-type hybrid
```

```
[WX3010E]undo port hybrid vlan 1
```

```
[WX3010E]port hybrid vlan 10 to 11 untagged
```

```
[WX3010E]mac-vlan enable
```

4.配置两个AP模板, 在射频接口下绑定同一服务模板和不同的vlan-id

```
#配置AP管理模板, 射频接口下绑定服务模板1, vlan-id为 10
```

```
wlan ap ap1_0003 model WA2612 id 3
```

```
serial-id 219801A0CJC124002846
```

```
radio 1
```

```
max-power 15
```

```
service-template 1 vlan-id 10
```

```
radio enable
```

```
#配置AP管理模板, 射频接口下绑定服务模板1, vlan-id为11
```

```
wlan ap ap2_0037 model WA2612-AGN id 4
```

```
serial-id 210235A35WB09C000028
```

```
radio 1
```

```
max-power 15
```

```
service-template 1 vlan-id 11
```

```
radio enable
```

## 五、验证结果:

### 1.二层漫游:

1.查看客户端首次接入无线服务的信息

```
[WX3010E]dis wlan client verbose
Total Number of Clients      : 1
Client Information
-----
MAC Address      : 54e4-3a57-095a
User Name       : -NA-
AID             : 1
AP Name         : ap2_0037
Radio ID        : 1
SSID           : romain
BSSID          : 0023-89c2-2810
Port           : WLAN-DBSS1:0
VLAN           : 10
State          : Running
Power Save Mode : Sleep
Wireless Mode  : 11gn
Channel Band-width : 20MHz
SM Power Save Enable : Enabled
SM Power Save Mode : Static
Short GI for 20MHz : Not Supported
Short GI for 40MHz : Not Supported
Support MCS Set  : 0,1,2,3,4,5,6,7
Block ACK-TID 0  : BOTH
```

2.将AP2\_0037踢下线, 再次查看客户端信息, 关联到AP1\_0003后IP地址不变

```

<WX3010E>dis wlan client verbose
Total Number of clients      : 1
                          client Information
-----
MAC Address      : 54e4-3a57-095a
User Name       : -NA-
AP Name         : ap1_0003
Radio Id        : 1
SSID            : romain
BSSID           : 5866-ba67-6080
Port            : WLAN-DBSS1:1
VLAN            : 10
State           : Running
Power Save Mode : Sleep
Wireless Mode   : 11gn
Channel Band-width : 20MHz
SM Power Save Enable : Enabled
SM Power Save Mode : Static
Short GI for 20MHz : Supported
Short GI for 40MHz : Not Supported
Support MCS Set  : 0,1,2,3,4,5,6,7

```

```

[WX3010E]dis wlan client
Total Number of clients      : 1
                          client Information
-----
SSID: romain
-----
MAC Address  User Name      APID/RID IP Address      VLAN
-----
54e4-3a57-095a -NA-      3 /1 192.168.10.1      10

```

## 2.三层漫游:

### 1. 查看客户端首次接入无线服务的信息

```

[WX3010E]dis wlan client verbose
Total Number of clients      : 1
                          client Information
-----
MAC Address      : 54e4-3a57-095a
User Name       : -NA-
AP Name         : ap1_0003
Radio Id        : 1
SSID            : romain
BSSID           : 5866-ba67-6080
Port            : WLAN-DBSS1:11
VLAN            : 10
State           : Running
Power Save Mode : Sleep
Wireless Mode   : 11gn
Channel Band-width : 20MHz
SM Power Save Enable : Enabled
SM Power Save Mode : Static
Short GI for 20MHz : Supported
Short GI for 40MHz : Not Supported
Support MCS Set  : 0,1,2,3,4,5,6,7

```

### 2. 将AP1\_0003踢下线，再次查看客户端信息，关联到AP2\_0037后且IP地址不变

```

<WX3010E>dis wlan client verbose
Total Number of clients      : 1
                          client Information
-----
MAC Address      : 54e4-3a57-095a
User Name       : -NA-
AP Name         : ap2_0037
Radio Id        : 1
SSID            : romain
BSSID           : 0023-89c2-2810
Port            : WLAN-DBSS1:10
VLAN            : 10
State           : Running
Power Save Mode : Sleep
Wireless Mode   : 11gn
Channel Band-width : 20MHz
SM Power Save Enable : Enabled
SM Power Save Mode : Static
Short GI for 20MHz : Not Supported
Short GI for 40MHz : Not Supported
Support MCS Set  : 0,1,2,3,4,5,6,7

```

```

<WX3010E>dis wlan client
Total Number of clients      : 1
                          client Information
-----
SSID: romain
-----
MAC Address  User Name      APID/RID IP Address      VLAN
-----
54e4-3a57-095a -NA-      4 /1 192.168.10.1      10

```