

组网及说明

1 配置需求或说明

1.1 适用产品系列

本案例适用于如S5008PV2-EI、S5024PV2-EI-PWR、S5048PV2-EI-HPWR、S5120-52P-LI、S5120-28P-SI、S5120-48P-EI等S5000PV2、S5120系列的交换机。

1.2 配置需求及实现的效果

清除Console密码，恢复出厂

2 组网图

无

配置步骤

3 配置步骤

3.1 进入bootroom菜单清除Console密码

通过console线和crt软件连接并登陆设备，然后把设备断电重启。控制台上会打印如下信息，当出现“press Ctrl+B”的时候快速按住“Ctrl+B” 进入botroom菜单

System is starting...

Press Ctrl+D to access BASIC-BOOTWARE MENU

Booting Normal Extend BootWare

The Extend BootWare is self-decompressing.....Done!

BootWare Validating...

Press **Ctrl+B** to enter extended boot menu...

BotWare password: Not required. Please press Enter to continue.

Password recovery capability is enabled.

Note: The current operating device is flash

Enter < Storage Device Operation > to select device.

按住“Ctrl+B”进入如下菜单。选择“<6> Skip Current System Configuration”跳过当前配置启动,不同设备可能不是数字6,

```

=====
|<1> Boot System |
|<2> Enter Serial SubMenu |
|<3> Enter Ethernet SubMenu |
|<4> File Control |
|<5> Restore to Factory Default Configuration |
|<6> Skip Current System Configuration |
|<7> BootWare Operation Menu |
|<8> Clear Super Password |
|<9> Storage Device Operation |
|<0> Reboot |
=====

```

Ctrl+Z: Access EXTEND-ASSISTANT MENU

Ctrl+F: Format File System

Enter your choice(0-9): 6

Flag Set Success.

然后输入0重启设备

```

=====
|<1> Boot System |
|<2> Enter Serial SubMenu |
|<3> Enter Ethernet SubMenu |
|<4> File Control |
|<5> Restore to Factory Default Configuration |
|<6> Skip Current System Configuration |
|<7> BootWare Operation Menu |
|<8> Clear Super Password |
|<9> Storage Device Operation |
|<0> Reboot |
=====

```

Ctrl+Z: Access EXTEND-ASSISTANT MENU

Ctrl+F: Format File System

Enter your choice(0-9): 0

System is starting...

Press ENTER to get started.

### 3.2 如果不需要之前的配置信息的话

操作步骤: 跳过启动文件后直接保存当前配置, 再重启.

save

The current configuration will be written to the device. Are you sure? [Y/N]:y

Please input the file name(\*.cfg)[flash:/startup.cfg]

(To leave the existing filename unchanged, press the enter key): (输入回车)

flash:/startup.cfg exists, overwrite? [Y/N]:y

Validating file. Please wait...

Configuration is saved to device successfully.

reboot

Start to check configuration with next startup configuration file, please wait.....DONE!

Current configuration may be lost after the reboot, save current configuration? [Y/N]:y

This command will reboot the device. Continue? [Y/N]:y

### 3.3 如果需要之前的配置信息的话

#Apr 26 12:02:07:166 2000 H3C SHELL/4/LOGIN:

Trap 1.3.6.1.4.1.25506.2.2.1.1.3.0.1: login from Console

%Apr 26 12:02:07:306 2000 H3C SHELL/5/SHELL\_LOGIN: Console logged in from aux0.

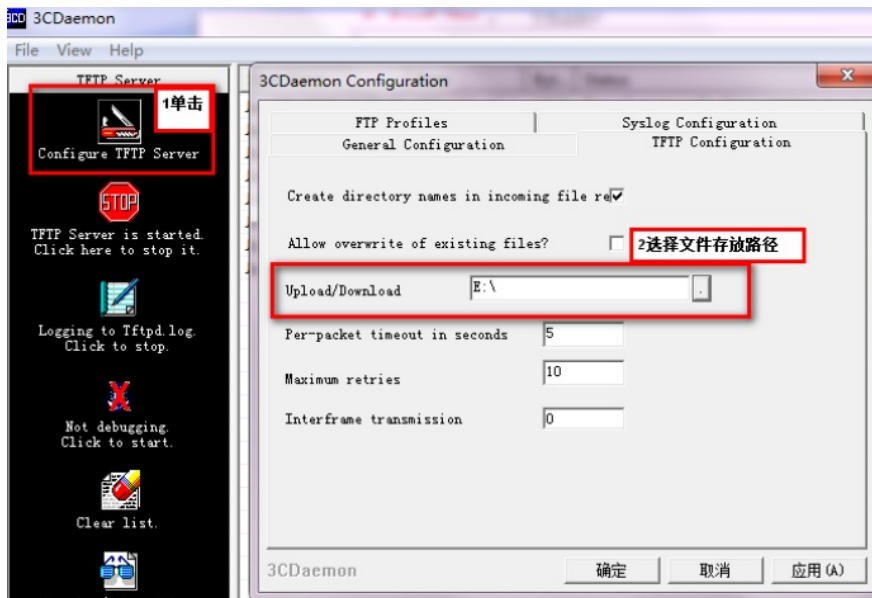
dir %查看设备配置文件

Directory of flash:/

```
1  drw-   - Apr 26 2000 12:00:20  logfile
2  -rw-  1666 Apr 26 2000 12:05:39  startup.cfg
3  -rw-  1556 Apr 26 2000 12:05:33  _startup_bak.cfg
4  -rw-   151 Apr 26 2000 12:05:30  system.xml
```

29106 KB total (16876 KB free)

给设备和电脑配置成同网段IP地址 (举例: WAC配置成192.168.100.1, 电脑配置成192.168.100.2), 在电脑上通过3CD软件搭建tftp服务器。



sys

System View: return to User View with Ctrl+Z.

[H3C]interface Vlan-interface 1

[H3C-Vlan-interface1]ip address 192.168.100.1 24

[H3C-Vlan-interface1]quit

[H3C]ping 192.168.100.2

PING 192.168.100.2: 56 data bytes, press CTRL\_C to break

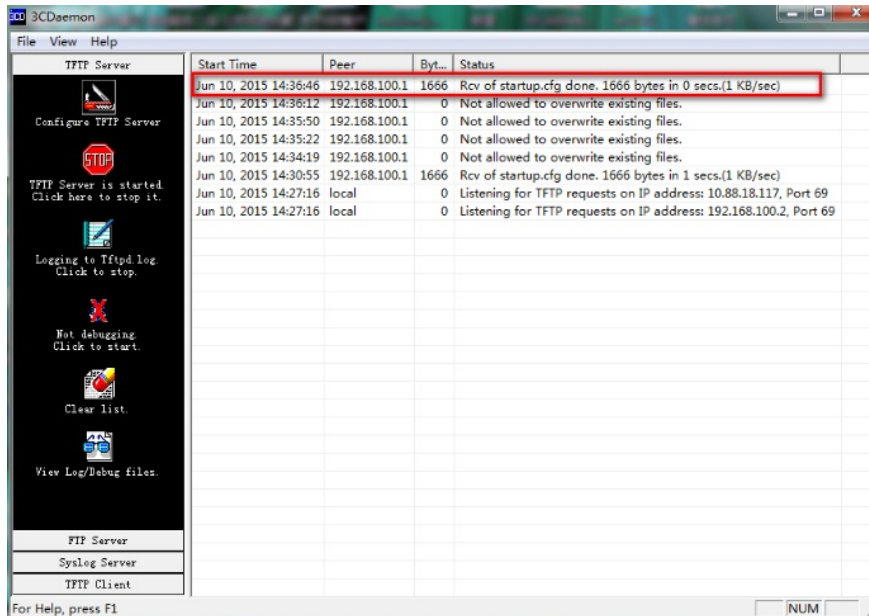
Reply from 192.168.100.2: bytes=56 Sequence=1 ttl=128 time=7 ms

Reply from 192.168.100.2: bytes=56 Sequence=2 ttl=128 time=2 ms

tftp 192.168.100.2 put startup.cfg

File will be transferred in binary mode  
Sending file to remote TFTP server. Please wait... |  
TFTP: 1666 bytes sent in 0 second(s).  
File uploaded successfully.

下载成功:



可以到本地相关路径（此例子中是E盘）查看到相关文件。

需要恢复之前配置

解决方法：删除密码恢复之前配置文件

使用记事本打开startup.cfg文件

```
#  
user-interface aux 0  
authentication-mode password  
set authentication password cipher $c$3  
$e0wip+p/tRA8N3EqNk4ZBycpFSthpBBb4A==  
user-interface vty 0 15  
#
```

删除aux0口下的认证方式和密码并保存文件

```
#  
user-interface aux 0  
user-interface vty 0 15  
#  
return
```

覆盖当前配置文件

tftp 192.168.100.20 get startup.cfg

The file startup.cfg exists. Overwrite it? [Y/N]:y

Verifying server file...

Deleting the old file, please wait...

...

File will be transferred in binary mode

Downloading file from remote TFTP server, please wait....

TFTP: 1166 bytes received in 0 second(s)

File downloaded successfully.

reboot

Start to check configuration with next startup configuration file, please wait.....DONE!

Current configuration may be lost after the reboot, save current configuration? [Y/N]:n 不保存配置

This command will reboot the device. Continue? [Y/N]:y 确定继续重启

配置关键点