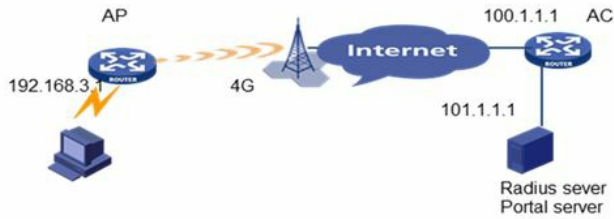


知 LA4320V FIT AP本地Portal典型配置

wlan接入 Portal 樊昊 2015-07-28 发表

LTE-FI AP和AC建立隧道，portal走本地转发。



- 1、配置本地播存和本地内容更新
- 2、配置本地portal
- 3、配置gps上传

AC的配置

配置信任的AAA，接收DM信息

```
radius dynamic-author client trusted ip 102.1.1.1
```

配置DNS

```
dns resolve
```

```
dns proxy enable
```

```
dns server 8.8.8.8
```

配置portal认证

```
portal server test-portal ip 101.1.1.1 url http://101.1.1.1:8088/portal/showlogin.do server-type cmcc
```

//本地portal认证时需要imc和AC进行portal报文的交互

配置free rule 放行到imc等不需要认证的流量

```
portal free-rule 2 source ip any destination ip 172.19.196.254 mask 255.255.255.255
```

```
portal free-rule 4 source interface Bridge-Aggregation1 destination any
```

```
portal free-rule 5 source ip any destination ip 100.1.1.1 mask 255.255.255.255
```

如下free-rule为dns的地址

```
portal free-rule 6 source ip any destination ip 8.8.8.8 mask 255.255.255.255
```

```
portal free-rule 7 source ip any destination ip 211.138.91.2 mask 255.255.255.255
```

```
portal free-rule 8 source ip any destination ip 211.138.91.2 mask 255.255.255.255
```

CMCC在认证过程中需要提供设备的参数

```
portal device-id 0205.0024.240.00
```

```
portal url-param include nas-id
```

```
portal url-param include user-mac des-encrypt param-name wlanparameter
```

```
portal url-param include nas-ip param-name wlanacip
```

```
portal url-param include ap-mac
```

```
portal url-param include user-url
```

Portal在AC上需要和wlan用户联动

```
portal host-check wlan
```

portal用户从wlan用户中得到用户信息

```
wlan client learn-ipaddr enable
```

portal配置认证方案和domain

```
radius scheme test-portal
server-type extended
primary authentication 101.1.1.1
primary accounting 101.1.1.1
key authentication cipher $c$3$fhWNk39b8sZN8iK9eZ2eZAwmzzmywl7e97g=
key accounting cipher $c$3$t1Zq41BdQ/6728SWxNzdSgh3haQiF3NaZDU=
user-name-format without-domain
nas-ip 100.1.1.1
retry stop-accounting 10
```

```
domain test-portal
authentication portal radius-scheme test-portal
authorization portal radius-scheme test-portal
accounting portal radius-scheme test-portal
access-limit disable
state active
idle-cut disable
self-service-url disable
```

为本地portal用户创建模板

```
wlan service-template 10 clear
ssid test-portal
bind WLAN-ESS 10
client max-count 100
user-isolation enable
client forwarding-mode local
authentication-mode local
service-template enable
```

配置ap组

```
wlan ap-group default_group
ap ap1
```

配置用户的vlan接口

```
interface Vlan-interface1 //配置用户的网关，这里使用portal，完成imc和AC的portal交互
description 用户网关
ip address 172.19.196.254 255.255.255.0
dhcp server apply ip-pool gk30
portal server test-portal method direct
portal domain test-portal
portal nas-ip 100.1.1.1
portal forwarding-mode local
```

配置AC的公网地址

```
interface Vlan-interface3322 //AC的公网接口
description 管理地址
ip address 100.1.1.1 255.255.255.248
tcp mss 1400
nat outbound 2000
```

配置AP模板

```
wlan ap ap1 model LA4320V id 5
```

```
description 800公交车
nas-id 1404002424000460
map-configuration 0402ap1.cfg
echo-interval 60
retransmit-count 60
serial-id 219801A0J2M141000200
hybrid-remote-ap enable
client idle-timeout 300
radio 1
  service-template 10
  radio enable
```

AP的配置

以下三个配置需要首先在在AP上手动配置，并且保存到FLASH。

指定AC

```
wlan ac ip 100.1.1.1
```

配置CE接口

```
interface Cellular-Ethernet1/0/1
  link-delay 180
  ip address cellular-allocated
  tcp mss 1400
  dialer enable-circular
  dialer-group 1
  dialer timer idle 0
  dialer timer wait-carrier 20
  dialer timer autodial 10
  dialer number *99# autodial
  nat outbound
  gps mode standalone
  gps nmea
```

配置缺省路由

```
ip route-static 0.0.0.0 0.0.0.0 Cellular-Ethernet1/0/1
```

配置GPS探测的接口

```
network mode probe Cellular-Ethernet1/0/1
```

配置DNS

```
dns resolve
dns proxy enable
dns server 8.8.8.8
```

配置portal，这里的portal主要用于重定向，没有认证的情况下都会重定向到本地首页。

```
portal server testap ip 101.1.1.1 port 2000 url http://192.168.3.1/usb0:/html/html/index.html server-type cmcc
```

配置portal的free-rule

```
portal free-rule 1 source ip any destination ip 100.1.1.1 mask 255.255.255.255
portal free-rule 3 source ip any destination ip 172.19.196.254 mask 255.255.255.255
portal free-rule 5 source ip any destination ip 101.1.1.1 mask 255.255.255.255
portal free-rule 15 source ip any destination ip 192.168.3.1 mask 255.255.255.255
```

配置portal上送的参数

```
portal device-id 0205.0024.240.00
```

```
portal url-param include nas-id
```

```
portal url-param include user-mac param-name wlanparameter
```

```
portal url-param include nas-ip param-name wlanacip
```

```
portal url-param include ap-mac param-name wlanapmac
```

```
portal url-param include user-url param-name wlanuserfirsturl
```

在没有认证通过的时候，始终访问本地页面的首页，在点击“登录公网”后，会推出该网页进行portal认证

```
portal user-url http://211.13.1.1 redirect-url http://101.1.1.1:8088/portal/showlogin.do
```

配置日志回传策略，日志中记录了哪些用户访问了什么本地页面

```
ip http log-file timer aging 3
```

```
ip http log-file upload server 221.180.150.8 port 9021 username report password cipher $c$3$yexOn  
d+aQUyIHxaoZRM8NVzQjn6mu9+TtLvcNMID interval 10
```

配置GPS更新策略

```
ip http gps upload server 221.180.144.234/httpServer interval 5 //???会挂死
```

本地内容更新策略

```
schedule update ftp username down
```

```
schedule update ftp password cipher $c$3$5Cuk1N8mP/3OApkVCZaNSqL+91RUmS7qZBNytCY=
```

```
schedule update work-directory usba0:/html/html/
```

```
schedule update server 221.180.150.8 port 9021
```

```
schedule update source-interface Cellular-Ethernet1/0/1
```

```
schedule update peak-time from 00:00:59 to 04:59:59 delay 10 threads 5
```

```
schedule update off-peak-time from 05:00:59 to 23:59:59 delay 10 threads 5 interval 30
```

根据当前CE接口的制式情况，限制本地内容更新的带宽

```
traffic classifier 4g operator and
```

```
if-match cellular 4g
```

```
traffic classifier 3g operator and
```

```
if-match cellular 3g
```

```
traffic behavior 4g
```

```
car cir 10000 cbs 625000 ebs 0 green pass red discard
```

```
traffic behavior 3g
```

```
car cir 100 cbs 6250 ebs 0 green pass red discard
```

```
qos policy testqos
```

```
classifier 3g behavior 3g
```

```
classifier 4g behavior 4g
```

为本地用户下发地址

```
dhcp server ip-pool testdhcp extended
```

```
network ip range 192.168.3.1 192.168.3.200
```

```
network mask 255.255.255.0
```

```
gateway-list 192.168.3.1
```

```
dns-list 192.168.3.1
```

```
expired day 0 hour 1
```

配置本地portal的接口

```
interface Vlan-interface 1
```

```
ip address 192.168.3.1 255.255.255.0
```

```
dhcp server apply ip-pool testdhcp
```

```
portal server testap method direct
```

```
portal nas-ip 100.1.1.1
```

```
web-redirect track link-status interface Cellular-Ethernet1/0/1
```

由于产品部署，LTE-FI产品一般不接网线，而是走4G网络上行，所以LA4320V部署前，以下三条需要预先配置好，配置好之后要保证插上SIM卡后能够拨号成功，ping外网通，才能进行安装。如果不进行配置，会导致后期维护工作量大大增加。

具体配置如下：

指定AC

```
wlan ac ip 100.1.1.1
```

配置CE接口拨号

```
interface Cellular-Ethernet1/0/1
```

```
link-delay 180
```

```
ip address cellular-allocated
```

```
tcp mss 1400
```

```
dialer enable-circular
```

```
dialer-group 1
```

```
dialer timer idle 0
```

```
dialer timer wait-carrier 20
```

```
dialer timer autodial 10
```

```
dialer number *99# autodial
```

```
nat outbound
```

```
gps mode standalone
```

```
gps nmea
```

配置缺省路由

```
ip route-static 0.0.0.0 0.0.0.0 Cellular-Ethernet1/0/1
```