

## 组网及说明

### 1 配置需求或说明

#### 1.1 适用的产品系列

本案例适用于如2600-6-X1、MSR2600-10-X1、MSR3600-28-X1、MSR3600-28-X1-DP等MSR2600-XX-X1、3610-X1系列的路由器。

注：本案例是在MSR26-30上进行升级到Release 0615P11的版本。

#### 1.2 配置需求及实现的效果

如若设备无法正常进入系统，只能Console登陆设备进行bootrom界面升级版本版本，如果设备能够进入系统，建议参考《命令行升级V7路由器方法》案例。

注：升级过程中不要中途对设备断电！！

### 2 组网图

无

## 配置步骤

### 3 升级步骤

#### 3.1 升级准备

##### 3.1.1 下载需要的版本

#登陆官网www.h3c.com.cn后点击“产品支持与服务”>>“软件下载”



#选择“按产品检索”下的“路由器”



#根据型号选择

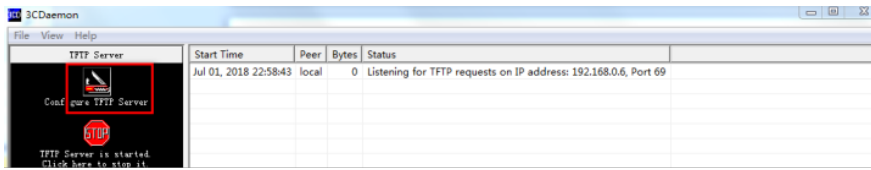
#本案例制作时，已获取MSR26-30的Release 0615P11版本文件

### 3.1.2 在Bootware下通过以太网口利用TFTP导入系统文件

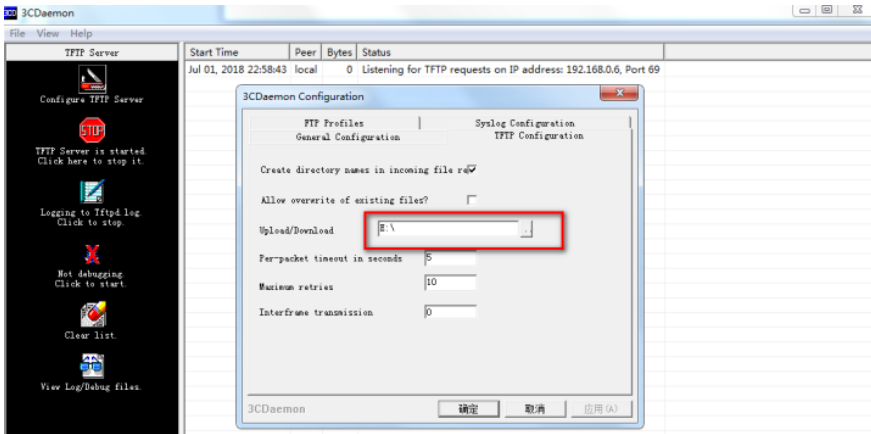


3CDaemon.rar

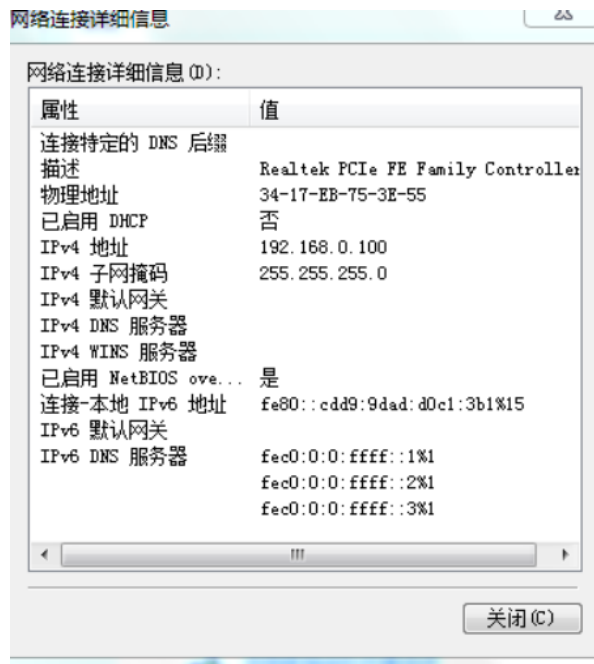
#本案例使用3CD软件，选择TFTP方式导入版本文件（电脑防火墙注意关闭）



#选择需要导入的文件main.ipe文件的路径



#将电脑网线直连管理口0，并设置IP地址。



#Console线如何连接设备，可参考《Console登录设备方法》章节；

#在设备启动过程中，当出现“Press Ctrl+B to enter extended boot menu...”时，立即键入<Ctrl+B>，按下<Enter>键后，系统将进入BootWare主菜单。

System is starting...  
Press Ctrl+D to access BASIC-BOOTWARE MENU...  
Booting Normal Extended BootWare  
The Extended BootWare is self-decompressing...Done.

```
*****
*
*           H3C MSR26-30 BootWare, Version 1.70
*
*****
Copyright (c) 2004-2017 New H3C Technologies Co., Ltd.
```

```
Compiled Date      : Apr 14 2017
CPU ID            : 0x1
Memory Type       : DDR3 SDRAM
Memory Size       : 1024MB
Flash Size        : 2MB
Nand Flash size   : 256MB
CPLD Version      : 2.0
PCB Version       : 3.0
```

BootWare Validating...  
Press Ctrl+B to access EXTENDED-BOOTWARE MENU...

Password recovery capability is enabled.  
Note: The current operating device is flash  
Enter < Storage Device Operation > to select device.

```
===== <EXTENDED-BOOTWARE MENU> =====
|<1> Boot System
|<2> Enter Serial SubMenu
|<3> Enter Ethernet SubMenu
|<4> File Control
|<5> Restore to Factory Default Configuration
|<6> Skip Current System Configuration
|<7> BootWare Operation Menu
|<8> Skip Authentication for Console Login
|<9> Storage Device Operation
|<0> Reboot
=====
```

Ctrl+Z: Access EXTENDED ASSISTANT MENU  
Ctrl+F: Format File System  
Ctrl+C: Display Copyright  
Enter your choice(0-9): 3

#在BootWare主菜单下键入<3>, 可以进入以太网口子菜单, 系统显示如下

```
-----
Enter your choice(0-9) 3
===== <Enter Ethernet SubMenu> =====
|Note:the operating device is flash
|<1> Download Image Program To SDRAM And Run
|<2> Update Main Image File
|<3> Update Backup Image File
|<4> Download Files(*.*)
|<5> Modify Ethernet Parameter
|<0> Exit To Main Menu
|<Ensure The Parameter Be Modified Before Downloading!>
=====
Enter your choice(0-5): █
```

#键入<5>进入以太网口配置菜单

```
Enter your choice(0-5): 5
===== <ETHERNET PARAMETER SET> =====
|Note: '.' = Clear field.
| '.' = Go to previous field.
| Ctrl+D = Quit.
```

```
=====
Protocol (FTP or TFTP) : TFTP (不管看的是什么, 直接输入TFTP, 然后回车)
Load File Name :host main.ipe (不管看的是什么, 直接输入main.ipe, 然后回车)
Target File Name :target main.ipe (不管看的是什么, 直接输入main.ipe, 然后回车)
Server IP Address :192.168.0.10 192.168.0.100 (不管看的是什么, 直接输入电脑主机的 IP, 比如192.168.0.100, 然后回车)
Local IP Address :192.168.0.50 192.168.0.1 (不管看的是什么, 直接输入和电脑主机的ip同一网段, 比如192.168.0.1, 然后回车)
Subnet Mask :0.0.0.0 255.255.255.0 (不管看的是什么, 输入网络掩码, 然后回车)
Gateway IP Address :0.0.0.0 (不管看的是什么, 直接回车)
```

#回到以太网菜单后, 选择<2> 升级主应用程序, 等待版本下载完成



```
=====<Enter Ethernet SubMenu>=====
|Note:the operating device is flash
|<1> Download Image Program To SDRAM And Run
|<2> Update Main Image File
|<3> Update Backup Image File
|<4> Download Files(*.*)
|<5> Modify Ethernet Parameter
|<0> Exit To Main Menu
|<Ensure The Parameter Be Modified Before Downloading!>
=====
Enter your choice(0-5): 0
=====<EXTENDED-BOOTWARE MENU>=====
|<1> Boot System
|<2> Enter Serial SubMenu
|<3> Enter Ethernet SubMenu
|<4> File Control
|<5> Restore to Factory Default Configuration
|<6> Skip Current System Configuration
|<7> BootWare Operation Menu
|<8> Skip Authentication for Console Login
|<9> Storage Device Operation
|<0> Reboot
=====
Ctrl+Z: Access EXTENDED ASSISTANT MENU
Ctrl+C: Display Copyright
Ctrl+F: Format File System
Enter your choice(0-9): 0
System is starting...
Press Ctrl+D to access BASIC-BOOTWARE MENU...
Press Ctrl+T to start heavy memory test.
Booting Normal Extended BootWare
The Extended BootWare is self-decompressing....Done.
```

### 3.3 查看与验证

#设备已能正常启动，就表示版本已正常导入。

```
<H3C>display version
H3C Comware Software, Version 7.1.064, Release 0615P11
Copyright (c) 2004-2018 New H3C Technologies Co., Ltd. All rights reserved.
H3C MSR26-30 uptime is 0 weeks, 0 days, 0 hours, 1 minute
Last reboot reason : User reboot
Boot image: flash:/msr26-cmw710-boot-r0615p11.bin
Boot image version: 7.1.064P63, Release 0615P11
  Compiled May 14 2018 16:00:00
System image: flash:/msr26-cmw710-system-r0615p11.bin
System image version: 7.1.064, Release 0615P11
  Compiled May 14 2018 16:00:00

CPU ID: 0x1
1G bytes DDR3 SDRAM Memory
2M bytes Flash Memory
PCB          Version: 3.0
CPLD         Version: 2.0
Basic   BootWare Version: 1.70
Extended BootWare Version: 1.70
[SLOT 0]AUX                (Hardware)3.0, (Driver)1.0, (CPLD)2.0
[SLOT 0]GE0/0              (Hardware)3.0, (Driver)1.0, (CPLD)2.0
[SLOT 0]GE0/1              (Hardware)3.0, (Driver)1.0, (CPLD)2.0
[SLOT 0]CELLULAR0/0        (Hardware)3.0, (Driver)1.0, (CPLD)2.0
```

#### 配置关键点