

组网及说明

1 配置需求或说明

1.1 适用的产品系列

本案例适用于如F1080、F1070、F5040、F5020等F10X0、F50X0系列的防火墙。
注：本案例是在F100-C-G2上进行升级到Version 7.1.064, Release 9510P08的版本。

1.2 配置需求及实现的效果

根据现场实际需求，需要将防火墙进行升级到新版本。
注：升级过程中不要中途对设备断电！！

2 组网图

无

配置步骤

3 升级步骤

3.1 升级准备

3.1.1 下载需要的版本（请根据自己的型号准确下载版本）

#登陆www.h3c.com.cn后点击“产品支持与服务”>>“软件下载”

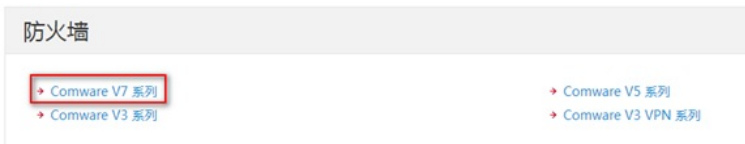


#选择“按产品检索”下的“安全”

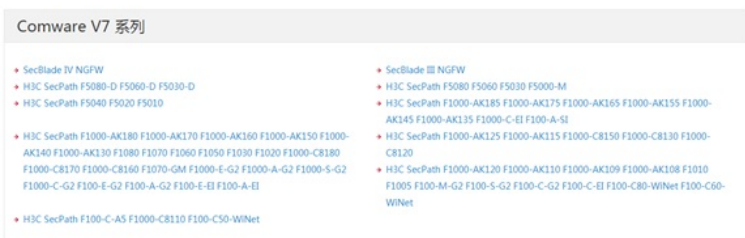
按产品检索



#选择“Comware V7 系列”



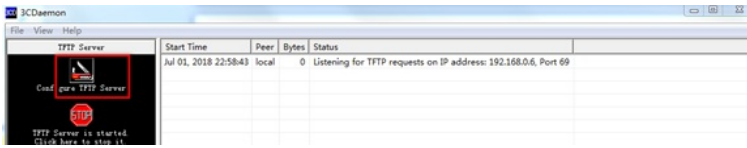
#根据型号选择



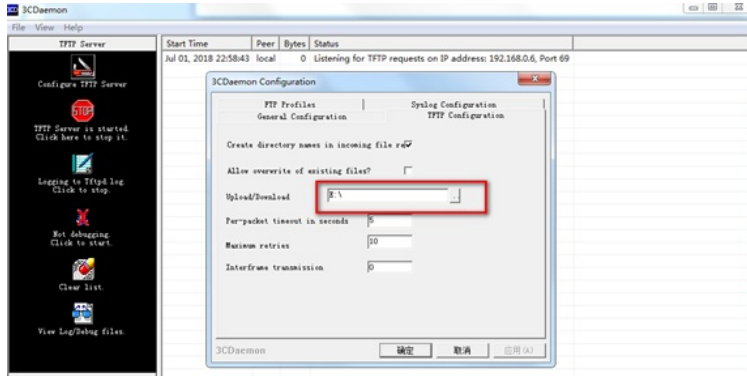
#本案例制作时，已获取F100-C-G2的Release 9510P08版本文件,并将解压出来的ipe文件重命名为mai.n.ipe备用。

3.1.2 命令行登陆设备并将文件上传至设备flash

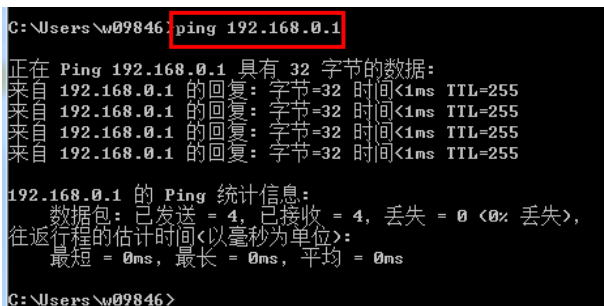
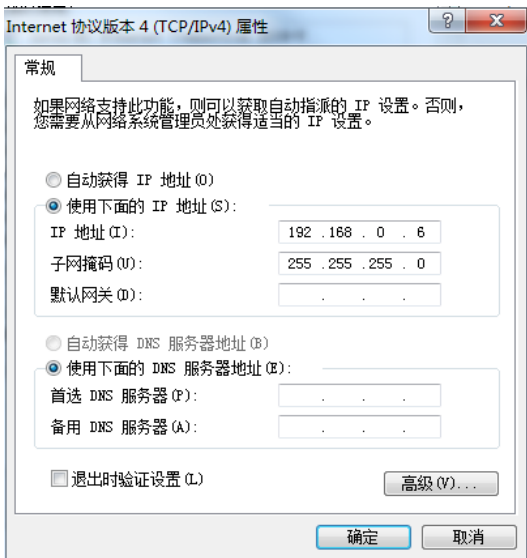
#本案例使用3CD软件，选择TFTP方式上传版本文件（电脑防火墙注意关闭）



#选择您需要导入的文件main.ipe文件的路径



#在设备出厂前，管理口0口的IP地址为192.168.0.1/24。可将电脑直连此接口上，并设置相同网段的IP地址。（本案例电脑直连G0接口，实际组网中也可以使用别的接口，只要确保设备与文件服务器路由可达。）



#在命令行配置界面的任意视图下，执行save命令保存设备当前配置信息：

```
<H3C>save force
```

#在命令行配置界面的用户视图下，执行dir命令查看设备当前的文件系统，确认启动文件及配置文件名，以及Flash的剩余空间，保证Flash有足够空间放入新的启动文件

```
<H3C>dir //查看空余空间够不够，空余空间要大于.IPE文件大小
```

```

<H3C>dir
Directory of flash:
 0 -rw-      2324 Jun 11 2018 18:36:02  2003_local.pfx
 1 -rw-      1258 Jun 11 2018 18:35:21  2003_server.cer
 2 drw-          - Apr 15 2018 13:45:25  diagfile
 3 drw-          - Apr 28 2018 18:56:36  dpi
 4 -rw-      5385216 Jan 13 2018 12:05:39  f1010fw-cmw710-boot-R9510P0601.bin
 5 -rw-      94501888 Jan 13 2018 12:06:25  f1010fw-cmw710-system-R9510P0601.bin
 6 -rw-         735 Apr 15 2018 13:45:48  hostkey
 7 -rw-         338 Jul 01 2018 22:05:40  ifindex.dat
 8 drw-          - Nov 20 2017 21:57:08  license
 9 drw-          - May 07 2018 18:07:35  logfile
10 drw-          - May 07 2018 18:31:44  pkey
11 drw-          - Jun 11 2018 18:36:03  pki
12 drw-          - Apr 15 2018 13:45:25  seclog
13 -rw-         591 Apr 15 2018 13:45:48  serverkey
14 -rw-         3131 Jul 01 2018 22:05:40  startup.cfg
15 -rw-      60997 Jul 01 2018 22:05:41  startup.mdb

```

262144 KB total (163204 KB free)

#在命令行配置界面的用户视图下，执行tftp get命令将启动文件main.ipe导入到设备的Flash中：

```
<H3C>tftp 192.168.0.1 get main.ipe
```

```

<H3C>tftp 192.168.0.6 get main.ipe
Press CTRL+C to abort.
 % Total    % Received % Xferd  Average Speed   Time    Time     Time  Current
                                 Dload  Upload   Total   Spent    Left   Speed
100 96.0M  100 96.0M    0     0  826k      0  0:01:59  0:01:59  --:--:--  820k
Writing file...Done.

```

#查看flash里面有没有导入文件，同时确认一下文件的大小和电脑侧显示一致：

```

<H3C>dir
Directory of flash:
 0 -rw-      2324 Jun 11 2018 18:36:02  2003_local.pfx
 1 -rw-      1258 Jun 11 2018 18:35:21  2003_server.cer
 2 drw-          - Apr 15 2018 13:45:25  diagfile
 3 drw-          - Apr 28 2018 18:56:36  dpi
 4 -rw-      5385216 Jan 13 2018 12:05:39  f1010fw-cmw710-boot-R9510P0601.bin
 5 -rw-      94501888 Jan 13 2018 12:06:25  f1010fw-cmw710-system-R9510P0601.bin
 6 -rw-         735 Apr 15 2018 13:45:48  hostkey
 7 -rw-         338 Jul 01 2018 22:05:40  ifindex.dat
 8 drw-          - Nov 20 2017 21:57:08  license
 9 drw-          - May 07 2018 18:07:35  logfile
10 -rw-     100736000 Jul 02 2018 00:44:24  main.ipe
11 drw-          - May 07 2018 18:31:44  pkey
12 drw-          - Jun 11 2018 18:36:03  pki
13 drw-          - Apr 15 2018 13:45:25  seclog
14 -rw-         591 Apr 15 2018 13:45:48  serverkey
15 -rw-         3131 Jul 01 2018 22:05:40  startup.cfg
16 -rw-      60997 Jul 01 2018 22:05:41  startup.mdb

```

262144 KB total (64696 KB free)

3.2 指定新版本文件作为下次启动文件

#在命令行配置界面的用户视图下，执行boot-loader命令设置设备下次启动使用的启动文件为main.ipe

，并指定启动文件类型为main：

```
<H3C>boot-loader file flash:/main.ipe all main
```

```

<H3C>boot-loader file flash:/main.ipe all main
Verifying the file flash:/main.ipe on slot 1.....Done.
H3C SecPath F100-C-G2 images in IPB:
 f1010fw-cmw710-boot-R9510P08.bin
 f1010fw-cmw710-system-R9510P08.bin
This command will set the main startup software images. Continue? [Y/N]:y
New images to slot 1.
Decompressing file f1010fw-cmw710-boot-R9510P08.bin to flash:/f1010fw-cmw710-boot-R9510P08.bin...Done.
Decompressing file f1010fw-cmw710-system-R9510P08.bin to flash:/f1010fw-cmw710-system-R9510P08.bin.....Done.
.....Done.
Verifying the file flash:/f1010fw-cmw710-boot-R9510P08.bin on slot 1...Done.
Verifying the file flash:/f1010fw-cmw710-system-R9510P08.bin on slot 1.....Done.
The images that have passed all examinations will be used as the main startup software images at the next reboot on slot 1.
Decompression completed.
Do you want to delete flash:/main.ipe now? [Y/N]:y
<H3C>

```

#在命令行配置界面的用户视图下，执行display boot-loader命令查看设备的启动程序文件信息

```

<H3C>display boot-loader
Software images on slot 1:
Current software images:
 flash:/f1010fw-cmw710-boot-R9510P0601.bin
 flash:/f1010fw-cmw710-system-R9510P0601.bin
Main startup software images:
 flash:/f1010fw-cmw710-boot-R9510P08.bin
 flash:/f1010fw-cmw710-system-R9510P08.bin
Backup startup software images:
 None

```

3.3 重启设备完成升级

```

<H3C>reboot
Start to check configuration with next startup configuration file, please wait.....DONE!
Current configuration may be lost after the reboot, save current configuration? [Y/N]:y
Please input the file name(*.cfg) [flash:/startup.cfg]
(To leave the existing filename unchanged, press the enter key):
flash:/startup.cfg exists, overwrite? [Y/N]:y
Validating file. Please wait...
Saved the current configuration to mainboard device successfully.
This command will reboot the device. Continue? [Y/N]:y
Now rebooting, please wait...

```

3.4 查看与验证

#使用dis version查看版本，已经升级到我们下载的版本号即为成功，升级完成。

```
H3C>dis version
H3C Comware Software, Version 7.1.064, Release 9510P08
Copyright (c) 2004-2018 Huawei Technologies Co., Ltd. All rights reserved.
H3C SecPath F100-C-G2 uptime is 0 weeks, 0 days, 0 hours, 5 minutes
Last reboot reason: User reboot

Boot image: flash:/f1010fw-cmw710-boot-R9510P08.bin
Boot image version: 7.1.064, Release 9510P08
  Compiled May 11 2018 16:00:00
System image: flash:/f1010fw-cmw710-system-R9510P08.bin
System image version: 7.1.064, Release 9510P08
  Compiled May 11 2018 16:00:00

SLOT 1
CPU type: Multi-core CPU
DDR3 SDRAM Memory      1008M bytes
Board PCB              Version:Ver.A
Basic BootWare         Version: 2.01
Extend BootWare        Version: 2.01
[SubSlot 0]12GE       (Hardware)Ver.A, (Driver)1.0
```

配置关键点