

组网及说明

将系统的日志信息发送到日志主机；
 将信息等级高于等于information的日志信息将会发送到日志主机上；
 允许输出日志信息的模块为default所有应用模块日志信息。



配置步骤

1. 首先保证日志主机和设备能够路由可达。
- 2.
3. #在SW1上创建vlan 10并配置虚接口IP地址

```

<SW1> system-view
[SW1]vlan 10
[SW1-vlan10]interface vlan 10
[SW1-Vlan-interface10]ip address 10.88.14.209 24
[SW1-Vlan-interface10]quit
    
```

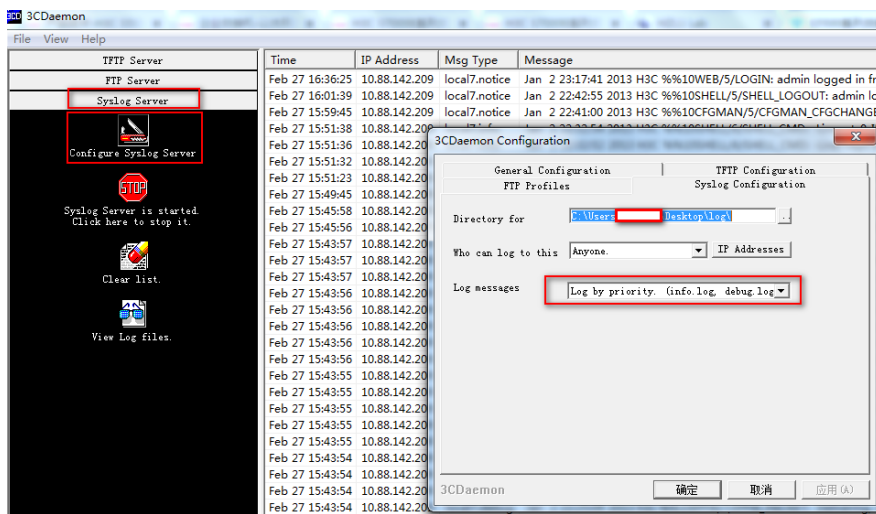
1. 配置日志主机

```

#开启信息中心
[SW1]info-center enable
#配置发送日志信息到IP地址为10.88.14.160的日志主机
[SW1]info-center loghost 10.88.14.160
#配置输出规则：允许DEFAULT所有应用模块、等级高于等于debug的日志信息输出到日志主机。
[SW1]info-center source default loghost level debug
    
```

1. 日志主机上的配置

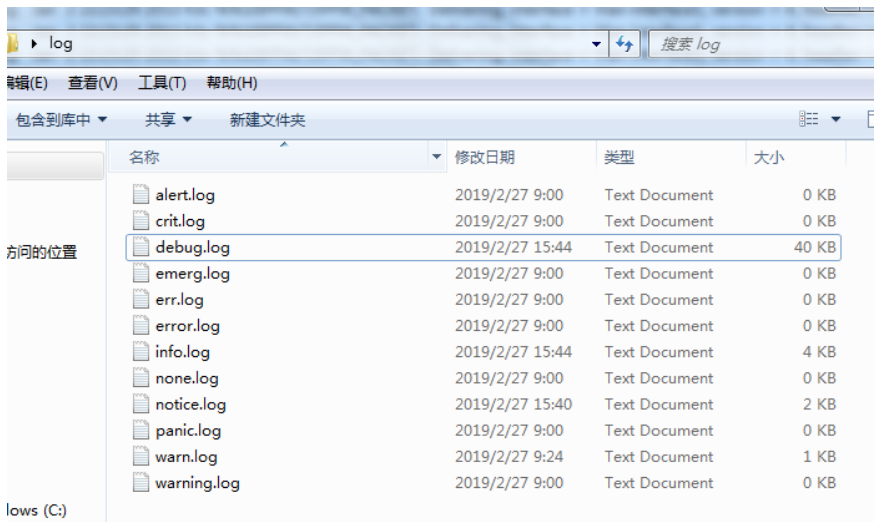
#在日志主机上安装并配置syslog server，这里应用3CDaemon软件为例，操作界面如下图所示，log messages可以根据priority、facility以及ip address将信息记录到不同的文档。



#设备上的日志信息就会被记录下来：

Time	IP Address	Msg Type	Message
Feb 27 16:36:25	10.88.142.209	local7.notice	Jan 2 23:17:41 2013 H3C %%%10WEB/5/LOGIN: admin logged in fro
Feb 27 16:01:39	10.88.142.209	local7.notice	Jan 2 22:42:55 2013 H3C %%%10SHELL/5/SHELL_LOGOUT: admin log
Feb 27 15:59:45	10.88.142.209	local7.notice	Jan 2 22:41:00 2013 H3C %%%10CFGMAN/5/CFGMAN_CFGCHANGE
Feb 27 15:51:38	10.88.142.209		
Feb 27 15:51:36	10.88.142.209		
Feb 27 15:51:32	10.88.142.209		
Feb 27 15:51:23	10.88.142.209		
Feb 27 15:49:45	10.88.142.209		
Feb 27 15:45:58	10.88.142.209		
Feb 27 15:45:56	10.88.142.209		
Feb 27 15:43:57	10.88.142.209		
Feb 27 15:43:57	10.88.142.209		
Feb 27 15:43:57	10.88.142.209		
Feb 27 15:43:56	10.88.142.209		
Feb 27 15:43:56	10.88.142.209		
Feb 27 15:43:56	10.88.142.209		
Feb 27 15:43:56	10.88.142.209		
Feb 27 15:43:55	10.88.142.209		
Feb 27 15:43:55	10.88.142.209		
Feb 27 15:43:55	10.88.142.209		
Feb 27 15:43:55	10.88.142.209		
Feb 27 15:43:55	10.88.142.209		
Feb 27 15:43:54	10.88.142.209		
Feb 27 15:43:54	10.88.142.209		
Feb 27 15:43:54	10.88.142.209		
Feb 27 15:43:54	10.88.142.209		
Feb 27 15:43:54	10.88.142.209		
Feb 27 15:43:54	10.88.142.209		
Feb 27 09:34:25	10.88.142.209	local7.notice	Jan 2 16:15:39 2013 h3c %%%10SHELL/5/SHELL_LOGOUT: admin logged out from 10.88.14.160.
Feb 27 09:29:46	10.88.142.209	local7.notice	Jan 2 16:11:00 2013 h3c %%%10CFGMAN/5/CFGMAN_CFGCHANGED: -EventIndex=12-CommandSource=snmp-ConfigSe
Feb 27 09:24:23	10.88.142.209	local7.info	Jan 2 16:05:37 2013 h3c %%%10SHELL/6/SHELL_CMD: -Line=vt0-IPAddr=10.88.14.160-User=admin; Command is dis th
Feb 27 09:24:20	10.88.142.209	local7.warn	Jan 2 16:05:35 2013 h3c %%%10SHELL/4/SHELL_CMD_MATCHFAIL: -User=admin-IPAddr=10.88.14.160; Command dis t in
Feb 27 09:23:46	10.88.142.209	local7.info	Jan 2 16:05:00 2013 h3c %%%10SHELL/6/SHELL_CMD: -Line=vt0-IPAddr=10.88.14.160-User=admin; Command is info-ce
Feb 27 09:22:59	10.88.142.209	local7.info	Jan 2 16:04:13 2013 h3c %%%10SHELL/6/SHELL_CMD: -Line=vt0-IPAddr=10.88.14.160-User=admin; Command is dis th
Feb 27 09:22:57	10.88.142.209	local7.info	Jan 2 16:04:11 2013 h3c %%%10SHELL/6/SHELL_CMD: -Line=vt0-IPAddr=10.88.14.160-User=admin; Command is info-ce
Feb 27 09:14:51	10.88.142.209	local7.info	Jan 2 15:56:06 2013 h3c %%%10PING/6/PING_STATIS_INFO: Ping statistics for 10.88.14.160: 5 packet(s) transmitted, 5 pac
Feb 27 09:12:41	10.88.142.209	local7.info	Jan 2 15:53:55 2013 h3c %%%10PING/6/PING_STATIS_INFO: Ping statistics for 10.88.14.160: 5 packet(s) transmitted, 5 pac
Feb 27 09:00:16	local	user.info	Listening for Syslog messages on IP address: 10.88.14.160

#日志主机上会生成相应的日志文件：



```

Feb 27 09:29:46 10.88.142.209 Jan 2 16:11:00 2013 h3c %%10CFGMAN/5/CFGMAN_CFGCHAN
Feb 27 09:34:25 10.88.142.209 Jan 2 16:15:39 2013 h3c %%10SHELL/5/SHELL_LOGOUT: a
Feb 27 09:48:04 10.88.142.209 Jan 2 16:29:19 2013 h3c %%10SHELL/5/SHELL_LOGIN: ad
Feb 27 09:49:46 10.88.142.209 Jan 2 16:31:00 2013 h3c %%10CFGMAN/5/CFGMAN_CFGCHAN
Feb 27 09:59:31 10.88.142.209 Jan 2 16:40:45 2013 h3c %%10SHELL/5/SHELL_LOGOUT: a
Feb 27 10:29:43 10.88.142.209 Jan 2 17:10:58 2013 h3c %%10SHELL/5/SHELL_LOGIN: ad
Feb 27 10:39:47 10.88.142.209 Jan 2 17:21:02 2013 h3c %%10SHELL/5/SHELL_LOGOUT: a
Feb 27 13:52:23 10.88.142.209 Jan 2 20:33:38 2013 h3c %%10WEB/5/LOGIN: admin logg
Feb 27 14:02:43 10.88.142.209 Jan 2 20:43:58 2013 h3c %%10WEB/5/LOGOUT: admin log
Feb 27 15:40:31 10.88.142.209 Jan 2 22:21:46 2013 h3c %%10SHELL/5/SHELL_LOGIN: ad
Feb 27 15:49:45 10.88.142.209 Jan 2 22:31:00 2013 h3c %%10CFGMAN/5/CFGMAN_CFGCHAN
Feb 27 15:59:45 10.88.142.209 Jan 2 22:41:00 2013 H3C %%10CFGMAN/5/CFGMAN_CFGCHAN
Feb 27 16:01:39 10.88.142.209 Jan 2 22:42:55 2013 H3C %%10SHELL/5/SHELL_LOGOUT: a
Feb 27 16:36:25 10.88.142.209 Jan 2 23:17:41 2013 H3C %%10WEB/5/LOGIN: admin logg
Feb 27 16:46:35 10.88.142.209 Jan 2 23:27:51 2013 H3C %%10WEB/5/LOGOUT: admin log
Feb 27 16:47:16 10.88.142.209 Jan 2 23:28:32 2013 H3C %%10SHELL/5/SHELL_LOGIN: ad
Feb 27 16:57:18 10.88.142.209 Jan 2 23:38:33 2013 H3C %%10SHELL/5/SHELL_LOGOUT: a
Feb 27 16:59:22 10.88.142.209 Jan 2 23:40:38 2013 H3C %%10SHELL/5/SHELL_LOGIN: ad
Feb 27 17:09:47 10.88.142.209 Jan 2 23:51:03 2013 H3C %%10SHELL/5/SHELL_LOGOUT: a
Feb 27 17:17:15 10.88.142.209 Jan 2 23:58:31 2013 H3C %%10SHELL/5/SHELL_LOGIN: ad
Feb 27 17:27:22 10.88.142.209 Jan 3 00:08:38 2013 H3C %%10SHELL/5/SHELL_LOGOUT: a
Feb 27 17:47:32 10.88.142.209 Jan 3 00:28:48 2013 H3C %%10WEB/5/LOGIN_FAILED: adm
Feb 27 17:47:36 10.88.142.209 Jan 3 00:28:52 2013 H3C %%10WEB/5/LOGIN: admin logg
Feb 27 17:58:16 10.88.142.209 Jan 3 00:39:32 2013 H3C %%10WEB/5/LOGOUT: admin log
Feb 27 18:26:44 10.88.142.209 Jan 3 01:07:59 2013 H3C %%10WEB/5/LOGIN: admin logg
Feb 27 18:32:43 10.88.142.209 Jan 3 01:13:58 2013 H3C %%10SHELL/5/SHELL_LOGIN: ad
Feb 27 18:35:36 10.88.142.209 Jan 3 01:16:51 2013 H3C %%10SHELL/5/SHELL_LOGOUT: a

```

配置关键点