

组网及说明

1.1 适用产品系列

本案例适用于WA53、WA56系列的AP。

配置步骤

1.1.1 AP瘦切胖配置案例 (Bootrom)

操作风险提示: AP瘦切胖有风险, 操作不当或者意外断电会导致设备故障, 操作需谨慎。命令行升级需在PC上搭建TFTP Server (推荐用户使用3CDaemon搭建TFTP服务器)

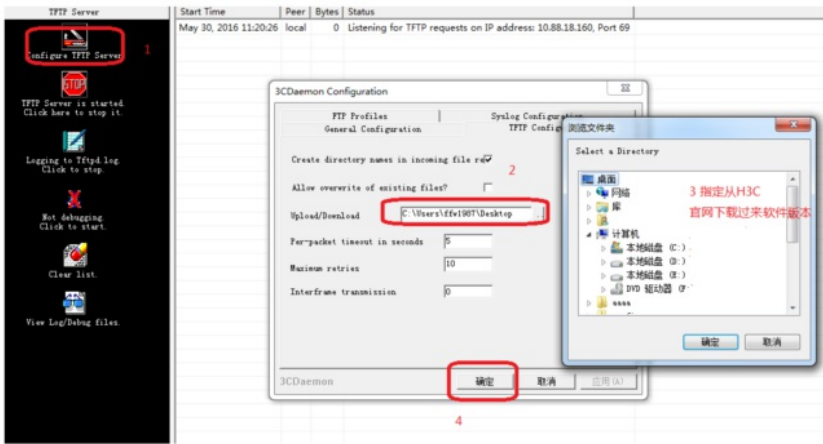
将软件版本下载到设备FLASH内, 然后通过命令行加载Bootrom版本, 再加载主机软件版本, 加载时输入的文件名一定要一致, 建议复制黏贴, 然后升级过程中避免断电重启操作。

1、先从官网下载WA5300的胖版本,

http://www.h3c.com/cn/Service/Document\_Software/Software\_Download/IP\_Wlan/AP/H3C\_WA5300(WA5530\_WA5510E-T\_WA5530-SI\_WA5630X)/

下载压缩包WA5300-CMW710-R2417P01-FAT.zip, 解压生成ipe文件, 放到电脑桌面上。

2、电脑通过网线连接到ap的一个网口, 电脑网卡设置为: 192.168.0.1 255.255.255.0, 如下例子打开TFTP服务器, 把ipe软件版本放到电脑桌面上, TFTP服务器目录指向电脑桌面, 然后点击确定。



3、console口操作, console口登录方法参考《1.03 设备管理-Console登录方法》

在AP重启的时候按住不停地按Ctrl+B进入设备的bootrom菜单, 以下标黑部分为设备自动打印部分

```

.
===== <EXTENDED-BOOTWARE MENU> =====
|<1> Boot System |
|<2> Enter Serial SubMenu |
|<3> Enter Ethernet SubMenu |
|<4> File Control |
|<5> Restore to Factory Default Configuration |
|<6> Skip Current System Configuration |
|<7> BootWare Operation Menu |
|<8> Skip Authentication for Console Login |
|<9> Storage Device Operation |
|<0> Reboot |
=====
=====
Ctrl+Z: Access EXTENDED ASSISTANT MENU
Ctrl+F: Format File System
Ctrl+C: Display Copyright
Ctrl+Y: Change AP Mode
Enter your choice(0-9): 此处按键 Ctrl+F, 作用: 格式化flash
Warning:All files on flash will be lost! Are you sure to format? [Y/N]Y //输入Y
.....
Format success.

===== <EXTENDED-BOOTWARE MENU> =====
|<1> Boot System |
|<2> Enter Serial SubMenu |

```

```
|<3> Enter Ethernet SubMenu          |
|<4> File Control                    |
|<5> Restore to Factory Default Configuration |
|<6> Skip Current System Configuration |
|<7> BootWare Operation Menu        |
|<8> Skip Authentication for Console Login |
|<9> Storage Device Operation        |
|<0> Reboot                          |
```

=====
=====

Ctrl+Z: Access EXTENDED ASSISTANT MENU
Ctrl+F: Format File System
Ctrl+C: Display Copyright
Ctrl+Y: Change AP Mode
Enter your choice(0-9): //按键Ctrl+Y, 设置ap胖模式或者瘦模式

Please select the new mode
Current mode is Fit //提示当前是fit瘦模式

=====
=====

```
|NO. Mode          |
|1 Fat Mode        |
|2 Fit Mode        |
|0 Exit            |
```

=====
=====

Enter your choice(0-2):1 //输入1, 即fat胖模式

Changed to fat mode successfully! //修改成fat胖模式成功

===== <EXTENDED-BOOTWARE MENU> =====

```
|<1> Boot System          |
|<2> Enter Serial SubMenu |
|<3> Enter Ethernet SubMenu |
|<4> File Control        |
|<5> Restore to Factory Default Configuration |
|<6> Skip Current System Configuration |
|<7> BootWare Operation Menu |
|<8> Skip Authentication for Console Login |
|<9> Storage Device Operation |
|<0> Reboot              |
```

=====
=====

Ctrl+Z: Access EXTENDED ASSISTANT MENU
Ctrl+F: Format File System
Ctrl+C: Display Copyright
Ctrl+Y: Change AP Mode
Enter your choice(0-9): 3 //进入以太口子菜单

===== <Enter Ethernet SubMenu> =====

=====

```
|Note:the operating device is flash |
|<1> Download Image Program To SDRAM And Run |
|<2> Update Main Image File |
|<3> Update Backup Image File |
|<4> Download Files(*.*) |
|<5> Modify Ethernet Parameter |
|<0> Exit To Main Menu |
|<Ensure The Parameter Be Modified Before Downloading!> |
```

=====
=====

Enter your choice(0-5): 5 //修改以太口参数

===== <ETHERNET PARAMETER SET > =====

```

|Note:  '.' = Clear field.          |
|      '-' = Go to previous field.  |
|      Ctrl+D = Quit.              |
=====
=====
Protocol (FTP or TFTP) :ftp TFTP
//忽略输出内容, 直接输入TFTP, 然后回车
Load File Name      : WA5300-CMW710-E2329P01-FAT.ipe
//忽略输出内容, 直接输入WA5300-CMW710-E2329P01-FAT.ipe, 然后回车
WA5300-CMW710-E2329P01-FAT.ipe 是胖版本文件名称
Target File Name    : WA5300-CMW710-E2329P01-FAT.ipe
//忽略输出内容, 直接输入WA5300-CMW710-E2329P01-FAT.ipe, 然后回车
WA5300-CMW710-E2329P01-FAT.ipe 是胖版本文件名称
Server IP Address   :192.168.0.1
//忽略输出内容, 直接输入电脑主机的 IP, 比如192.168.0.1, 然后回车
Local IP Address    :192.168.0.50
//忽略输出内容, 直接输入和电脑主机的ip同一网段, 比如192.168.0.50, 然后回车
Gateway IP Address  :0.0.0.0
//忽略输出内容, 直接回车
备注: 注意给电脑手动配置一个与AP同网段的IP地址, 保证电脑与AP路由可达
===== <Enter Ethernet SubMenu> =====
=====

```

```

|Note:the operating device is flash          |
|<1> Download Image Program To SDRAM And Run          |
|<2> Update Main Image File                          |
|<3> Update Backup Image File                        |
|<4> Download Files(*.*)                            |
|<5> Modify Ethernet Parameter                      |
|<0> Exit To Main Menu                              |
|<Ensure The Parameter Be Modified Before Downloading!>          |
=====
=====

```

```

Enter your choice(0-5): 2 //输入2, 更新版本
Loading.....Done.
38265856 bytes downloaded!
Image file wa5300-fat-boot.bin is self-decompressing...
Saving file flash:/wa5300-fat-boot.bin .....Done.
Image file wa5300-fat-system.bin is self-decompressing...
Saving file flash:/wa5300-fat-system.bin .....
Done.

```

```

===== <Enter Ethernet SubMenu> =====
=====
|Note:the operating device is flash          |
|<1> Download Image Program To SDRAM And Run          |
|<2> Update Main Image File                          |
|<3> Update Backup Image File                        |
|<4> Download Files(*.*)                            |
|<5> Modify Ethernet Parameter                      |
|<0> Exit To Main Menu                              |
|<Ensure The Parameter Be Modified Before Downloading!>          |
=====
=====

```

```

Enter your choice(0-5): 0 //输入0, 返回

```

```

===== <EXTENDED-BOOTWARE MENU> =====
|<1> Boot System          |
|<2> Enter Serial SubMenu          |
|<3> Enter Ethernet SubMenu          |
|<4> File Control          |
|<5> Restore to Factory Default Configuration          |
|<6> Skip Current System Configuration          |
|<7> BootWare Operation Menu          |
|<8> Skip Authentication for Console Login          |

```

```
|<9> Storage Device Operation          |
|<0> Reboot                            |
=====
=====
Ctrl+Z: Access EXTENDED ASSISTANT MENU
Ctrl+F: Format File System
Ctrl+C: Display Copyright
Ctrl+Y: Change AP Mode
Enter your choice(0-9): 0 //输入0, 重启AP
System is starting...
设备启动完成
Press ENTER to get started.
<H3C> //升级成功
%Dec 15 18:56:54:395 2017 H3C SHELL/5/SHELL_LOGIN: Console logged in from con0.
建议与总结:
先Ctrl+F格式化flash, 再Ctrl+Y选择胖模式, 最后加载fat版本。
```

配置关键点