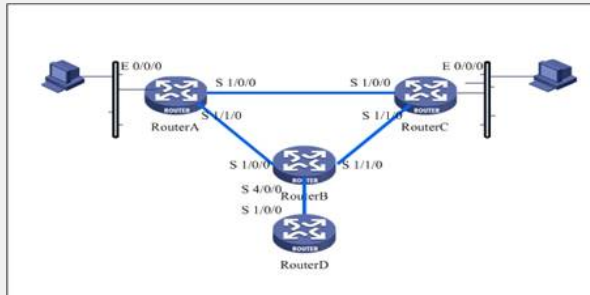


AR28/AR46系列路由器PIM-SM组播模式的典型配置

【需求】

Multicast Source作为组播源，RECEIVER 1和RECEIVER 2是该组播组的两个接收成员。

【组网图】



【配置脚本】

RouterA配置脚本

```
#
sysname RouterA
#
router id 1.1.1.1
#
multicast routing-enable          /开启组播路由功能/
#
radius scheme system
#
domain system
#
acl number 2005
rule 0 permit source 225.0.0.0 0.0.0.255
#
interface Ethernet0/0/0
ip address 10.1.1.1 255.255.255.0
pim sm                            /设置为pim-sm模式/
#
interface Serial1/0/0
link-protocol ppp
ip address 192.168.1.1 255.255.255.252
pim sm                            /设置为pim-sm模式/
#
interface Serial1/1/0
link-protocol ppp
ip address 192.168.2.1 255.255.255.252
pim sm                            /设置为pim-sm模式/
#
interface NULL0
#
interface LoopBack0
ip address 1.1.1.1 255.255.255.255
#
ospf 1
area 0.0.0.0
network 1.1.1.1 0.0.0.0
network 10.1.1.0 0.0.0.255
network 192.168.1.0 0.0.0.3
network 192.168.2.0 0.0.0.3
#
pim
spt-switch-threshold 10 group-policy 2005  /配置候选RP/
#
user-interface con 0
user-interface vty 0 4
#
return
```

RouterB配置脚本

```
#
sysname RouterB
#
router id 1.1.1.2
#
multicast routing-enable          /开启组播路由功能/
#
radius scheme system
#
domain system
#
acl number 2005
rule 0 permit source 225.0.0.0 0.0.0.255
#
interface Serial1/0/0
link-protocol ppp
ip address 192.168.2.2 255.255.255.252
pim sm                            /设置为pim-sm模式/
#
interface Serial1/1/0
link-protocol ppp
ip address 192.168.3.1 255.255.255.252
pim sm                            /设置为pim-sm模式/
#
interface Serial4/0/0
link-protocol ppp
ip address 192.168.4.1 255.255.255.252
pim sm                            /设置为pim-sm模式/
pim bsr-boundary                  /配置PIM边界/
#
interface NULL0
#
interface LoopBack0
ip address 1.1.1.2 255.255.255.255
#
ospf 1
area 0.0.0.0
network 1.1.1.2 0.0.0.0
network 192.168.2.0 0.0.0.3
network 192.168.3.0 0.0.0.3
network 192.168.4.0 0.0.0.3
#
pim
c-bsr Serial1/0/0 30 2            /配置候选BSR/
#
user-interface con 0
user-interface vty 0 4
#
return
```

**RouterC配置脚本**

```
#
sysname RouterC
#
router id 1.1.1.3
#
multicast routing-enable           /开启组播路由功能/
#
radius scheme system
#
domain system
#
interface Ethernet0/0/0
ip address 20.1.1.1 255.255.255.0
pim sm                             /设置为pim-sm模式/
#
interface Serial1/0/0
link-protocol ppp
ip address 192.168.1.2 255.255.252
pim sm                             /设置为pim-sm模式/
#
interface Serial1/1/0
link-protocol ppp
ip address 192.168.3.2 255.255.252
pim sm                             /设置为pim-sm模式/
#
interface NULL0
#
interface LoopBack0
ip address 1.1.1.3 255.255.255.255
#
ospf 1
area 0.0.0.0
network 1.1.1.3 0.0.0.0
network 20.1.1.0 0.0.0.255
network 192.168.1.0 0.0.0.3
network 192.168.3.0 0.0.0.3
#
user-interface con 0
user-interface vty 0 4
#
return
```