

XE200/2000 SIP呼叫功能(分布式)的配置

一、组网需求:

两台语音网关作为SIP用户代理, 通过SIP代理服务器 (XE语音服务器) 进行SIP呼叫, SIP代理服务器通过位置服务器获得被叫信息。

二、组网图:

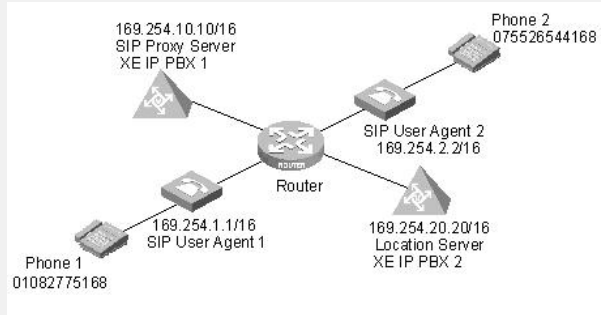


图1-1 SIP用户代理通过代理服务器和位置服务器呼叫组网图

三、配置步骤:

& 说明:

假设SIP User Agent 1、SIP User Agent 2、SIP Proxy Server以及Location Server之间的路由可达, 本例中省略了关于路由方面的配置, 请用户根据自己的网络环境进行配置。

1. 配置SIP User Agent 1

配置以太网接口

```
[VG1] interface ethernet 0/0
```

```
[VG1-Ethernet0/0] ip address 169.254.1.1 255.255.0.0
```

```
[VG1-Ethernet0/0] quit
```

配置语音实体

```
[VG1] voice-setup
```

```
[VG1-voice] dial-program
```

```
[VG1-voice-dial] entity 2222 voip
```

```
[VG1-voice-dial-entity2222] address sip proxy
```

```
[VG1-voice-dial-entity2222] match-template 075526544168
```

```
[VG1-voice-dial-entity2222] quit
```

```
[VG1-voice-dial] entity 1111 pots
```

```
[VG1-voice-dial-entity1111] line 0
```

```
[VG1-voice-dial-entity1111] match-template 01082775168
```

```
[VG1-voice-dial-entity1111] return
```

配置SIP

```
[VG1] voice-setup
```

```
[VG1-voice] sip
```

```
[VG1-voice-sip] sip-server master 169.254.10.10 //SIP代理服务器即process-server的地址
```

```
[VG1-voice-sip] sip-id router1 //SIP代理服务器即process-server的ID
```

```
[VG1-voice-sip] register-enable on
```

2. 配置SIP User Agent 2

配置以太网接口

```
[VG2] interface ethernet 0/0
```

```
[VG2-Ethernet0/0] ip address 169.254.2.2 255.255.0.0
```

```
[VG2-Ethernet0/0] quit
```

配置语音实体

```
[VG2] voice-setup
```

```
[VG2-voice] dial-program
```

```
[VG2-voice-dial] entity 1111 voip
```

```
[VG2-voice-dial-entity1111] address sip proxy
```

```
[VG2-voice-dial-entity1111] match-template 01082775168
```

```
[VG2-voice-dial-entity1111] quit
```

```
[VG2-voice-dial] entity 2222 pots
```

```

[VG2-voice-dial-entity2222] line 0
[VG2-voice-dial-entity2222] match-template 075526544168
[VG2-voice-dial-entity2222] return
# 配置SIP
[VG2] voice-setup
[VG2-voice] sip
[VG2-voice-sip] sip-server master 169.254.10.10
[VG2-voice-sip] sip-id router2
[VG2-voice-sip] register-enable on
3. 配置SIP代理服务器
# 配置以太网接口
[XE1] interface ethernet 0/0
[XE1-Ethernet0/0] ip address 169.254.10.10 255.255.0.0
[XE1-Ethernet0/0] quit
# 配置代理服务器
[XE1] process-server
[XE1-ps] ps-config xe200 interface Ethernet 0/0
[XE1-ps] heartbeat password xe200
[XE1-ps] ls-mode remote ip-address 169.254.20.20 //指定分布式位置服务器的IP地址
[XE1-ps] start
[XE-ps] sip
[XE-ps-sip] start
4. 配置位置服务器
# 配置以太网接口
[XE2] interface ethernet 0/0
[XE2-Ethernet0/0] ip address 169.254.20.20 255.255.0.0
[XE2-Ethernet0/0] quit
# 配置位置服务器
[XE2] location-server
[XE2-ls] ls-config interface Ethernet 0/0
[XE2-ls] call-mode sip routed //配置SIP代理呼叫模式
[XE2-ls] start
[XE2-ls] process-server xe200
[XE2-ls-ps-xe200] ip-address 169.254.10.10 //设置SIP代理服务器即process-server的IP地址
[XE2-ls-ps-xe200] heartbeat password xe200
[XE2-ls] gateway router1
[XE2-ls-gw-router1] device-type sip
[XE2-ls-gw-router1] dynamic-ip enable
[XE2-ls-gw-router1] quit
[XE2-ls] gateway router2
[XE2-ls-gw-router2] device-type sip
[XE2-ls-gw-router2] dynamic-ip enable

```

四、配置关键点:

SIP代理服务器与位置服务器分布式组网时，配置的关键在于分别正确配置对方的IP地址。在SIP代理服务器上（即process-server）用命令ls-mode remote ip-address X.X.X.X，在位置服务器上（即location-server）的LS-PS视图下用命令ip-address X.X.X.X

。