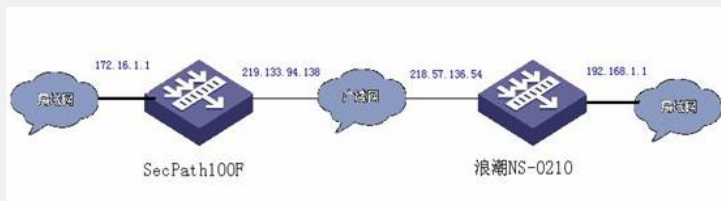


### SecPath100F和浪潮NS-0210防火墙 IPSec互通案例

#### 一、组网需求:

SecPath100F和浪潮NS-0210防火墙做IPSec VPN互通。

#### 二、组网图

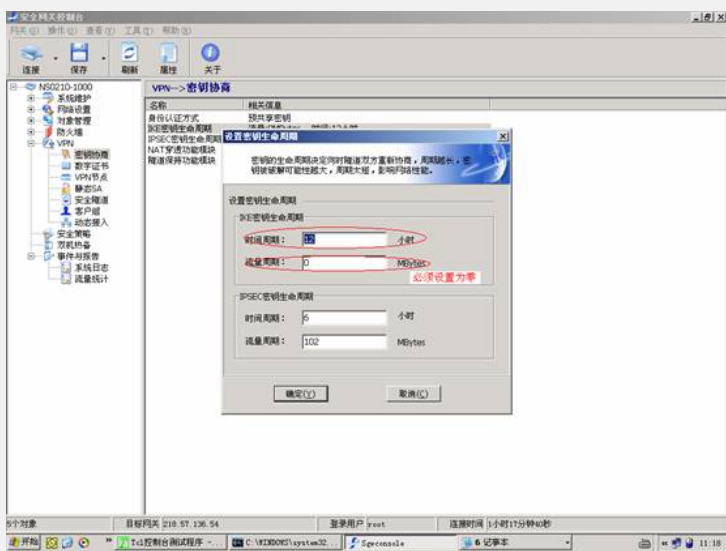


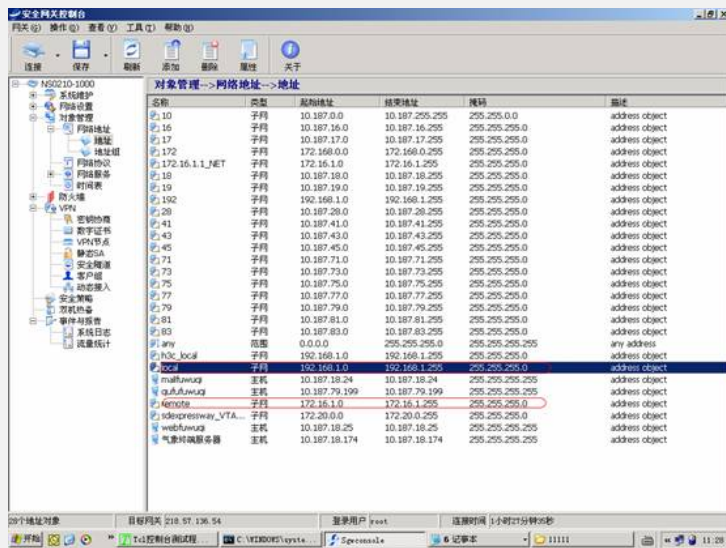
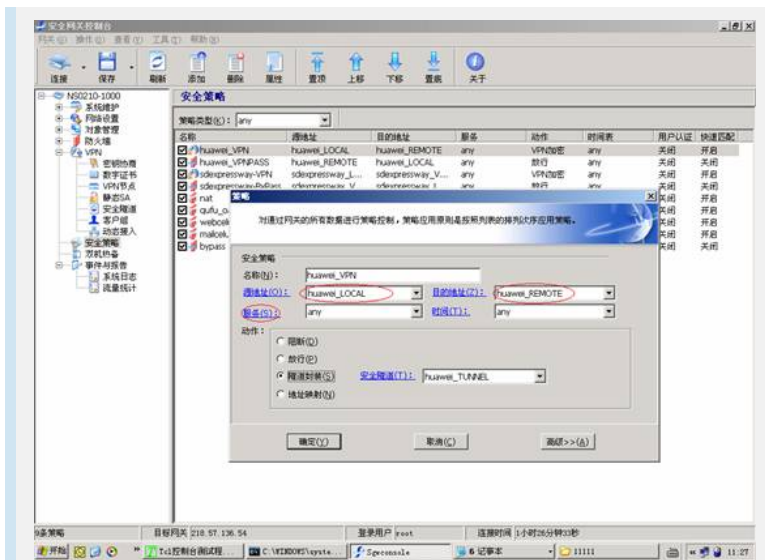
#### 三、配置信息

##### 1. SecPath100F的主要配置

```
ike sa keepalive-timer interval 120
ike proposal 1
dh group2
ike peer 1
pre-shared-key 111111
remote-address 218.57.136.54
local-address 219.133.94.138
ipsec proposal 1
esp authentication-algorithm sha1
ipsec policy policy1 1 isakmp
security acl 3000
pfs dh-group2
ike-peer 1
proposal 1
acl number 3000
rule 0 permit ip source 172.16.1.0 0.0.0.255 destination 192.168.1.0 0.0.0.255
acl number 3001
rule 0 deny ip source 172.16.1.0 0.0.0.255 destination 192.168.1.0 0.0.0.255
rule 1 deny ip
interface Ethernet0/0
ip address 219.133.94.138 255.255.255.0
nat outbound 3001
ipsec policy policy1
interface LoopBack0
ip address 172.16.1.1 255.255.255.0
ip route-static 0.0.0.0 0.0.0.0 219.133.94.129
```

##### 2. 浪潮NS-0210的主要配置





#### 四、配置关键点

- 1、 浪潮防火墙上的流量周期必须设置为零；
- 2、 浪潮防火墙默认IPSEC Proposal和IKE Proposal一致；
- 3、 浪潮防火墙的安全级别的定义：中代表加密为des，验证为sha1；高代表加密为3des，验证为sha1；
- 4、 浪潮防火墙密钥交换采用的是DH-GROUP 2。