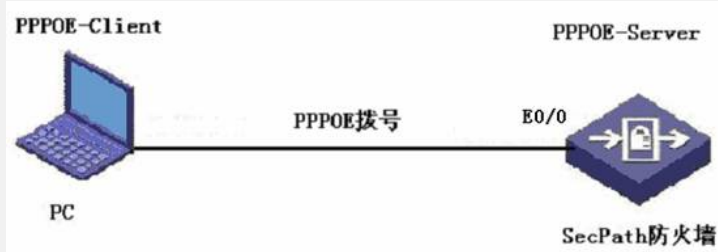


### SecPath防火墙PPPoE-Server的典型配置案例

#### 一、组网需求:

SecPath防火墙做PPPoE-Server的典型配置。

#### 二、组网图



适用于所有版本。

#### 三、配置信息

##### 1. SecPath防火墙的主要配置

###### 定义地址池

domain system

ip pool 1 202.38.1.2 202.38.1.100

###### 创建PPPOE帐号

local-user test

password simple test

service-type ppp

###### 创建虚模板

interface Virtual-Template1

ppp authentication-mode chap

ip address 202.38.1.1 255.255.255.0

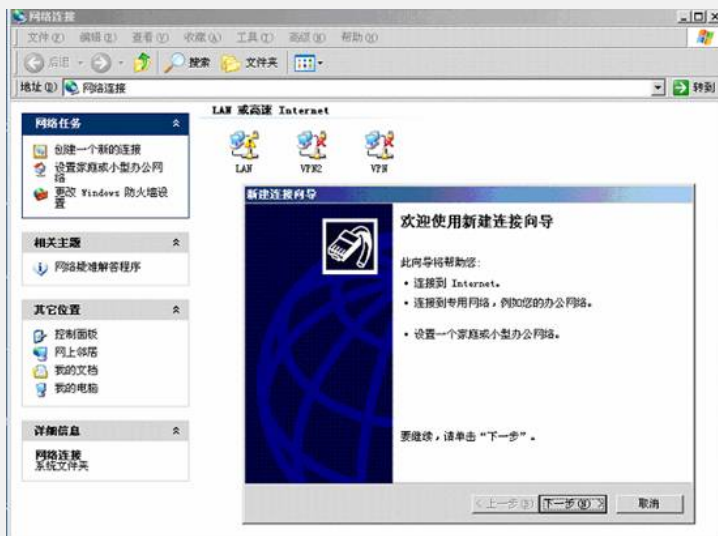
remote address pool 1

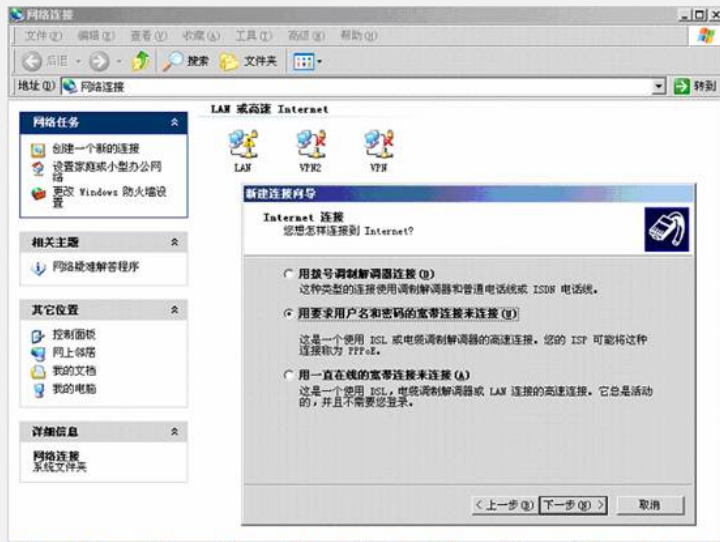
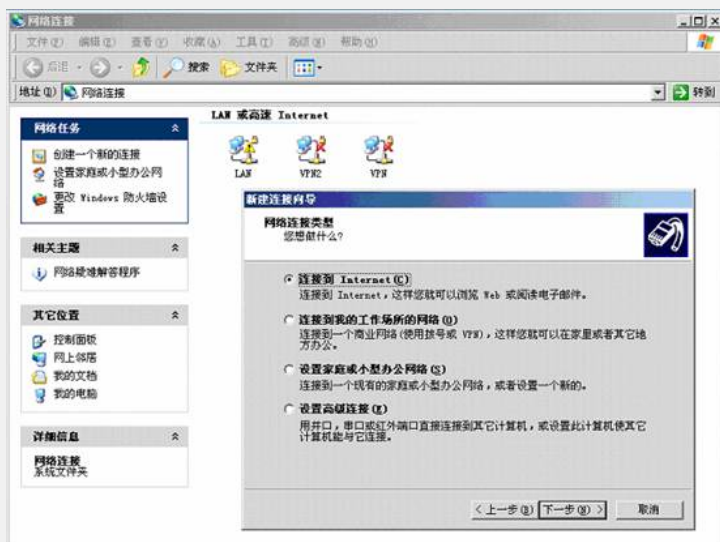
###### 在接口上启用PPPOE-Server

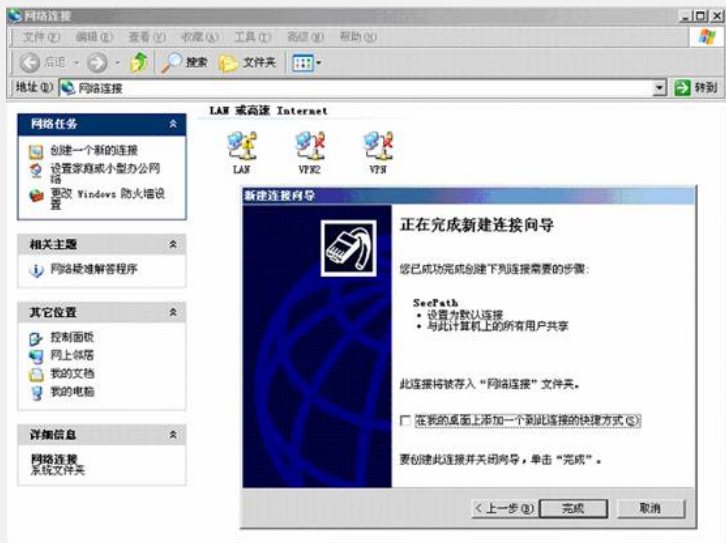
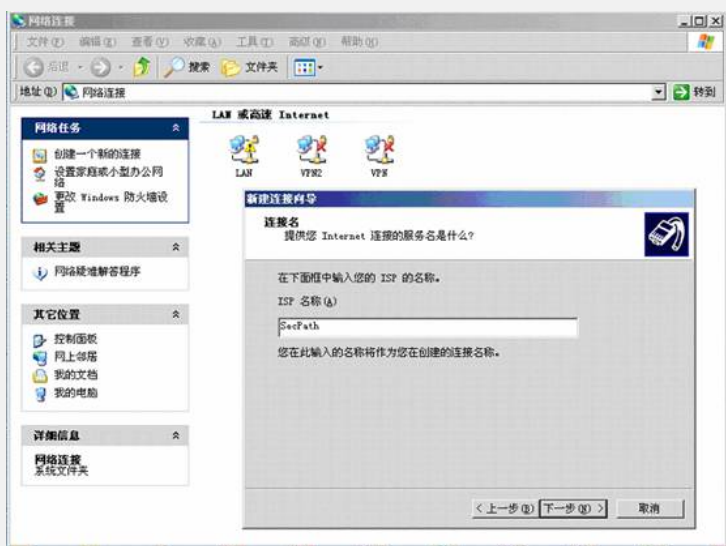
interface Ethernet0/0

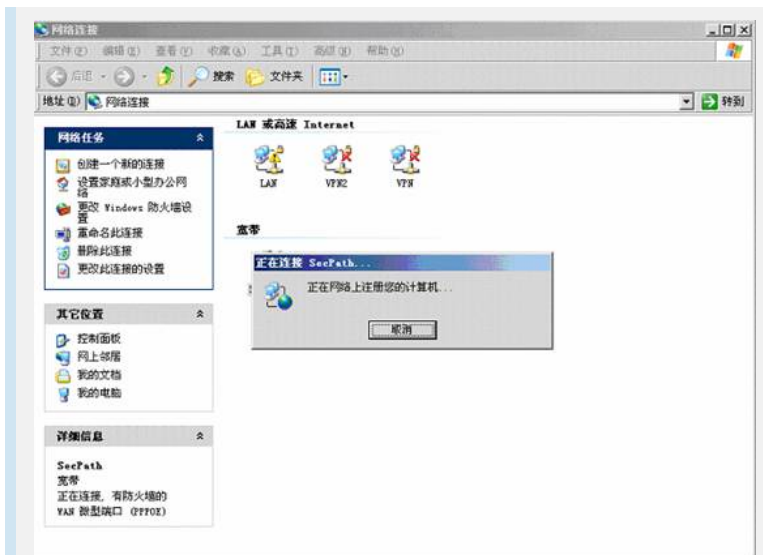
pppoe-server bind Virtual-Template 1

##### 2. PC的主要配置









```
C:\WINDOWS\system32\cmd.exe
C:\Documents and Settings\zhaobiao>ping 202.38.1.1
Pinging 202.38.1.1 with 32 bytes of data:
Reply from 202.38.1.1: bytes=32 time=16ms TTL=255
Ping statistics for 202.38.1.1:
    Packets: Sent = 1, Received = 1, Lost = 0 (0% loss),
    Approximate round trip times in milli-seconds:
        Minimum = 16ms, Maximum = 16ms, Average = 16ms
Control-C
^C
C:\Documents and Settings\zhaobiao>ping 61.139.41.238
Pinging 61.139.41.238 with 32 bytes of data:
Reply from 61.139.41.238: bytes=32 time=14ms TTL=255
Ping statistics for 61.139.41.238:
    Packets: Sent = 1, Received = 1, Lost = 0 (0% loss),
    Approximate round trip times in milli-seconds:
        Minimum = 14ms, Maximum = 14ms, Average = 14ms
Control-C
^C
C:\Documents and Settings\zhaobiao>
```

#### 四、配置关键点

- 1、除了LoopBack接口外，其它所有接口都必须加入到Zone下；
- 2、可以在虚模板下给PPPOE-Client客户指定一个IP地址；
- 3、虚模板下的接口地址可以不同于地址池中的地址。