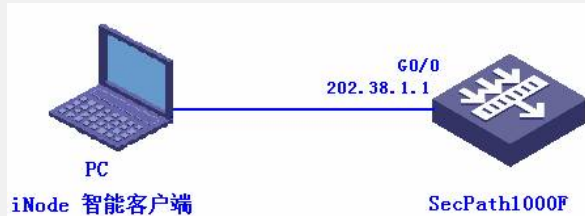


### iNode 智能客户端的典型配置

#### 一、组网需求:

除了SecPoint客户端外, 还可以使用iNode 智能客户端作为L2TP VPN的LAC端。

#### 二、组网图



#### 版本信息:

PC: Windows XP

iNode: V2.40-R0308

SecPath1000F: VRP340-E1604

#### 三、配置信息

##### 1. SecPath1000F的主要配置

使能L2TP

```
l2tp enable
```

配置本端IKE名称

```
ike local-name zhongxin
```

给用户分配地址池

```
domain system
```

```
ip pool 1 172.16.0.10 172.16.0.100
```

创建L2TP帐号

```
local-user zhaobiao
```

```
password simple 123
```

```
service-type ppp
```

配置IKE参数

```
ike peer 1
```

```
exchange-mode aggressive
```

```
pre-shared-key 123456
```

```
id-type name
```

```
remote-name fenzhi
```

```
nat traversal
```

创建安全提议,采用默认参数

```
ipsec proposal 1
```

创建IPSEC模板,并引用IKE和安全提议

```
ipsec policy-template temp 1
```

```
ike-peer 1
```

```
proposal 1
```

创建IPSEC策略

```
ipsec policy policy1 1 isakmp template temp
```

使能L2TP的虚接口

```
interface Virtual-Template1
```

```
ppp authentication-mode chap
```

```
ip address 172.16.0.1 255.255.255.0
```

```
remote address pool 1
```

配置外网口

```
interface GigabitEthernet0/0
```

```
ip address 202.38.1.1 255.255.255.0
```

```
ipsec policy policy1
```

将接口加入到区域

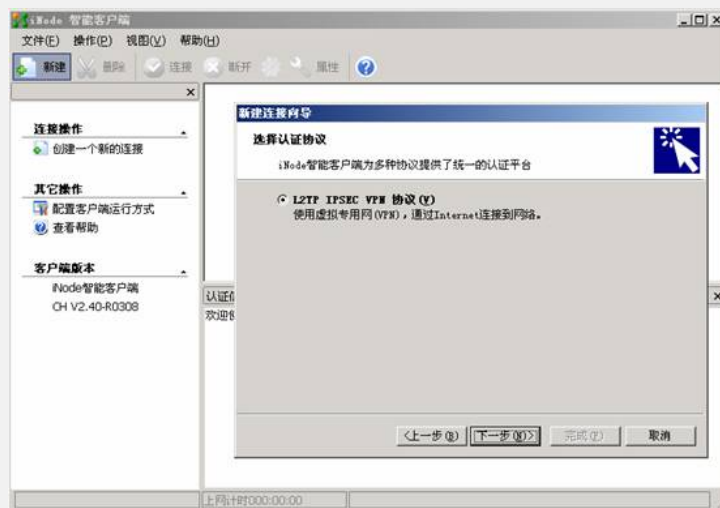
```
firewall zone untrust
```

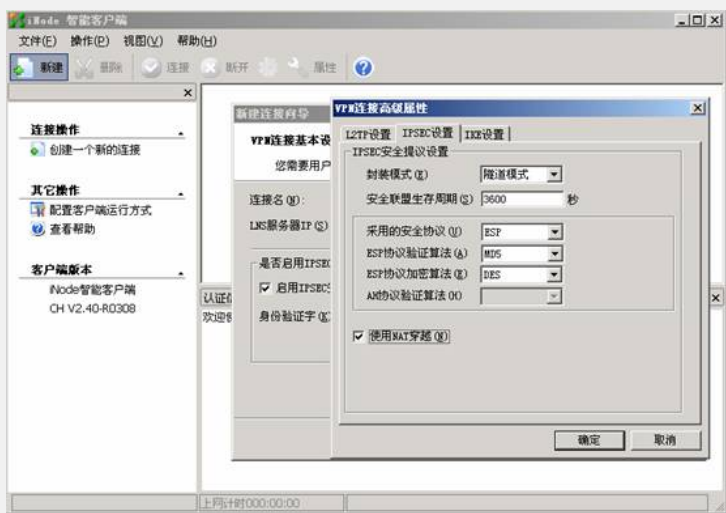
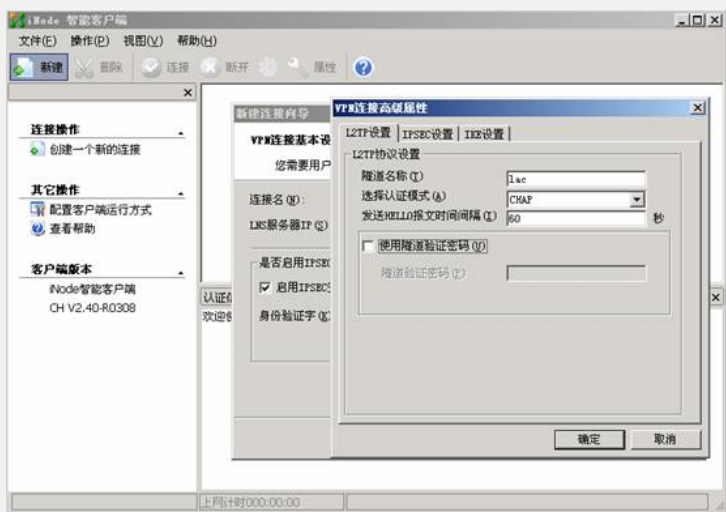
```
add interface GigabitEthernet0/0
```

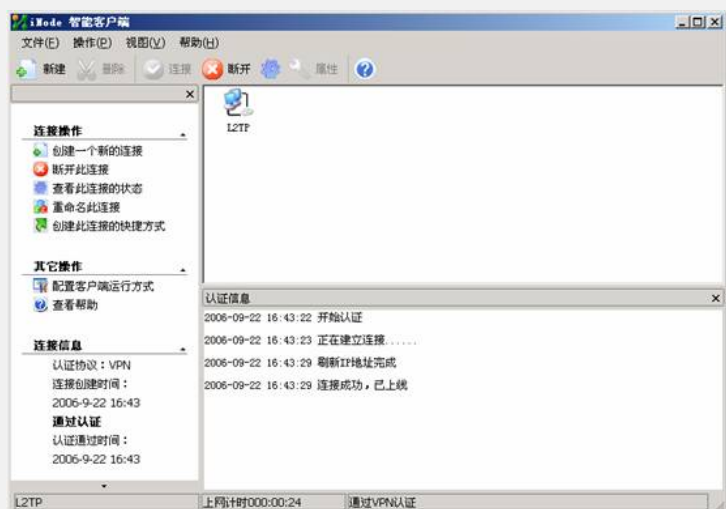
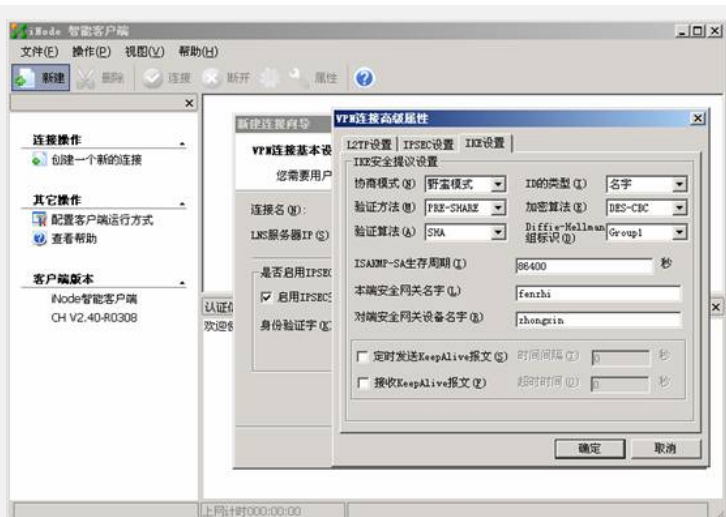
```
add interface Virtual-Template1
```

```
set priority 5
创建L2TP组
l2tp-group 1
undo tunnel authentication
allow l2tp virtual-template 1
配置默认路由
ip route-static 0.0.0.0 0.0.0.0 202.38.1.2
```

## 2. iNode 智能客户端的主要配置







#### 四、配置关键点

见配置信息。