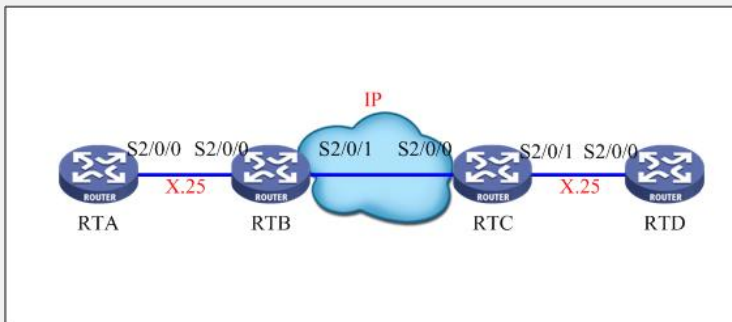


### AR系列路由器XOT的典型配置

#### 【需求】

路由器A和路由器D为X.25终端设备，接入到X.25交换路由器B和路由器C，在它们之间建立TCP连接，通过TCP连接传送X.25报文。

#### 【组网图】



#### 【配置脚本】

##### RTA配置脚本

```
#
sysname RTA
#
radius scheme system
#
domain system
#
interface Serial2/0/0
link-protocol x25
x25 x121-address 1111 /配置本地x121地址/
x25 map ip 1.1.1.2 x121-address 2222 /配置到RTD的静态地址映射/
ip address 1.1.1.1 255.255.255.0
#
interface NULL0
#
user-interface con 0
user-interface vty 0 4
#
return
```

##### RTB配置脚本

```
#
sysname RTB
#
x25 switching /使能X25交换/
#
radius scheme system
#
domain system
#
interface Serial2/0/0
link-protocol x25 dce /配置X25工作模式为DCE/
#
interface Serial2/0/1
link-protocol ppp
ip address 10.1.1.1 255.255.255.0
#
interface NULL0
#
x25 switch svc 2222 xot 10.1.1.2 /配置X25的XOT交换/
x25 switch svc 1111 interface Serial2/0/0 /配置X25的本地交换/
#
user-interface con 0
user-interface vty 0 4
#
return
```

##### RTC配置脚本

```

#
sysname RTC
#
x25 switching          /使能X25交换/
#
radius scheme system
#
domain system
#
interface Serial2/0/0
link-protocol ppp
ip address 10.1.1.2 255.255.255.0
#
interface Serial2/0/1
link-protocol x25 dce    /配置X25工作模式为DCE/
#
interface NULL0
#
x25 switch svc 2222 interface Serial2/0/1 /配置X25的本地交换/
x25 switch svc 1111 xot 10.1.1.1    /配置X25的XOT交换/
#
user-interface con 0
user-interface vty 0 4
#
return

```

#### RTD配置脚本

```

#
sysname RTD
#
radius scheme system
#
domain system
#
interface Serial2/0/0
link-protocol x25
x25 x121-address 2222    /配置本地x121地址/
x25 map ip 1.1.1.1 x121-address 1111    /配置到RTA的静态地址映射/
ip address 1.1.1.2 255.255.255.0
#
interface NULL0
#
user-interface con 0
user-interface vty 0 4
#
return

```

#### 【验证】

RTA上的X25 vc信息：

```

<RTA>disp x25 vc
Interface: Serial2/0/0
SVC 1
State: P4(transmit)
Map: ip 1.1.1.2 to 2222
Window size: input 2 output 2
Packet Size: input 128 output 128
Local PS: 5 Local PR: 5 Remote PS: 5 Remote PR: 4
Local Busy: FALSE Reset times: 0
Input/Output:
DATA 5/5 INTERRUPT 0/0
RR 0/0 RNR 0/0 REJ 0/0
Bytes 420/420
Send Queue(Current/Max): 0/200

```

RTB上的X25 XOT信息：

```

[RTB]disp x25 xot
SVC 1024: ( ESTAB )
tcp peer ip: 10.1.1.2, peer port: 1025
tcp local ip: 10.1.1.1, local port: 1998
XoT interface name: Serial2/0/0-10.1.1.2
X25 interface name: Serial2/0/0

```

RTB上的X25 交换表信息：

```

[RTB]disp x25 switch-table svc dynamic
#1 (In: Serial2/0/0-10.1.1.2 - SVC1024) <-> (Out: Serial2/0/0 - SVC1 )
[RTB]disp x25 switch-table svc sta
Number Destination Substitute-src Substitute-dst CUD SwitchTo(type/name)

```

|   |      |               |
|---|------|---------------|
| 1 | 2222 | T/10.1.1.2    |
| 2 | 1111 | I/Serial2/0/0 |

Total of static svc is 2.

The item type of SwitchTo meaning:

I: interface H: hunt-group T: xot