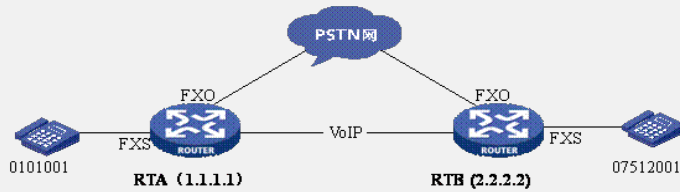


VOIP中PSTN备份IP选路典型配置

一、组网需求

用户用VoIP跑IP电话业务，客户希望在VoIP链路down掉的时候能自动切换到PSTN网络进行正常电话通讯。

二、组网图：



三、基本思路

是先匹配VoIP语音实体，再匹配POTS语音实体。即对于某被叫号码，先匹配VoIP语音实体，当VoIP语音实体定义的对端语音网关不可达（网络层不通）时，则继续根据相同被叫号码寻找POTS语音实体进行匹配。

四、配置步骤：

RTA配置脚本

```
#
sysname RT1
#
local-user admin
password cipher .]@USE=B,53Q=^Q`MAF4<1!!
service-type telnet terminal
level 3
service-type ftp
#
interface Serial1/1
link-protocol ppp
ip address 1.1.1.1 255.255.255.252
#
voice-setup
#
aaa-client
#
dial-program
select-rule type-first 2 1 3
#
entity 751 voip //voip实体
match-template 07512001
address ip 2.2.2.2
#
entity 1001 pots
match-template 0101001
line 2/0
#
entity 1426 pots //配置相同号码的POTS实体
match-template 07512001
line 3/1
priority 10 //更改优先级
send-number all
#
gk-client
#
sip
#
subscriber-line 2/0
#
subscriber-line 2/1
#
subscriber-line 3/0
#
subscriber-line 3/1
#
ip route-static 0.0.0.0 0.0.0.0 2.2.2.2 preference 60
ip route-static 2.2.2.0 255.255.255.0 Serial 1/1 preference 60
#
return
```

RTB配置脚本

```
#
sysname RT2
#
interface Serial3/1
clock DTECLK1
link-protocol ppp
ip address 2.2.2.2 255.255.255.252
#
voice-setup
#
aaa-client
#
dial-program
#
entity 10 voip //VOIP实体
match-template 0101001
address ip 1.1.1.1
#
entity 2001 pots
match-template 07512001
line 2/0
entity 1426 pots //配置相同号码的POTS实体
match-template 0101001
line 3/1
priority 10 //更改优先级
send-number all
#
gk-client
#
sip
#
subscriber-line 2/0
#
subscriber-line 2/1
#
subscriber-line 3/0
#
subscriber-line 3/1
#
FTP server enable
#
ip route-static 0.0.0.0 0.0.0.0 Serial 3/1 1.1.1.1 preference 60
#
return
```