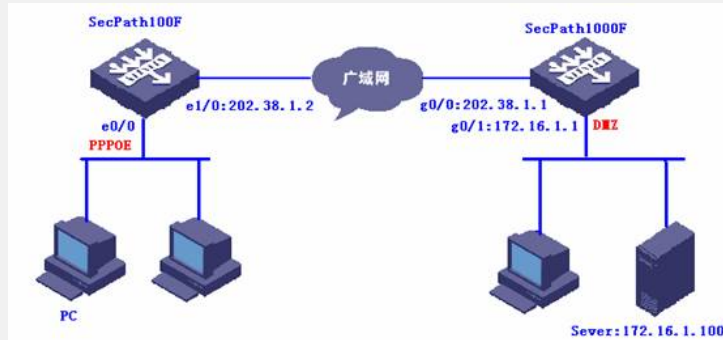


SecPath防火墙PPPoE Server典型配置

一、组网需求:

PC通过PPPOE拨号上网, 公司内部WEB服务器、邮件服务器和FTP服务器需要映射到公网。

二、组网图



SecPath1000F: 版本为Version 3.40, ESS 1604P01;
SecPath100F: 版本为Version 3.40, Release 1210P01;
Server: Windows 2003, 安装了WEB、MAIL和FTP服务;
PC: Windows XP, PPPOE-Client.

三、配置步骤

1. SecPath1000F的主要配置

```
#  
sysname Company  
#  
firewall packet-filter enable  
firewall packet-filter default permit  
#  
interface GigabitEthernet0/0  
ip address 202.38.1.1 255.255.255.0  
//配置NAT Server  
nat server protocol tcp global 202.38.1.100 www inside 172.16.1.100 www  
nat server protocol tcp global 202.38.1.100 ftp inside 172.16.1.100 ftp  
nat server protocol tcp global 202.38.1.100 pop3 inside 172.16.1.100 pop3  
nat server protocol tcp global 202.38.1.100 smtp inside 172.16.1.100 smtp  
#  
interface GigabitEthernet0/1  
ip address 172.16.1.1 255.255.255.0  
#  
firewall zone untrust  
add interface GigabitEthernet0/0  
set priority 5  
#  
firewall zone DMZ  
add interface GigabitEthernet0/1  
set priority 50  
#  
ip route-static 0.0.0.0 0.0.0.0 202.38.1.2 //配置默认路由  
#
```

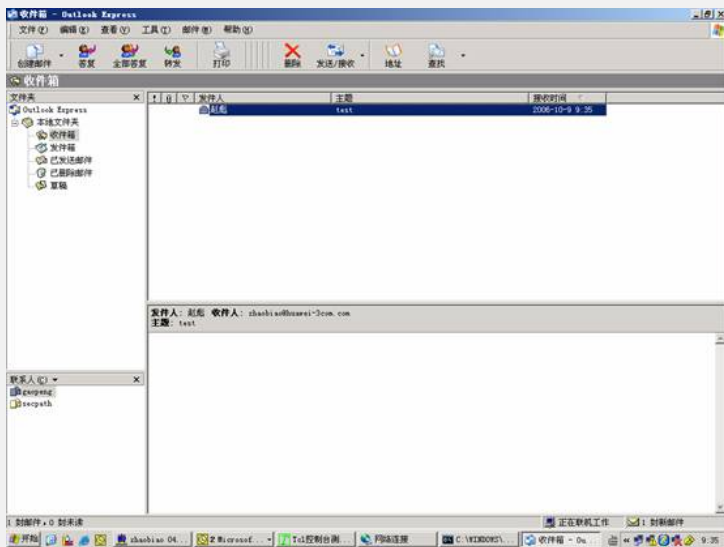
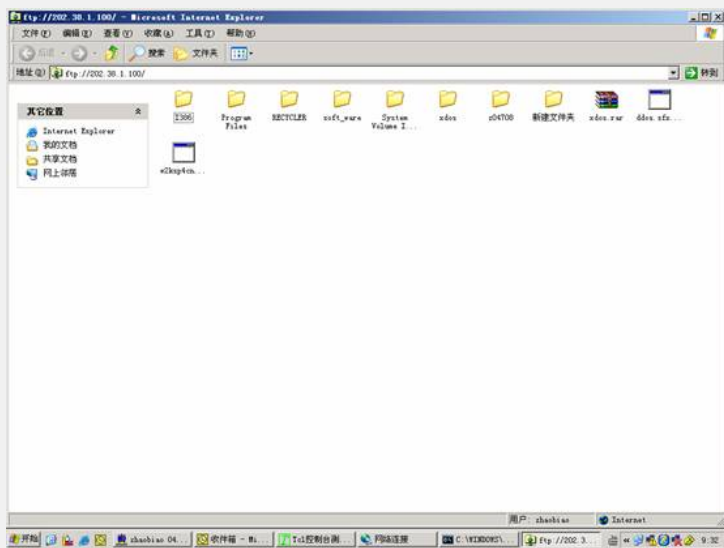
2. SecPath100F的主要配置

```
#  
sysname ISP  
#  
firewall packet-filter enable
```

```
firewall packet-filter default permit
#
domain system //定义地址池
ip pool 1 210.222.34.10 210.222.34.20
#
local-user zhaobiao //创建PPPOE帐号
password simple 123
service-type ppp
#
acl number 2000
rule 0 permit
#
interface Virtual-Template1 //创建虚模板
ppp authentication-mode chap
ip address 210.222.34.1 255.255.255.0
remote address pool 1
#
interface Ethernet0/0 //配置PPPOE-Server
pppoe-server bind Virtual-Template 1
#
interface Ethernet1/0
ip address 202.38.1.2 255.255.255.0
nat outbound 2000
#
firewall zone untrust
add interface Ethernet0/0
add interface Ethernet1/0
add interface Virtual-Template1
set priority 5
#
ip route-static 0.0.0.0 0.0.0.0 202.38.1.1 //配置默认路由
#
```

3. PC的配置和验证





四、配置关键点

见注释。