

知 The configuration of POE on S5600 switches

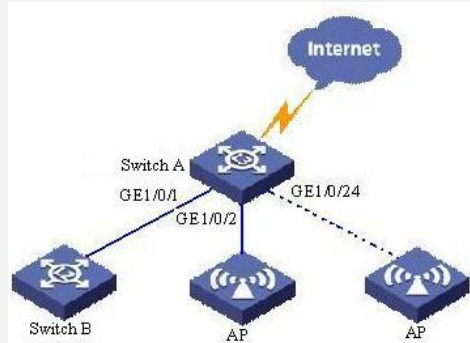
董亮 2007-08-09 发表

The configuration of POE on S5600 switches

I Requirement for the diagram

1. Port GigabitEthernet1/0/1 of Switch A connect to Switch B. Port GigabitEthernet1/0/2 of Switch A connect to AP. Port GigabitEthernet1/0/24 will connect to an important AP;
2. All AP need max power is 2500 milliwatt, power of Switch B is 12000 milliwatt;
3. when Switch A work under max load, the AP which port GigabitEthernet1/0/24 of Switch A connect to should be higher priority than any other AP.

II Network topology



III Steps of configuration

1. enable poe function of port GigabitEthernet1/0/1、GigabitEthernet1/0/2and GigabitEthernet1/0/24

```
[Switch] interface GigabitEthernet 1/0/1
```

```
[Switch-GigabitEthernet1/0/1] poe enable
```

```
[Switch-GigabitEthernet1/0/1] quit
```

```
[Switch] interface GigabitEthernet 1/0/2
```

```
[Switch-GigabitEthernet1/0/2] poe enable
```

```
[Switch-GigabitEthernet1/0/2] quit
```

```
[Switch] interface GigabitEthernet 1/0/24
```

```
[Switch-GigabitEthernet1/0/24] poe enable
```

```
[Switch-GigabitEthernet1/0/24] quit
```

2. Set the max power of GigabitEthernet1/0/1 is 12000 milliwatt, Set the max power of GigabitEthernet1/0/2 is 2500 milliwatt

```
[Switch] interface GigabitEthernet 1/0/1
```

```
[Switch-GigabitEthernet1/0/1] poe max-power 12000
```

```
[Switch-GigabitEthernet1/0/1] quit
```

```
[Switch] interface GigabitEthernet 1/0/2
```

```
[Switch-GigabitEthernet1/0/2] poe max-power 2500
```

```
[Switch-GigabitEthernet1/0/2] quit
```

3. Set priority of port GigabitEthernet1/0/24 is critical, to make sure port GigabitEthernet1/0/24 should power supply at the first place.

```
[Switch] interface GigabitEthernet 1/0/24
```

```
[Switch-GigabitEthernet1/0/24] poe priority critical
```

```
[Switch-GigabitEthernet1/0/24] quit
```

4. Set mode of power supply management is auto

```
[Switch] poe power-management auto
```

5. Enable compatibility detection to power supply to some PD fall short of 802.3af

```
[Switch] poe legacy enable
```

IV Key notes in the configuration

None.