

知 The configuration of POE Profile on S5600 switches

董亮 2007-08-13 发表

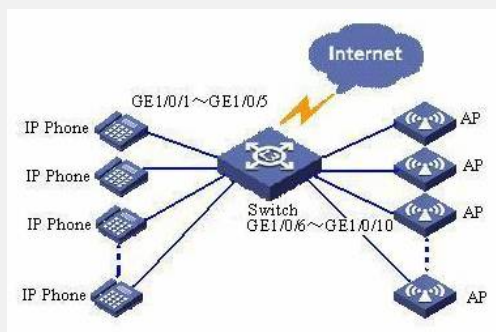
The configuration of POE Profile on S5600 switches

I Requirement for the diagram

Ports GigabitEthernet1/0/1~GigabitEthernet1/0/10 of S5600 are used,the requirement as follow:

1. Enable Poe on all ports;
2. Power apply by signal line;
3. Priority of port GigabitEthernet1/0/1 ~ GigabitEthernet1/0/5 is Critical, priority of port GigabitEthernet1/0/6 ~ GigabitEthernet1/0/10 is High;
4. The max power of port GigabitEthernet1/0/1 ~ GigabitEthernet1/0/5 need is 3000 mw,the max power of port GigabitEthernet1/0/6~ GigabitEthernet1/0/10 need is 15400mw;
5. Finish it by POE Profile.

II Network topology



III Steps of configuration

1. Create Profile1 and go into PoE Profile view
<Switch> system-view
[Switch] poe-profile Profile1
2. Create policy for port GigabitEthernet1/0/1 ~ GigabitEthernet1/0/5 in Profile1
[Switch-poe-profile-Profile1] poe enable
[Switch-poe-profile-Profile1] poe mode signal
[Switch-poe-profile-Profile1] poe priority critical
[Switch-poe-profile-Profile1] poe max-power 3000
[Switch-poe-profile-Profile1] quit
3. Create Profile2 and go into PoE Profile view
[Switch] poe-profile Profile2
4. Create policy for port GigabitEthernet1/0/6 ~ GigabitEthernet1/0/10 in Profile2
[Switch-poe-profile-Profile2] poe enable
[Switch-poe-profile-Profile2] poe mode signal
[Switch-poe-profile-Profile2] poe priority high
[Switch-poe-profile-Profile2] poe max-power 15400
[Switch-poe-profile-Profile2] quit
5. Apply policy Profile1 to port GigabitEthernet1/0/1 ~ GigabitEthernet1/0/5
[Switch] apply poe-profile profile1 interface GigabitEthernet1/0/1 to GigabitEthernet1/0/5
6. Apply policy Profile2 to port GigabitEthernet1/0/6 ~ GigabitEthernet1/0/10
[Switch] apply poe-profile profile1 interface GigabitEthernet1/0/6 to GigabitEthernet1/0/10

IV Key notes in the configuration

None.