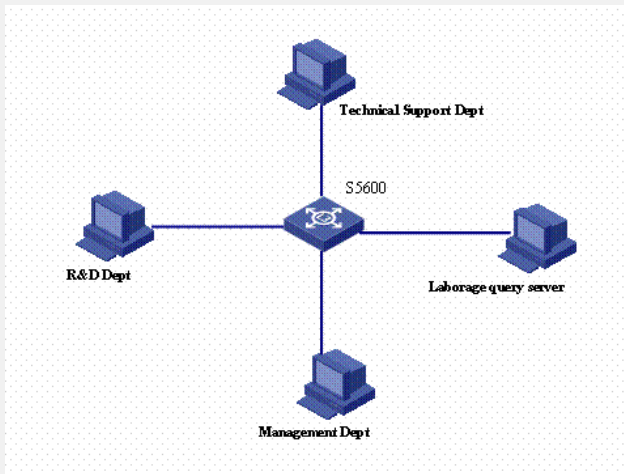


The configuration of traffic limit and line-rate on H3C S5600 switch

I Requirement for the diagram

1. Enterprise network's departments connect each other via GigabitEthernet ports of switch 5600. Management Dept access through the port of GigabitEthernet1/0/1, and Technical Support Dept access through the port of Gigabit Ethernet1/0/2, and R&D Dept access through the port of GigabitEthernet1/0/3, and laborage query server access through the port of GigabitEthernet1/0/4. The address of laborage query server is 129.110.1.2.
2. Version: release 1510.
3. When the other department accesses the laborage query server, the speed of traffic is less than 128kbps. The average speed of traffic which the laborage query server send out is less than 640kbps, and the packet priority will be changed 4, if the specification overstep.

II Network topology.



III Steps of configuration

The follow configuration only provide ACL command.

1. enter into advanced ACL system view
[H3C] acl number 3000
2. define the rule of the ACL
[H3C-acl-adv-3000] rule 1 permit ip source 129.110.1.2 0.0.0.0 destination any
3. enter into the GigabitEthernet1/0/4 port view
[H3C-acl-adv-3000]int GigabitEthernet1/0/4
4. The average speed of traffic which the laborage query server send out is less than 640kbps, and the packet priority will be changed 4, if the specification overstep.
[H3C-GigabitEthernet1/0/4] traffic-limit inbound ip-group 3000 640 exceed remark-ds cp 4
5. The speed at 128kbps between the port GigabitEthernet1/0/4 and laborage query server
[H3C-GigabitEthernet1/0/4] line-rate outbound 128

IV Key notes in the configuration

1. You must define the ACL first and then configure the traffic limit and the line-rate.
2. You must apply the ACL rule on the port after define the ACL.
3. The case is fit for H3C S3600, Quidway S3900, Quidway S5600.