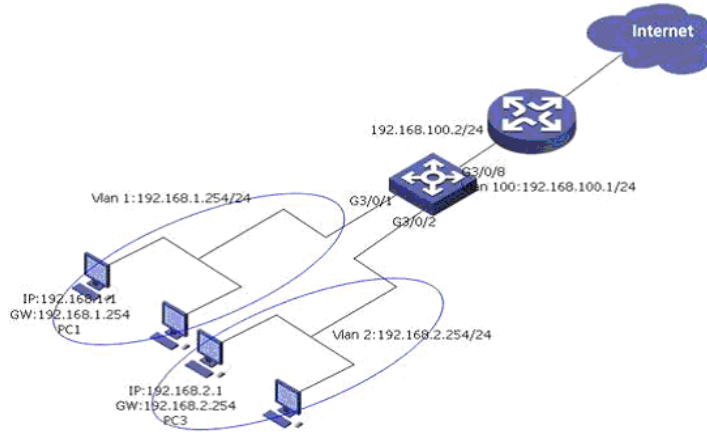


VLAN configuration on S7500 switch

I. Requirements

There are two VLANs on S7500 switch. All the hosts in both VLANs can access the Internet. And all the hosts in both VLANs can access each other.

II. Network Topology



III. Configuration steps

1. Create VLAN 2 and 100

```
[H3C S7500]vlan 2
[H3C S7500]vlan 100
```

Notes: VLAN 1 is the default VLAN. You need not set it manually.

2. Add ports to the VLANs

```
//Add the port G3/0/1 into VLAN 1
[H3C S7500]vlan 1
[H3C S7500-vlan1]port GigabitEthernet 3/0/1
//Add the port G3/0/2 into VLAN 2
[H3C S7500]vlan 2
[H3C S7500-vlan2]port GigabitEthernet 3/0/2
//Add the port G3/0/8 into vlan100
[H3C S7500]vlan 100
[H3C S7500-vlan100]port GigabitEthernet 3/0/8
```

3. Configure the IP address for the VLAN interfaces

```
[H3C S7500]interface Vlan-interface 1
[H3C S7500-Vlan-interface1]ip address 192.168.1.254 24
[H3C S7500]interface Vlan-interface 2
[H3C S7500-Vlan-interface2]ip address 192.168.2.254 24
[H3C S7500]interface Vlan-interface 100
[H3C S7500-Vlan-interface100]ip address 192.168.100.1 24
```

4. Configure the default route

```
[H3C S7500]ip route-static 0.0.0.0 0.0.0.0 192.168.100.2 preference 60
```

IV. Remark

1. The Gateway of the hosts in VLAN 1 and VLAN 2 should be set as the IP address of the VLAN interfaces on S7500.
2. On the router, the route to 192.168.1.0/24 and 192.168.2.0/24 should be added.