

使用日志主机收集设备debug信息方法

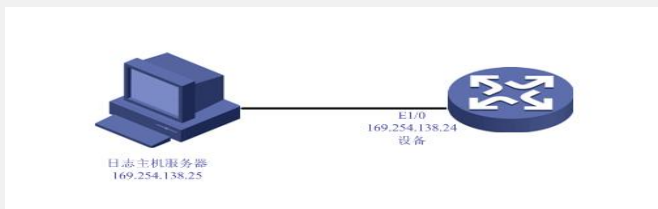
关键字: debug; 日志主机

一、组网需求:

在远程或者本地架设日志主机服务器收集设备DebugX信息。

设备清单: AR系列路由器1台, 日志主机

二、组网图:



三、配置步骤:

适用H3C设备

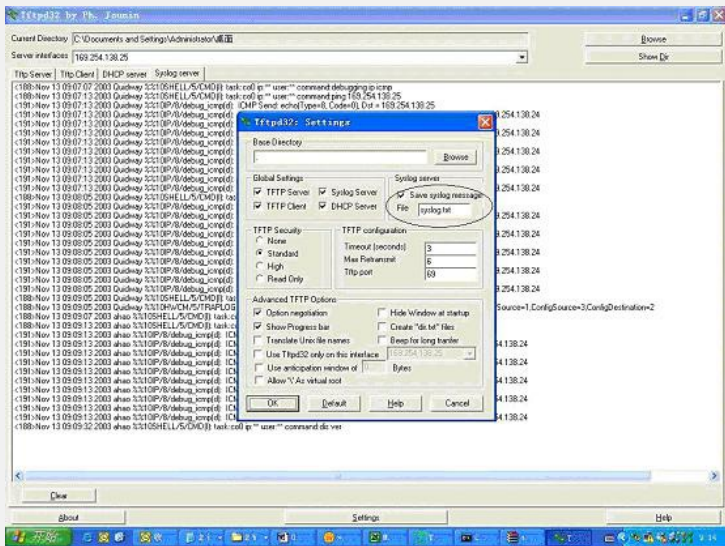
```

设备配置
#
sysname ahao
#
interface Ethernet1/0
ip address 169.254.138.24 255.0.0.0
#
//配置日志主机输出channel与日志主机地址
info-center source default channel 2 debug state on
info-center loghost 169.254.138.25
info-center timestamp debugging date
#

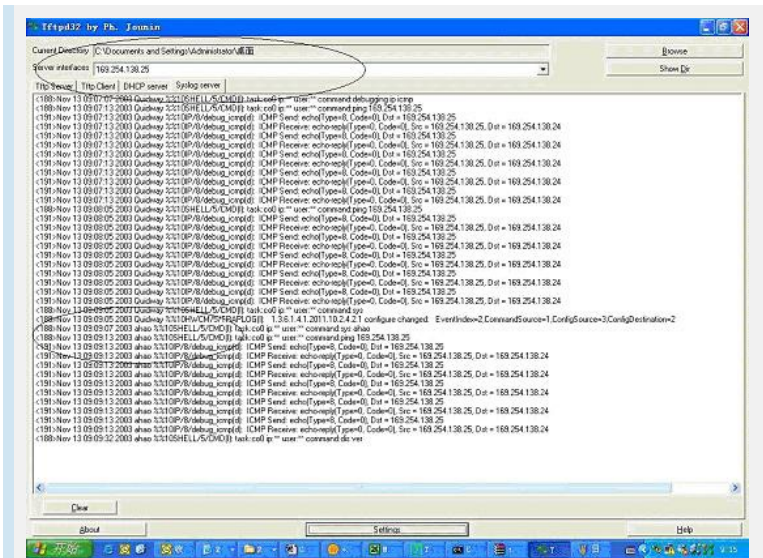
```

日志主机配置

1) 配置日志主机生成文件名称



2) 配置日志主机生成文件存放地址



四、操作步骤:

打开icmp的debug开关, 执行下面操作

```
[ahao]ping 169.254.138.25
```

```
PING 169.254.138.25: 56 data bytes, press CTRL_C to break
```

```
Reply from 169.254.138.25: bytes=56 Sequence=1 ttl=128 time=4 ms
```

```
Reply from 169.254.138.25: bytes=56 Sequence=2 ttl=128 time=4 ms
```

```
Reply from 169.254.138.25: bytes=56 Sequence=3 ttl=128 time=3 ms
```

```
Reply from 169.254.138.25: bytes=56 Sequence=4 ttl=128 time=3 ms
```

```
Reply from 169.254.138.25: bytes=56 Sequence=5 ttl=128 time=3 ms
```

在日志主机上可以看到下面Debug信息

```
Tue Nov 13 09:12:47 2007: <191>Nov 13 09:09:13 2003 ahao %10IP/8/debug_icmp(d): ICMP Send: echo(Type=8, Code=0), Dst = 169.254.138.25
```

五、使用注意事项:

1) 可以通过不同设备名称区分不同设备上上传到日志主机的debug信息

```
Tue Nov 13 09:11:38 2007: <191>Nov 13 09:08:05 2003 Quidway %10IP/8/debug_icmp(d): ICMP Send: echo(Type=8, Code=0), Dst = 169.254.138.25
```

```
Tue Nov 13 09:12:47 2007: <191>Nov 13 09:09:13 2003 ahao %10IP/8/debug_icmp(d): ICMP Send: echo(Type=8, Code=0), Dst = 169.254.138.25
```