

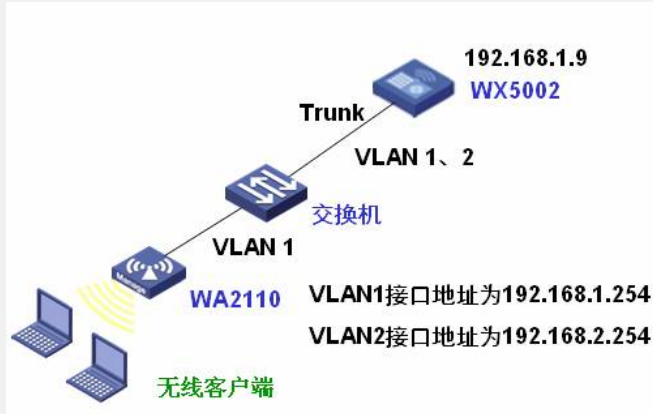
WX5002的二层隔离功能的典型配置

适用WX5002版本：Comware Software, Version 5.20, Release 1106P01

一、组网需求

WX5002、WA2110、H3C POE交换机、便携机（安装有11b/g无线网卡）

二、组网图



WX5002的IP地址为192.168.1.9。

WA2110属于VLAN1，无线客户端属于VLAN2，WX5002与交换机之间为Trunk，通过VLAN1、2。

交换机VLAN1、VLAN2的接口地址分别是192.168.1.254、192.168.2.254。

无线客户端的网关在交换机上，为192.168.2.254，在WX5002上启用二层隔离功能，隔离VLAN2，使得各个无线客户端之间无法相互访问，但都可访问网关192.168.2.254，网关MAC地址为00e0-fc78-c8ac。

SSID的名称为“H3C-user-isolaton”，WA2110序列号为210235A22W0079000212。

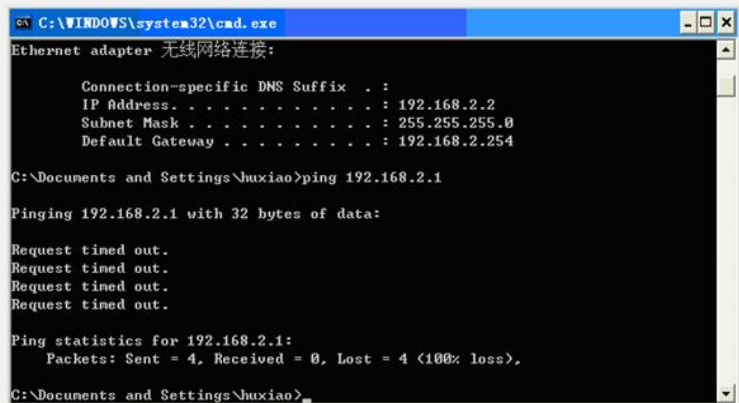
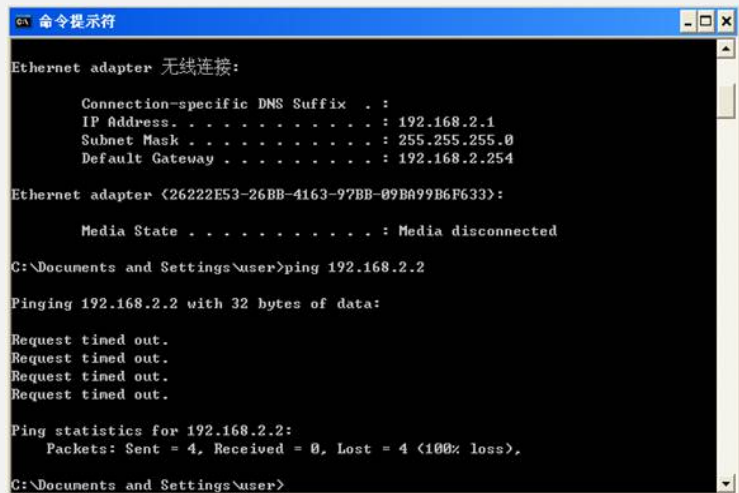
三、WX5002的配置

```
#  
version 5.20, Release 1106P01  
#  
sysname H3C  
#  
domain default enable system  
#  
user-isolation vlan 2 enable  
user-isolation vlan 2 permit-mac 00E0-FC78-C8AC  
#  
vlan 1  
#  
vlan 2  
#  
domain system  
access-limit disable  
state active  
idle-cut disable  
self-service-url disable  
#  
dhcp server ip-pool 1  
network 192.168.1.0 mask 255.255.255.0  
gateway-list 192.168.1.254  
expired day 3  
#  
dhcp server ip-pool 2  
network 192.168.2.0 mask 255.255.255.0  
gateway-list 192.168.2.254  
expired day 3
```

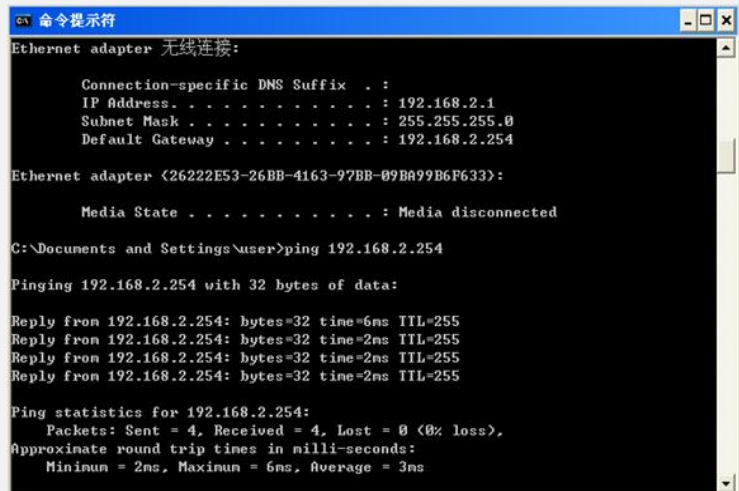
```
#
wlan rrm
dot11a mandatory-rate 6 12 24
dot11a supported-rate 9 18 36 48 54
dot11b mandatory-rate 1 2
dot11b supported-rate 5.5 11
dot11g mandatory-rate 1 2 5.5 11
dot11g supported-rate 6 9 12 18 24 36 48 54
#
wlan service-template 2 clear
ssid H3C-user-isolation
bind WLAN-ESS 2
authentication-method open-system
service-template enable
#
interface NULL0
#
interface Vlan-interface1
ip address 192.168.1.9 255.255.255.0
#
interface Vlan-interface2
ip address 192.168.2.9 255.255.255.0
#
interface GigabitEthernet1/0/1
port link-type trunk
port trunk permit vlan all
#
interface GigabitEthernet1/0/2
port link-type trunk
port trunk permit vlan all
#
interface M-Ethernet1/0/1
#
interface WLAN-ESS2
port access vlan 2
#
wlan ap ap1 model WA2100
serial-id 210235A22W0079000212
radio 1
service-template 2
radio enable
#
ip route-static 0.0.0.0 0.0.0.0 192.168.1.254
#
dhcp enable
#
user-interface aux 0
user-interface vty 0 4
#
return
```

四、验证结果

1、两台无线客户端都连接SSID“H3C-user-isolation”，分别获取地址192.168.2.1、192.168.2.2，都相互之间ping不通。



2、两台无线客户端都可ping通网关192.168.2.254



```
C:\WINDOWS\system32\cmd.exe
Ethernet adapter 无线网络连接:

    Connection-specific DNS Suffix  . :
    IP Address. . . . . : 192.168.2.2
    Subnet Mask . . . . . : 255.255.255.0
    Default Gateway . . . . . : 192.168.2.254

C:\Documents and Settings\huxiao>ping 192.168.2.254

Pinging 192.168.2.254 with 32 bytes of data:

Reply from 192.168.2.254: bytes=32 time=3ms TTL=255
Reply from 192.168.2.254: bytes=32 time=3ms TTL=255
Reply from 192.168.2.254: bytes=32 time=3ms TTL=255
Reply from 192.168.2.254: bytes=32 time=3ms TTL=255

Ping statistics for 192.168.2.254:
    Packets: Sent = 4, Received = 4, Lost = 0 (0% loss),
    Approximate round trip times in milli-seconds:
        Minimum = 3ms, Maximum = 3ms, Average = 3ms
```