

知 Aolynk DR814 add reserved mapping for ip camera

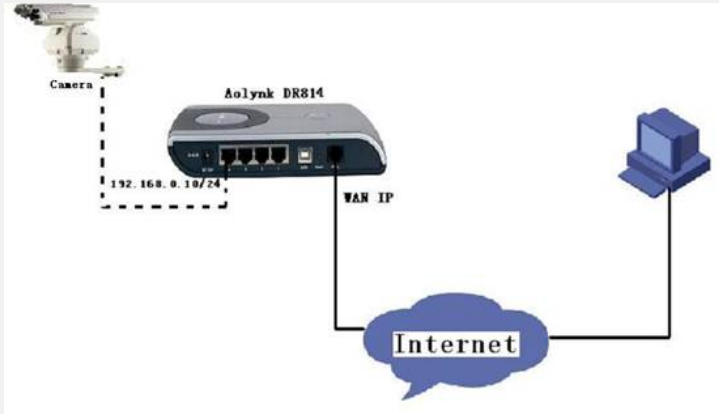
向健民 2008-09-04 发表

Aolynk DR814 add reserved mapping for ip camera

1. Customer requirements

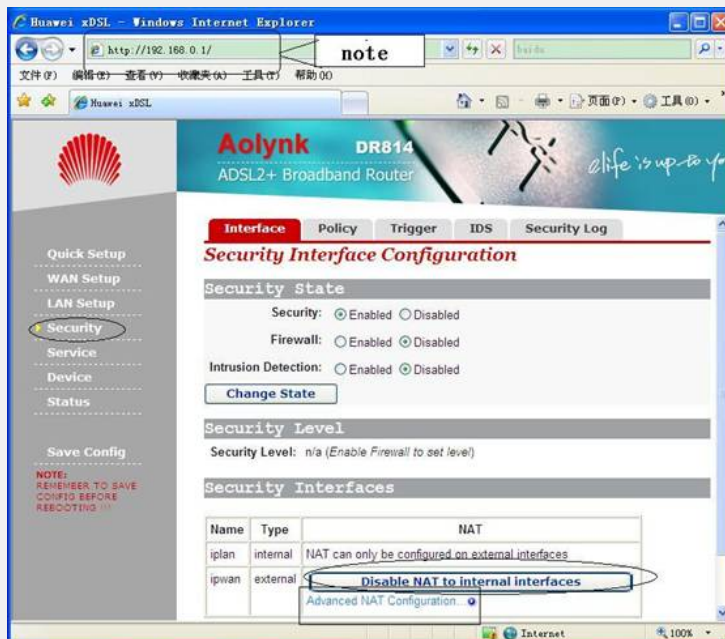
DR814 as the NAT gateway between the customer's intranet and the internet, the customer wants to control the camera connected the DR814 through the internet.

2. Topology



3. Step by step configuration guide

Step1 Find the security interface configuration page as below and Make sure NAT is enabled.



Step2 Then click Advanced NAT configuration...to enter the page as below



Step3 Click **Add Reserved Mapping...** to enter the page as below and fill in with camera address, Transport type and the port 80



Step4 Click **<Add Reserved Mapping>**... to enter the page as below .



Step5 Add another mapping filled with camera address, Transport type and the port 4321



Step6 Click **<Add Reserved Mapping>** after the configuration is complete.

Aolynk DR814
ADSL2+ Broadband Router

Global Address Pools

No Global Address Pools
[Add Global Address Pool](#)

Reserved Mappings

IP Addresses		Transport	External Port Range		Internal Port Range		
Global	Internal	Type	Start	End	Start	End	
Same as interface address	192.168.0.10	tcp	80	80	80	80	Delete
Same as interface address	192.168.0.10	tcp	4321	4321	4321	4321	Delete

[Add Reserved Mapping](#)

[Return to Interface List](#)

Save Config
 NOTE: REMEMBER TO SAVE CONFIG BEFORE REBOOTING !!!

Step7 Do remember to return to main interface to save the configuration.

Aolynk DR814
ADSL2+ Broadband Router

Save configuration

Save configuration

Confirm Save

You must save your new settings in order to make it effective the next time powered on.

There will be a delay while saving as configuration information is written to flash.

Copyright 2003

Save Config
 NOTE: REMEMBER TO SAVE CONFIG BEFORE REBOOTING !!!

4. Note

IN step 1, the default LAN port of DR814 had modified to 192.168.0.1, you should use 192.168.0.1 to enter the configuration page. And the camera address is 192.168.0.10, in other words, the default LAN port and the camera address you had set should in same net segment.