

知 H3C S5510 User ACL configure Guide to avoid ARP spoofing of the gateway y

赵国卫 2008-09-23 发表

H3C S5510 User ACL configure Guide to avoid ARP spoofing of the gateway

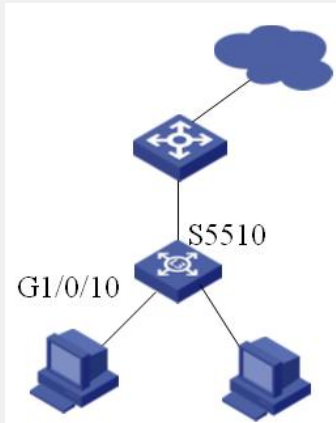
1. Customer requirements:

Device : 1 H3C S5510 , PC Client

Gateway IP: 10.1.1.1/24

The customer want to avoid the host send ARP spoofing of the gateway.

2. Topology:



3. Active Configurations:

(1) Undo the following :ndp,ntdp,habp,cluster,dot1x in global view

```
[s5510] undo ndp enable
```

```
[s5510] undo ntdp enable
```

```
[s5510] undo habp enable
```

```
[s5510] undo cluster enable
```

```
[s5510] undo dot1x
```

(2) Configure flow-template

```
[s5510] flow-template anti_arp extend start 28 4 l2 12 2
```

(3) Configure ACL

```
[s5510] acl number 5000
```

```
[s5510-acl-user-5000] rule 5 deny start 0A010101 ffffffff 28 l2 0806 ffff 12
```

(4) Configure classifier

```
[s5510] traffic classifier anti_arp operator and
```

```
[s5510-classifier-anti_arp] if-match acl 5000
```

(5) Configure behavior

```
[s5510] traffic behavior anti_arp
```

```
[s5510-behavior-anti_arp] filter deny
```

(6) Configure policy

```
[s5510] qos policy anti_arp
```

```
[s5510-qospolicy-anti_arp] classifier anti_arp behavior anti_arp
```

(7) Apply the flow-template and policy

```
[s5510] interface GigabitEthernet 1/0/10
```

```
[s5510-GigabitEthernet1/0/10] flow-template anti_arp
```

```
[s5510-GigabitEthernet1/0/10] qos apply policy anti_arp inbound
```

4. Some advice:

(1) The user ACL must use with the folw-template.

(2) There is only 2 flow-template can be configured.

(3) The same configure can be used for H3C S3610.