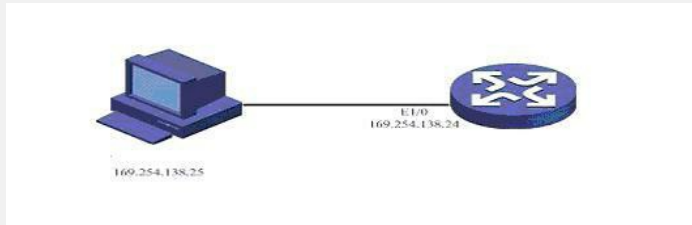


The method of using log host to collect device debug information

1.Requirements:

Set up log host to collect device DebugX information in local or remote place.

2.Network diagram:



3. Configuration steps:

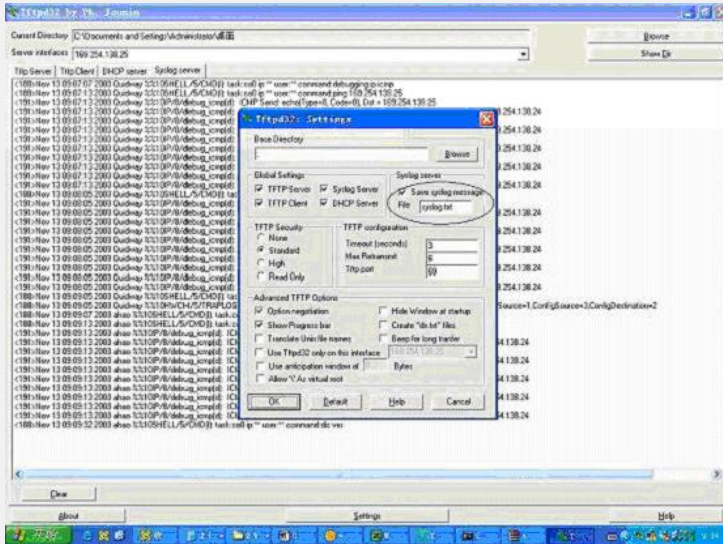
```

Device configuration
#
sysname ahao
#
interface Ethernet1/0
ip address 169.254.138.24 255.0.0.0
#
//configure loghost output channel and address
info-center source default channel 2 debug state on
info-center loghost 169.254.138.25
info-center timestamp debugging date
#

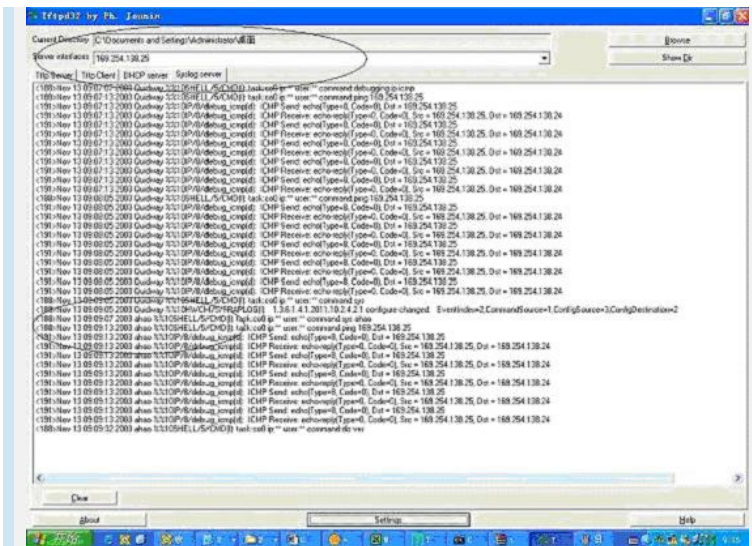
```

Log host configuration

1) Configure log host to generate file name



2) Configure log host to generate file path



Operations:

Enable icmp debug, and do blow operations

```
[ahao]ping 169.254.138.25
```

PING 169.254.138.25: 56 data bytes, press CTRL_C to break

Reply from 169.254.138.25: bytes=56 Sequence=1 ttl=128 time=4 ms

Reply from 169.254.138.25: bytes=56 Sequence=2 ttl=128 time=4 ms

Reply from 169.254.138.25: bytes=56 Sequence=3 ttl=128 time=3 ms

Reply from 169.254.138.25: bytes=56 Sequence=4 ttl=128 time=3 ms

Reply from 169.254.138.25: bytes=56 Sequence=5 ttl=128 time=3 ms

You can get blow Debug information at log host

```
Tue Nov 13 09:12:47 2007: <191>Nov 13 09:09:13 2003 ahao %%10IP/8/debug_icmp(d): ICMP Send: echo(Type=8, Code=0), Dst = 169.254.138.25
```

5. Notice

1) The log host debug information can be distinguished by device name

```
Tue Nov 13 09:11:38 2007: <191>Nov 13 09:08:05 2003 Quidway %%10IP/8/debug_icmp(d): ICMP Send: echo(Type=8, Code=0), Dst = 169.254.138.25
```

```
Tue Nov 13 09:12:47 2007: <191>Nov 13 09:09:13 2003 ahao %%10IP/8/debug_icmp(d): ICMP Send: echo(Type=8, Code=0), Dst = 169.254.138.25
```